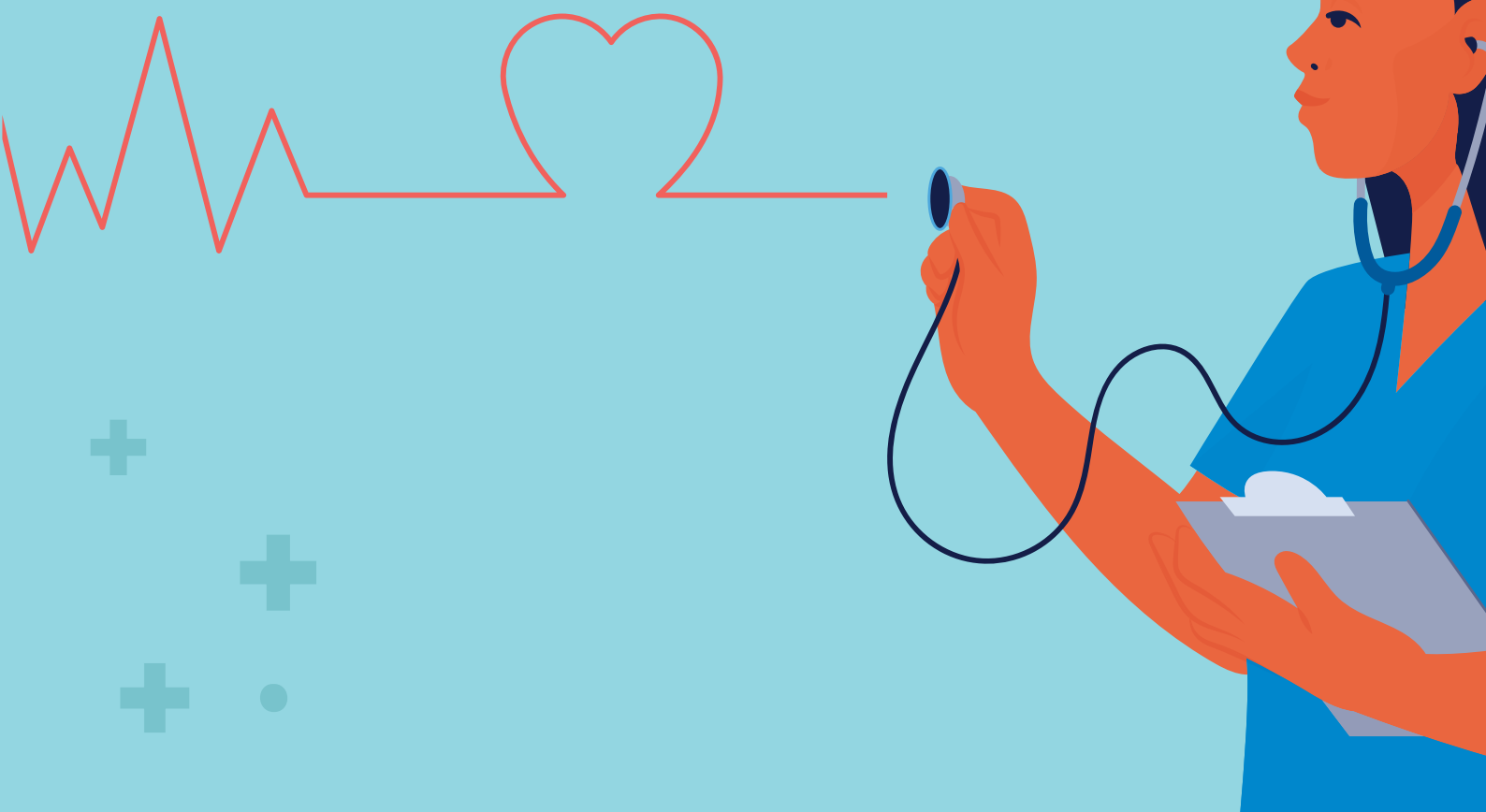


A study on employment and
working conditions of
**nurses in
private hospitals
in Delhi**



Employment and working conditions of nurses in private hospitals in Delhi: an exploratory study

ISBN 978-92-9020-972-0

© World Health Organization 2022

Some rights reserved. This work is available under the Creative Commons Attribution-NonCommercial-ShareAlike 3.0 IGO licence (CC BY-NC-SA 3.0 IGO; <https://creativecommons.org/licenses/by-nc-sa/3.0/igo>).

Under the terms of this licence, you may copy, redistribute and adapt the work for non-commercial purposes, provided the work is appropriately cited, as indicated below. In any use of this work, there should be no suggestion that WHO endorses any specific organization, products or services. The use of the WHO logo is not permitted. If you adapt the work, then you must license your work under the same or equivalent Creative Commons licence. If you create a translation of this work, you should add the following disclaimer along with the suggested citation: “This translation was not created by the World Health Organization (WHO). WHO is not responsible for the content or accuracy of this translation. The original English edition shall be the binding and authentic edition”.

Any mediation relating to disputes arising under the licence shall be conducted in accordance with the mediation rules of the World Intellectual Property Organization (<http://www.wipo.int/amc/en/mediation/rules/>).

Suggested citation. Employment and working conditions of nurses in private hospitals in Delhi: an exploratory study. New Delhi: World Health Organization, Country Office for India; 2022 Licence: CC BY-NC-SA 3.0 IGO.

Cataloguing-in-Publication (CIP) data. CIP data are available at <http://apps.who.int/iris>.

Sales, rights and licensing. To purchase WHO publications, see <http://apps.who.int/bookorders>. To submit requests for commercial use and queries on rights and licensing, see <http://www.who.int/about/licensing>.

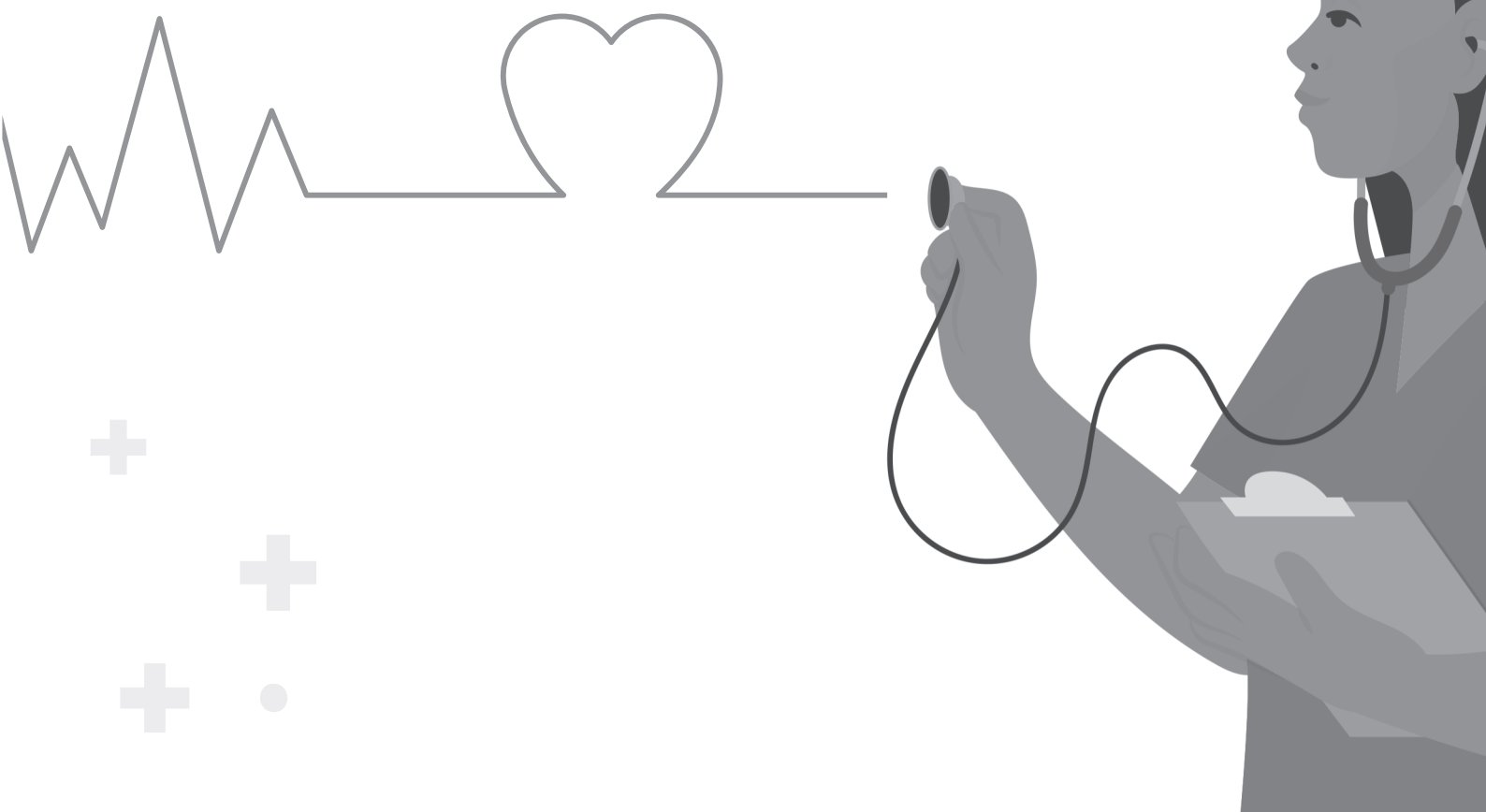
Third-party materials. If you wish to reuse material from this work that is attributed to a third party, such as tables, figures or images, it is your responsibility to determine whether permission is needed for that reuse and to obtain permission from the copyright holder. The risk of claims resulting from infringement of any third-party-owned component in the work rests solely with the user.

General disclaimers. The designations employed and the presentation of the material in this publication do not imply the expression of any opinion whatsoever on the part of WHO concerning the legal status of any country, territory, city or area or of its authorities, or concerning the delimitation of its frontiers or boundaries. Dotted and dashed lines on maps represent approximate border lines for which there may not yet be full agreement.

The mention of specific companies or of certain manufacturers' products does not imply that they are endorsed or recommended by WHO in preference to others of a similar nature that are not mentioned. Errors and omissions excepted, the names of proprietary products are distinguished by initial capital letters.

All reasonable precautions have been taken by WHO to verify the information contained in this publication. However, the published material is being distributed without warranty of any kind, either expressed or implied. The responsibility for the interpretation and use of the material lies with the reader. In no event shall WHO be liable for damages arising from its use.

A study on employment and
working conditions of
**nurses in
private hospitals
in Delhi**



Contents

| | |
|--|------------|
| Abbreviations | i |
| Acknowledgements | iii |
| Executive summary | iv |
| Section 1 | |
| 1.1: Background | 1 |
| 1.2: Literature review | 2 |
| 1.2.1: Size, composition, distribution, and nursing education | 2 |
| 1.2.2: Professional status, social professional discrimination | 4 |
| 1.2.3: Work and employment conditions | 4 |
| 1.2.4: Migration | 5 |
| 1.2.5: Collectivization in nursing profession | 6 |
| 1.2.6: Regulation of employment and working conditions of nurses | 7 |
| 1.2.7: Accreditation | 9 |
| Section 2 | |
| 2.1: Rationale and objectives | 11 |
| 2.2: Methodology | 12 |
| Section 3 Findings and discussion 1 | 16 |
| 3.1: Employment process and terms | 16 |
| 3.1.1: Recruitment process, associated documentation, and induction | 17 |
| 3.1.2: Terms of employment: remuneration, increments and promotions | 17 |
| 3.2: Working conditions | 24 |
| 3.2.1: Nurse patient ratio | 24 |
| 3.2.2: Workload, working hours, basic facilities at workplace | 25 |
| 3.2.3: Other employment benefits | 26 |
| 3.2.4: Harassment at workplace | 28 |
| 3.3: Occupational safety and health | 33 |
| 3.4: Gender issues | 34 |
| 3.5: Migration - international and national | 36 |
| Section 4 Findings and discussion 2 | 38 |
| 4.1: Grievance redressal | 38 |
| 4.2: Collectivization - unionization and challenges | 40 |
| 4.2.1: Unionization at the hospital level and barriers to the same | 40 |
| 4.2.2: Elusive social dialogue | 42 |
| 4.2.3: Collective momentum in private health care sector for regulation of working conditions | 43 |
| 4.3: Regulation of salary and working conditions | 44 |
| 4.3.1: Poor remuneration in private hospitals - interplay of policies, gender-changes in private health care sector- historical attitudes and practices | 44 |

| | |
|---|-----------|
| 4.3.2: Collective action translated to legal steps and more | 45 |
| 4 3.3: Adherence to regulation | 49 |
| 4.4: Accreditation and its impact | 52 |
| Section 5 Experiences during COVID-19 | 54 |
| Section 6 Conclusions and Recommendations | 63 |
| List of boxes | |
| List of tables | |
| Annexures | |
| References | |

Abbreviations

| | |
|---------------------|---|
| AIIMS | All India Institute of Medical Sciences |
| AHPI | Association of Health care Providers of India |
| ANMs | auxiliary nurse midwives |
| BSc | Bachelor of Science |
| CL | casual leave |
| CEO | chief executive officer |
| CNO | chief nursing officer |
| DHC | Delhi High Court |
| DNHRA | Delhi Nursing Homes Registration Act |
| DPNA | Delhi Private Nurses Association |
| DGHS | Directorate General of Health Services |
| EL | emergency leave |
| ESIS | Employees State Insurance Scheme |
| FGD | focused group discussion |
| GDA | general duty assistants |
| GNM | general nursing and midwifery |
| GNCTD | Government of National Capital Territory of Delhi |
| GCC | Gulf Cooperation Council |
| HOD | head of the department |
| HCW | health care workers |
| HIV | human immunodeficiency virus |
| HR | human resources |
| INC | Indian Nursing Council |
| IPNA | Indian Professional Nurses Association |
| IPC | infection prevention and control |
| IEC | information education communication |
| ICU | intensive care unit |
| ILO | International Labour Organization |
| JP Committee | Jagdish Prasad Committee |
| JCI | Joint Commission International |
| KI | key informants |
| MD | managing director |
| MSc | Master of Science |
| MLA | member of legislative assembly |
| MP | member of parliament |

| | |
|--------------|--|
| MWA | Minimum Wages Act |
| MoHFW | Ministry of Health & Family Welfare |
| NABH | National Accreditation Board for Hospitals and health care providers |
| NHRC | National Human Rights Commission |
| NSI | needle stick injury |
| NS | nurse superintendents |
| ND | nursing director |
| NRM | nursing resource management |
| OHS | occupational health and safety |
| OB | office bearers |
| OT | operation theatre |
| OECD | Organization for Economic Cooperation and Development |
| OPD | outpatient department |
| PPE | personal protective equipment |
| PDC | post-dated cheques |
| POSH | prevention of sexual harassment |
| PHC | primary health centres |
| PL | privilege leave |
| PF | provident fund |
| PHEIC | public health emergency of international concern |
| PHRS | Public Health Resource Society |
| QCI | Quality Council of India |
| RN | registered nurses |
| RTI | right to information |
| RCA | root cause analysis |
| SL | sick leave |
| SOP | standard operating procedures |
| SC | Supreme Court |

预览已结束，完整报告链接和二维码如下：

https://www.yunbaogao.cn/report/index/report?reportId=5_31928

