

WHEELCHAIR

SERVICE TRAINING OF TRAINERS PACKAGE

ToT Handbook

BASIC LEVEL



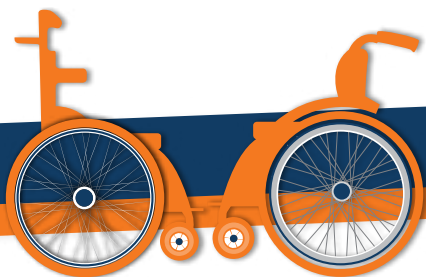
WHEELCHAIR

SERVICE TRAINING OF TRAINERS PACKAGE

ToT Handbook

BASIC LEVEL





Wheelchair service training of trainers package

Contents: Trainer's manual basic level – Trainer's manual intermediate level – Trainer's manual managers and stakeholders – ToT handbook basic level – ToT handbook intermediate level – ToT handbook managers and stakeholders
ISBN 978-92-4-151239-8

© World Health Organization 2017

Some rights reserved. This work is available under the Creative Commons Attribution-NonCommercial-ShareAlike 3.0 IGO licence (CC BY-NC-SA 3.0 IGO; <https://creativecommons.org/licenses/by-nc-sa/3.0/igo>).

Under the terms of this licence, you may copy, redistribute and adapt the work for non-commercial purposes, provided the work is appropriately cited, as indicated below. In any use of this work, there should be no suggestion that WHO endorses any specific organization, products or services. The use of the WHO logo is not permitted. If you adapt the work, then you must license your work under the same or equivalent Creative Commons licence. If you create a translation of this work, you should add the following disclaimer along with the suggested citation: "This translation was not created by the World Health Organization (WHO). WHO is not responsible for the content or accuracy of this translation. The original English edition shall be the binding and authentic edition".

Any mediation relating to disputes arising under the licence shall be conducted in accordance with the mediation rules of the World Intellectual Property Organization.

Suggested citation. Wheelchair service training of trainers package. Geneva: World Health Organization; 2017. Licence: CC BY-NC-SA 3.0 IGO.

Cataloguing-in-Publication (CIP) data. CIP data are available at <http://apps.who.int/iris>.

Sales, rights and licensing. To purchase WHO publications, see <http://apps.who.int/bookorders>. To submit requests for commercial use and queries on rights and licensing, see <http://www.who.int/about/licensing>.

Third-party materials. If you wish to reuse material from this work that is attributed to a third party, such as tables, figures or images, it is your responsibility to determine whether permission is needed for that reuse and to obtain permission from the copyright holder. The risk of claims resulting from infringement of any third-party-owned component in the work rests solely with the user.

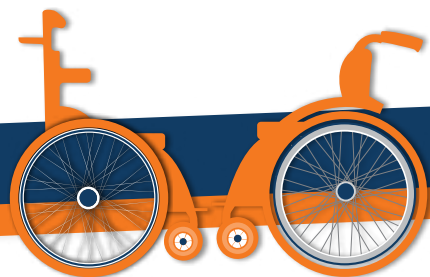
General disclaimers. The designations employed and the presentation of the material in this publication do not imply the expression of any opinion whatsoever on the part of WHO concerning the legal status of any country, territory, city or area or of its authorities, or concerning the delimitation of its frontiers or boundaries. Dotted and dashed lines on maps represent approximate border lines for which there may not yet be full agreement.

The mention of specific companies or of certain manufacturers' products does not imply that they are endorsed or recommended by WHO in preference to others of a similar nature that are not mentioned. Errors and omissions excepted, the names of proprietary products are distinguished by initial capital letters.

All reasonable precautions have been taken by WHO to verify the information contained in this publication. However, the published material is being distributed without warranty of any kind, either expressed or implied. The responsibility for the interpretation and use of the material lies with the reader. In no event shall WHO be liable for damages arising from its use.

Contributors:

Authors and editors:	Christine Cornick, Lauren Flaherty, Sarah Frost, Margaret Lamiell, Rob Mattingly, Ray Mines, Chris Rushman, Elsje Scheffler, Emma Tebbutt, Sylvia Vriesendorp, Kate Wilson
Peer reviewers:	Dave Calver, Silvana Contepomi, Vinicius Delgado Ramos, Sue Fry, Mary Goldberg, Norah Keitany, R. Lee Kirby, Katharina Kiss, Dan Mills, Kylie Mines, Gabriela Niță, Jamie Noon, Jon Pearlman, Cristina Pop, Denise Rodrigues Tsukimoto, Celia Stubbs, Andre Sugawara, Eric Wunderlich, Cheryl Ann Xavier
Copy editor:	Amanda Milligan
Photo credits:	Chapal Khasnabis and Jesse Moss
Video credits:	Global Goals Organization http://www.globalgoals.org/
Pilot trainees:	Deepti Ahuja, Ahmad Ali, Amalorpava Marie L., Nidia Johana Arias Becerra, Dinesh Balan, Bongani Bhebhe, Sneha Bhola, Rose Bongole, Sharmini Constantinescu, Fadi Daccache, Ferdiliza Dandah Garcia, Sonali R. Dalvi, Nirmala Danu, Vinicius Delgado Ramos, Shedrack T. Domingo, Amitabh Dwivedi, Kalanda Muwonge Emmanuel, Paulino Filosofo III, Mansoor Golra, Jenina Joy de Gucena, Yona E. Gyunda, Hikmat Hadoush, Omoding Herbert, Daudi S. Hilonga, Nan May Hnin Su, Chantheng Huoth, Erlis Iijazi, D. Vincent Jeyaraj, Kamalanathan P., Charles Kanyi, Kadir Kasim, Norah Keitany, James Keitany, Geoffrey Kimani, Peter Kiragu Kinyanjui, Kiran J., Katharina Kiss, Rungphet Kruanopparat, Anant Kumar, Mukesh Kumar, Rahul Kumar, Ramesh Kumar J., Ranjeet Kumar, T. Praveen Kumar, Xavier Lemire, Naw Cherry Lwin, Betty Maginifayi, Simbarashe Margaret Mapira, Martin, Nancy Mbugua, Peter McPherson Mchilima, Alexandria Miles, Ruth Mlay, Longini Basil Mtalo, Sara Munera Orozco, Yeti Raj Niraula, Seraphine Ongogo, Mohd Nor Fadly Osman, Ouma Ponplaus Agoro, Goretti Pala, Venu Gopal Pawar, Sunil Pokhrel, Cristina Pop, Uta Prehl, Puryoko, Dr. Rajalakshmi S.J., Salin Ruangsri, Christine C. Ruedas, Lameck Saka, Fred Semakula, Poutasi Seuseu, Vinakshi Singh, Song Sit, George Stefan, Govindasamy Sudhakar, Andre Sugawara, Elsie Taloafiri, Kanchana Thumpapong, Taukoriri Tibiriano, Maria Toro Hernandez, Piyawat Trevittaya, Christine Tusiime, Sanjay Kumar Verma, Tri Wibawa
Pilot trainers:	Dave Calver, Andrew Congdon, Christine Cornick, Nirmala Danu, Dietlind Gretschesel, Phatcharaporn Kongkerd, Rob Mattingly, Abdullah Munish, Isaac Nyathi, Vennila Palanivelu, Sama Raju, Nicky Seymour, Govindasamy Sudhakar, Sylvia Vriesendorp, Cheryl Ann Xavier
Pilot observers:	Christine Cornick, Lauren Flaherty, Sarah Frost, Sue Fry, Krithika Kandavel, Megan Kearns, Margaret Lamiell, Rob Mattingly, Sara Munera Orozco, Elsje Scheffler, Emma Tebbutt, Sylvia Vriesendorp
Partner organizations:	Association for the Physically Disabled of Kenya (APDK), International Society of Wheelchair Professionals, Latter-day Saint Charities, Leadership, Management, and Governance Project, Mobility India, Motivation Australia, Motivation Charitable Trust, Motivation Romania Foundation, Physical and Rehabilitation Medicine Institute of the University of Sao Paulo Medical School General Hospital, Sirindhorn National Medical Rehabilitation Institute, UCP/Wheels for Humanity, University of Pittsburgh, Western Cape Rehabilitation Centre, World Vision
Financial support:	US Agency for International Development



Terminology

The following terms used throughout the WSTPtot are defined below.

ToT trainer	Person delivering the WSTPtot
Trainees	All participants attending the WSTPtot
Lead trainees	Trainees leading the delivery of an assigned WSTPb/i/m/s session
Support trainees	Trainees assigned to support the lead trainee in specific WSTPb/i/m/s sessions
ToT participants	Trainees who are in the role of the WSTPb/i/m/s participants during practice delivery sessions
Participants	People who are attending the WSTPb/i/m/s
ToT Handbook	Combined reference manual and workbook for ToT trainees

Acronyms

The following acronyms used throughout the WSTPtot are defined below.

ASIS	Anterior superior iliac spine
AV equipment	Audio-visual equipment
CBR	Community-Based Rehabilitation
CRPD	United Nations Convention on the Rights of Persons with Disabilities
DPO	Disabled People's Organization
INGO	International Non-governmental Organization
ISO standards	International Organization for Standardization standards
ISPO	International Society of Prosthetics and Orthotics
ISWP	International Society of Wheelchair Professionals
ITs	Ischial tuberosities (seat bones)
NGO	Non-governmental Organization
OPD	Organization of Persons/People with Disabilities
PPT/s	PowerPoint Presentation/s or slides
PSD	Postural Support Device
PSIS	Posterior superior iliac spine
PWDs	Persons with disabilities
SDGs	Sustainable Development Goals
ToT	Training of Trainers
USAID	United States Agency for International Development
WHO	World Health Organization

WSTP	Wheelchair Service Training Package
WSTP_b	Wheelchair Service Training Package – Basic Level
WSTP_i	Wheelchair Service Training Package – Intermediate Level
WSTP_m	Wheelchair Service Training Package for Managers
WSTP_s	Wheelchair Service Training Package for Stakeholders
WSTP_{tot}	Wheelchair Service Training of Trainers Package

CONTENTS

x	About the Wheelchair Service Training of Trainers Package
xiii	Guidelines for preparing practice delivery sessions
I	Core training skills module
2	ToT.1 Introduction to the Wheelchair Service Training of Trainers Package (WSTPtot)
3	ToT.2 Wheelchair service training packages
10	ToT.3 Practice delivery sessions
15	ToT.4 Preparing for diversity
20	ToT.5 Adult learning
27	ToT.6 Preparation time
28	ToT.7 Presenting and facilitating
33	ToT.8 Communication skills
37	ToT.9 Knowledge of guiding documents
55	ToT.10 Audio-visual tools and equipment
61	ToT.11 Feedback
63	ToT.12 Managing group dynamics
68	Basic Level module
69	A.1: Wheelchair users
70	A.2: Wheelchair services
71	A.3: Wheelchair mobility
75	A.4: Sitting upright
77	A.5: Pressure sores

预览已结束，完整报告链接和二维码如下：

https://www.yunbaogao.cn/report/index/report?reportId=5_26590

