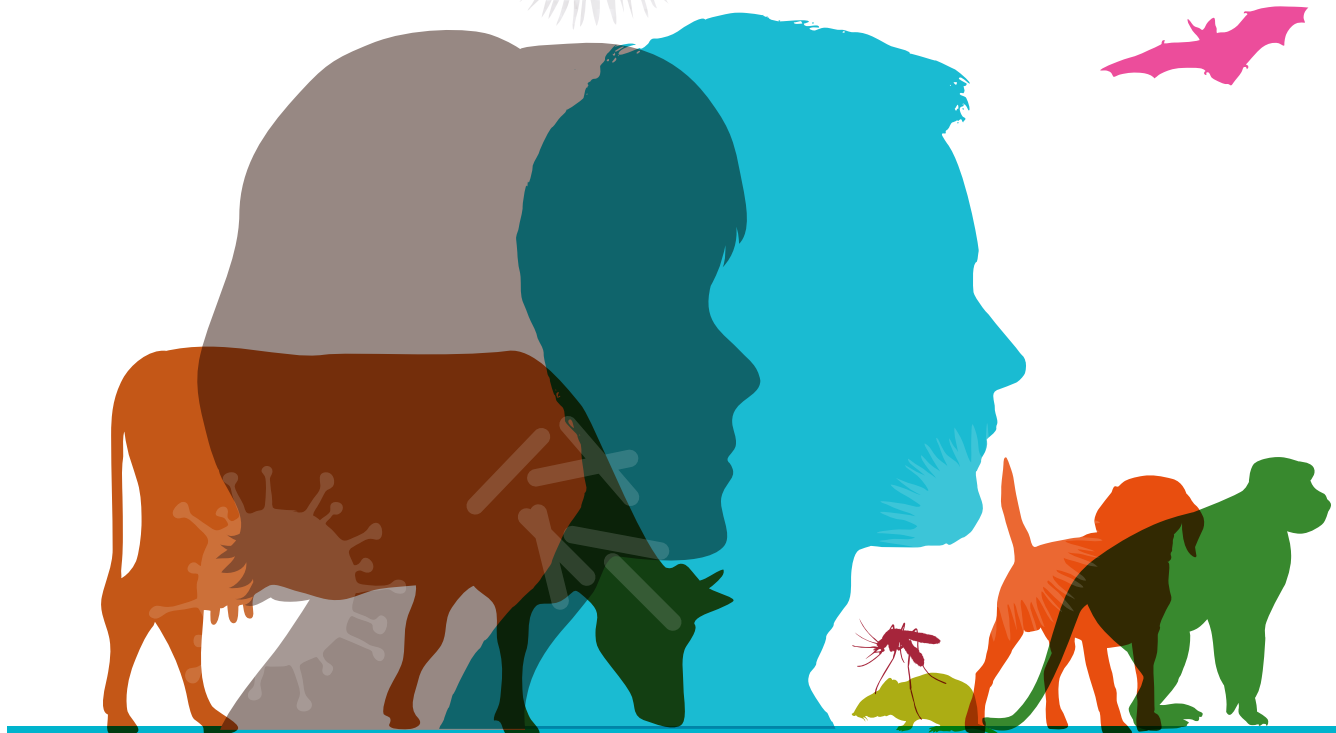
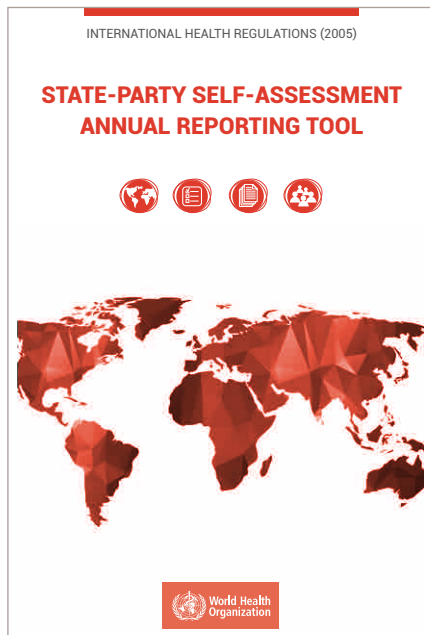


# HANDBOOK

FOR THE INTEGRATION OF THE WORLD  
ORGANISATION FOR ANIMAL HEALTH PERFORMANCE  
OF VETERINARY SERVICES RESULTS INTO  
THE WHO STATE-PARTY SELF-ASSESSMENT ANNUAL  
REPORTING PROCESS



World Health  
Organization

Oie

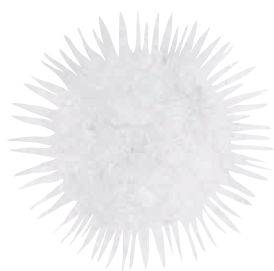
WORLD ORGANISATION  
FOR ANIMAL HEALTH





# HANDBOOK

FOR THE INTEGRATION OF THE WORLD  
ORGANISATION FOR ANIMAL HEALTH PERFORMANCE  
OF VETERINARY SERVICES RESULTS INTO  
THE WHO STATE-PARTY SELF-ASSESSMENT ANNUAL  
REPORTING PROCESS



Handbook for the integration of the World Organisation for Animal Health Performance of Veterinary Services results into the WHO State-Party Self-Assessment Annual Reporting process  
ISBN 978-92-4-151529-0

© **World Health Organization 2018**

Some rights reserved. This work is available under the Creative Commons Attribution-NonCommercial-ShareAlike 3.0 IGO licence (CC BY-NC-SA 3.0 IGO; <https://creativecommons.org/licenses/by-nc-sa/3.0/igo>).

Under the terms of this licence, you may copy, redistribute and adapt the work for non-commercial purposes, provided the work is appropriately cited, as indicated below. In any use of this work, there should be no suggestion that WHO endorses any specific organization, products or services. The use of the WHO logo is not permitted. If you adapt the work, then you must license your work under the same or equivalent Creative Commons licence. If you create a translation of this work, you should add the following disclaimer along with the suggested citation: "This translation was not created by the World Health Organization (WHO). WHO is not responsible for the content or accuracy of this translation. The original English edition shall be the binding and authentic edition".

Any mediation relating to disputes arising under the licence shall be conducted in accordance with the mediation rules of the World Intellectual Property Organization.

**Suggested citation.** Handbook for the integration of the World Organisation for Animal Health Performance of Veterinary Services results into the WHO State Parties Self-Assessment Annual Reporting process. Geneva: World Health Organization; 2018. Licence: CC BY-NC-SA 3.0 IGO.

**Cataloguing-in-Publication (CIP) data.** CIP data are available at <http://apps.who.int/iris>.

**Sales, rights and licensing.** To purchase WHO publications, see <http://apps.who.int/bookorders>. To submit requests for commercial use and queries on rights and licensing, see <http://www.who.int/about/licensing>.

**Third-party materials.** If you wish to reuse material from this work that is attributed to a third party, such as tables, figures or images, it is your responsibility to determine whether permission is needed for that reuse and to obtain permission from the copyright holder. The risk of claims resulting from infringement of any third-party-owned component in the work rests solely with the user.

**General disclaimers.** The designations employed and the presentation of the material in this publication do not imply the expression of any opinion whatsoever on the part of WHO concerning the legal status of any country, territory, city or area or of its authorities, or concerning the delimitation of its frontiers or boundaries. Dotted and dashed lines on maps represent approximate border lines for which there may not yet be full agreement.

The mention of specific companies or of certain manufacturers' products does not imply that they are endorsed or recommended by WHO in preference to others of a similar nature that are not mentioned. Errors and omissions expected, the names of proprietary products are distinguished by initial capital letters.

All reasonable precautions have been taken by WHO to verify the information contained in this publication. However, the published material is being distributed without warranty of any kind, either expressed or implied. The responsibility for the interpretation and use of the material lies with the reader. In no event shall WHO be liable for damages arising from its use.

# CONTENTS

ACKNOWLEDGEMENT	6
CONTEXT	7
OBJECTIVE OF THE HANDBOOK	8
CONTENT OF THE HANDBOOK	9
TABLE OF CORRESPONDENCE BETWEEN THE CAPACITIES IN THE SPAR TOOL AND THE CRITICAL COMPETENCIES IN THE OIE PVS TOOL	10
CAPACITIES IN THE STATE PARTY SELF-ASSESSMENT ANNUAL REPORTING TOOL AND ASSOCIATED CRITICAL COMPETENCIES IN THE OIE PVS EVALUATION REPORTS	11
C1. LEGISLATION AND FINANCING	12
C2. IHR COORDINATION AND NATIONAL IHR FOCAL POINT FUNCTIONS	14
C3. ZOO NOTIC EVENTS AND THE HUMAN-ANIMAL INTERFACE	16
C4. FOOD SAFETY	18
C5. LABORATORY	21
C6. SURVEILLANCE	23
C7. HUMAN RESSOURCES	25
C8. NATIONAL HEALTH EMERGENCY FRAMEWORK	27
C9. HEALTH SERVICE PROVISION	29
C10. RISK COMMUNICATION	30
C11. POINTS OF ENTRY	31
C12. CHEMICAL EVENTS	31
C13. RADIATION EMERGENCIES	31
ANNEX 1. KEY OBLIGATIONS ASSOCIATED WITH THE IHR (2005) FOR WHICH THE VETERINARY SERVICES CONTRIBUTE	32
ANNEX 2. LIST OF PVS CRITICAL COMPETENCIES OF INTEREST FOR THE SPAR	33
ANNEX 3. DESCRIPTION OF THE OIE PVS PATHWAY	34

## ACKNOWLEDGEMENT

WHO and the OIE would like to acknowledge with thanks all the experts who contributed to the development and review of this handbook, more specifically Guillaume Belot, Maud Carron, François Caya, Stella Chungong, Stéphane de la Rocque, Rajesh Sreedharan and Emily Tagliaro.

## CONTEXT

With the coming into force of the revised International Health Regulations (IHR (2005)), all States Parties are required to assess the ability of their national structure and resources to meet minimum national core capacities for surveillance and response, and to develop a plan of action to ensure that these capacities be present and functioning throughout their territories.

Annex 1 of the IHR (2005) provides a list of core capacities – the capacity to detect, report, assess and respond to Public Health Events of International Concern (PHEIC) – expected at the three levels of implementation in countries – central, intermediate and community levels. All States Parties have committed to report their level of compliance with IHR Annex 1 to the World Health Assembly (WHA) on a yearly basis.

In order to assist States Parties in their assessment in fulfilling their reporting obligations, WHO developed the States Parties Self-Assessment Annual Reporting tool (SPAR). The tool covers 13 capacities, as the results of the interpretation of the requirements in Annex 1A and 1B of the IHR (2005). For each capacity, one to three indicators are used to measure the country's progress towards fully developed and functional IHR capacities. Indicators are further broken down to activities which define the indicator on a 5 levels scale of performance. For each indicator, the reporting country (in practice, the IHR National Focal Point (IHR NFP)) selects which of the five levels best describes the country's current point on the continuum of progress. The information obtained through the SPAR tool is sent to the WHO Secretariat which summarize the results in a report of the Director-General to WHO governing bodies. Results are also published on the WHO Global Health Observatory<sup>1</sup>.

When it comes to the specific contribution from Veterinary Authorities in reaching the objectives of the IHR (2005), the OIE's Performance of Veterinary Services (PVS) Pathway assesses the performance of the national Veterinary Services and their compliance with OIE international standards on the quality of Veterinary Services. All aspects relevant to the OIE Terrestrial Animal Health Code and the quality of Veterinary Services, as per OIE definition<sup>2</sup>, are reviewed using the PVS Tool. The PVS Expert Team collects and analyses baseline information against 47 Critical Competencies, each of which are described in a specific card (Critical Competency Card). More details on the PVS Pathway can be found in Annex 3 of this handbook.

Note: The 6<sup>th</sup> Edition (2013) of the OIE PVS Tool is used in this handbook. A 7<sup>th</sup> Edition of the PVS Tool will come into force in 2019. Since the PVS Evaluation reports of most countries were based on the 2013 edition of the PVS Tool until 2018, changes to the Tool will only be reflected in a subsequent version of this handbook.

*" Each State Party shall develop, strengthen and maintain, as soon as possible but no later than five years from the entry into force of these Regulations (...), the capacity to detect, assess, notify and report events in accordance with these Regulations... and ...the capacity to respond promptly and effectively... "*

*IHR (2005), Articles 5 and 13*

1 - WHO. Global Health Observatory – International Health Regulations <http://www.who.int/gho/ihr/en/> (accessed on 20 November 2018)

2 - In this manual, the terms "Veterinary Authorities" and "Veterinary Services" refer to the definitions in the OIE Code

- Veterinary Authority means the governmental authority, comprising veterinarian, other professionals and paraprofessionals, having the responsibility and competence for ensuring or supervising the implementation of animal health and welfare measures, international veterinary certification and other standards and recommendations in the OIE terrestrial Code in the whole territory.

- "Veterinary Services" means the governmental and non-governmental organisations that implement animal health and welfare measures and other standards and recommendations in the Code in the territory. The veterinary Services are under the overall control and direction of the Veterinary Authority. Private sector organisations, veterinarians, veterinary paraprofessionals are normally accredited or approved by the Veterinary Authority to deliver the delegated functions.

## OBJECTIVE OF THE HANDBOOK

The objective of the Handbook is to facilitate the work of the IHR NFP in assessing and reporting through the SPAR tool by enlightening in which and how the Veterinary Services contribute to the capacities covered by the tool.

These contributions are obvious for some of them (e.g. zoonoses, food safety), but others should also be considered for a more thorough and holistic review of strengths and gaps. This Handbook has been developed to facilitate this exercise; it explains how to use the data contained in an OIE PVS Evaluation report to assist in the use of the SPAR tool.

预览已结束，完整报告链接和二维码如下：

[https://www.yunbaogao.cn/report/index/report?reportId=5\\_25705](https://www.yunbaogao.cn/report/index/report?reportId=5_25705)

