



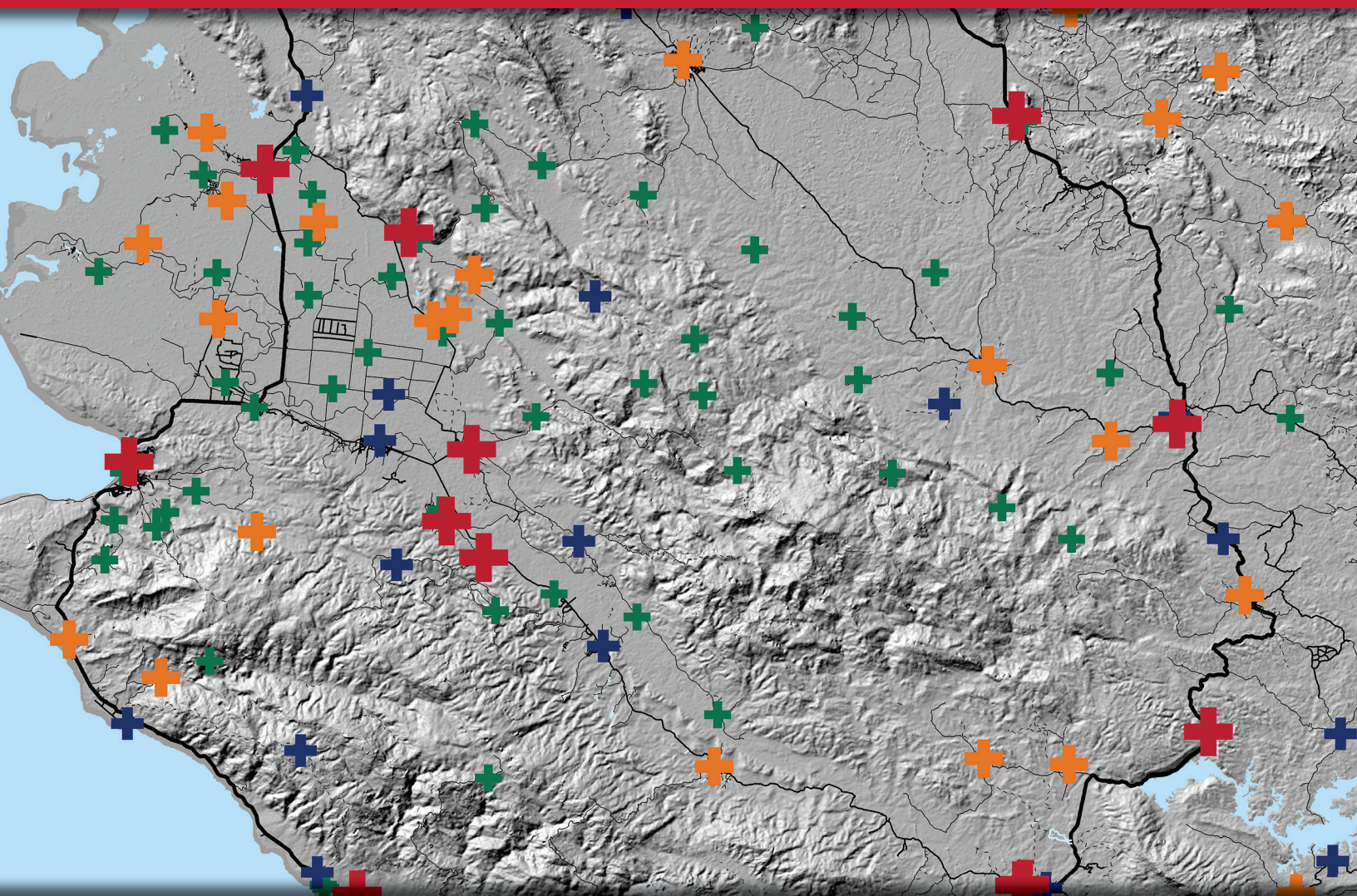
USAID
FROM THE AMERICAN PEOPLE



World Health Organization

MASTER FACILITY LIST RESOURCE PACKAGE:

Guidance for countries wanting to strengthen their MFL



January 2018

MASTER FACILITY LIST RESOURCE PACKAGE

Guidance for countries wanting to strengthen their MFL

FACILITATOR GUIDE FOR THE MFL TRAINING

January 2018



USAID
FROM THE AMERICAN PEOPLE



**World Health
Organization**

Master Facility List Resource Package: guidance for countries wanting to strengthen their Master Facility List
ISBN 978-92-4-151330-2

© World Health Organization 2018

Some rights reserved. This work is available under the Creative Commons Attribution-NonCommercial-ShareAlike 3.0 IGO licence (CC BY-NC-SA 3.0 IGO; <https://creativecommons.org/licenses/by-nc-sa/3.0/igo>).

Under the terms of this licence, you may copy, redistribute and adapt the work for non-commercial purposes, provided the work is appropriately cited, as indicated below. In any use of this work, there should be no suggestion that WHO endorses any specific organization, products or services. The use of the WHO logo is not permitted. If you adapt the work, then you must license your work under the same or equivalent Creative Commons licence. If you create a translation of this work, you should add the following disclaimer along with the suggested citation: “This translation was not created by the World Health Organization (WHO). WHO is not responsible for the content or accuracy of this translation. The original English edition shall be the binding and authentic edition”.

Any mediation relating to disputes arising under the licence shall be conducted in accordance with the mediation rules of the World Intellectual Property Organization.

Suggested citation. Master Facility List Resource Package: guidance for countries wanting to strengthen their Master Facility List. Geneva: World Health Organization; 2017. Licence: CC BY-NC-SA 3.0 IGO.

Cataloguing-in-Publication (CIP) data. CIP data are available at <http://apps.who.int/iris>.

Sales, rights and licensing. To purchase WHO publications, see <http://apps.who.int/bookorders>. To submit requests for commercial use and queries on rights and licensing, see <http://www.who.int/about/licensing>.

Third-party materials. If you wish to reuse material from this work that is attributed to a third party, such as tables, figures or images, it is your responsibility to determine whether permission is needed for that reuse and to obtain permission from the copyright holder. The risk of claims resulting from infringement of any third-party-owned component in the work rests solely with the user.

General disclaimers. The designations employed and the presentation of the material in this publication do not imply the expression of any opinion whatsoever on the part of WHO concerning the legal status of any country, territory, city or area or of its authorities, or concerning the delimitation of its frontiers or boundaries. Dotted and dashed lines on maps represent approximate border lines for which there may not yet be full agreement.

The mention of specific companies or of certain manufacturers’ products does not imply that they are endorsed or recommended by WHO in preference to others of a similar nature that are not mentioned. Errors and omissions excepted, the names of proprietary products are distinguished by initial capital letters.

All reasonable precautions have been taken by WHO to verify the information contained in this publication. However, the published material is being distributed without warranty of any kind, either expressed or implied. The responsibility for the interpretation and use of the material lies with the reader. In no event shall WHO be liable for damages arising from its use.

CONTENTS

OVERVIEW OF THE MFL RESOURCE PACKAGE.....	vii
---	-----

ACKNOWLEDGEMENTS	ix
------------------------	----

1	INTRODUCTION TO THE MFL.....	1
1.	WHAT DO WE MEAN BY “MASTER FACILITY LIST”?	2
2.	VALUE OF AN MFL	2
3.	CHARACTERISTICS OF A FUNCTIONAL MFL.....	5
4.	ELEMENTS OF A FUNCTIONAL MFL	6
5.	MFL DEVELOPMENT SPECTRUM	6
6.	USING THE RESOURCE PACKAGE	7
2	MFL ASSESSMENT	9
1.	WHAT DO WE MEAN BY “MFL ASSESSMENT”?	10
2.	WHY UNDERTAKE AN MFL ASSESSMENT?	11
3.	AREAS OF FOCUS FOR AN ASSESSMENT	12
3.1	Stakeholders.....	12
3.2	Existing Facility Lists.....	14
3.3	Facility Registry Service: Software and Supporting Infrastructure	17
3.4	Policy Environment	18
3.5	Governance	19
3.6	Human Resources	20
3.7	Financial Resources	21
4.	IMPLEMENTING THE ASSESSMENT	22
4.1	Who Should be Involved	22
4.2	Resources and Timelines.....	22
4.3	Data Collection Tool	23
5.	CHALLENGES.....	24
3	KEY CONSIDERATIONS FOR THE MFL	25
1.	WHAT DO WE MEAN BY “MFL KEY CONSIDERATIONS?”	26
2.	WHAT ARE THE MFL KEY CONSIDERATIONS?.....	26
2.1	Who is Leading the MFL Development Process?.....	26
2.2	What is the Purpose of the MFL?.....	27
2.3	Where Will the MFL Institutional Home be Located?.....	28

2.4	What Types of Health Facilities Will be Included in the MFL?	30
2.5	What Type of Software Tool Will be Used for the MFL?	31
2.6	What are the workflows for the MFL?	32
3.	RESOURCES.....	33
4	MFL GOVERNANCE.....	35
1.	WHAT DO WE MEAN BY “GOVERNANCE”?	36
2.	WHY IS GOVERNANCE IMPORTANT?	36
3.	KEY ELEMENTS OF GOVERNANCE.....	37
3.1	Leadership	37
3.2	Stakeholder Engagement.....	41
3.3.	Policy Environment	45
3.4	Institutionalization and Sustainability.....	46
4.	CHALLENGES.....	48
5.	RESOURCES.....	49
5	MFL DATA CONTENT	51
1.	WHAT DO WE MEAN BY “MFL DATA CONTENT”?	52
2.	DECIDING THE MFL DATA CONTENT.....	52
3.	KEY ASPECTS OF MFL DATA CONTENT.....	54
3.1	Signature Domain Data.....	54
3.2	Service Domain Data	59
3.3	Data Specifications.....	60
4.	RESOURCES.....	63
6	GEOGRAPHIC COORDINATES IN THE MFL.....	65
1.	WHAT DO WE MEAN BY “ASSIGNING GEOGRAPHIC COORDINATES TO THE MFL”?	66
2.	WHY ARE GEOGRAPHIC COORDINATES IMPORTANT IN THE MFL?.....	67
3.	GEOGRAPHIC COORDINATES IN THE MFL: STEPS FOR IMPLEMENTATION.....	68
3.1	Define the Geographic Schema to Be Used	68
3.2	Define the Level of Accuracy Required	69
3.3	Select the Persons Responsible for the Geographic Coordinates.....	70
3.4	Decide What Data Sources Will be Used to Obtain the Geographic Coordinates.....	71
3.5	Conduct Primary Data Collection	72
3.6	Validate Geographic Coordinates through Site Visits.....	76
3.7	Maintain the Geographic Coordinates in the MFL	76
3.8	Decide How Widely to Share the Geographic Coordinates	77

7	ESTABLISHING AN MFL DATASET.....	79
1.	WHAT DO WE MEAN BY “ESTABLISHING AN MFL DATASET”?.....	80
2.	KEY STEPS IN ESTABLISHING THE MFL DATASET.....	81
2.1	Determine What Data the MFL Will Contain	81
2.2	Identify Available Facility Lists and Assess Their Content	81
2.3	Identify a Good List to Serve as a Starting Point.....	81
2.4	Address Gaps in Data.....	83
2.5	Collect New Data	84
2.6	Harmonize Lists into a Single List.....	86
2.7	Validate Data for Each Facility.....	88
3.	GOVERNANCE ISSUES TO CONSIDER.....	89
4.	CHALLENGES.....	89
5.	RESOURCES.....	90
8	ESTABLISHING A FACILITY REGISTRY SERVICE.....	91
1.	WHAT IS A FACILITY REGISTRY SERVICE?	92
2.	STEPS IN ESTABLISHING THE FACILITY REGISTRY SERVICE	93
2.1	Establish a Technical Working Group	93
2.2	Determine and Prioritize Facility Registry Service Requirements.....	93
2.3	Select a Software Solution.....	95
2.4	Configure Facility Registry Service	97
2.5	Arrange for Hosting of Facility Registry Service.....	98
3.	LAUNCH – ITERATE – GROW.....	99
3.1	Launch Facility Registry Service.....	99
3.2	Stay Agile and Prioritize	99
3.3	Support and Grow	99
3.4	Document What You Do.....	100
4.	CHALLENGES.....	100
5.	RESOURCES.....	101
9	MAINTAINING THE MFL.....	103
1.	WHAT DO WE MEAN BY “MAINTAINING THE MFL”?	104
2.	WHY IS MAINTAINING THE MFL IMPORTANT?.....	105
3.	KEY ASPECTS OF MAINTAINING AN MFL	105
3.1	Management of the Content of the MFL	105
3.2	Maintaining the Facility Registry Service.....	114
3.3	Management of Administrative Issues	115
4.	CHALLENGES.....	120

5.	RESOURCES.....	121
10	SHARING THE MFL	123
1.	WHAT DO WE MEAN BY “SHARING THE MFL”?	124
2.	WHY IS SHARING THE MFL IMPORTANT?	125
3.	KEY ASPECTS OF MFL DATA SHARING.....	125
3.1	Develop a Data Sharing Policy.....	125
3.2	Prepare Documentation for Data Consumers.....	128
3.3	How to Share the Data	129
4.	CONSIDERATIONS FOR INTEGRATION OF THE MFL.....	129
4.1	What is Integration?	130
4.2	Goals and Objectives of Integration	131
4.3	Organizational Incentives and Alignment	131
4.4	Data Sharing Framework for Integration	131
4.5	Aligning Data Requirements.....	132
4.6	Technological Feasibility.....	133
4.7	Data Sharing Tools.....	134
5.	MANAGEMENT AND SUPPORT	135
6.	RESOURCES.....	136
	MFL RESOURCE PACKAGE GLOSSARY.....	137

OVERVIEW OF THE MFL RESOURCE PACKAGE

The Master Facility List (MFL) Resource Package was developed to guide countries through the process of establishing or strengthening their MFL. The MFL Resource Package describes the various elements that must be in place to have a functional MFL including a governance structure; a comprehensive, up-to-date facility list; and a software platform to house and share the MFL data. It discusses key decisions that must be made during the planning and implementation phases; describes best practices for establishing, maintaining, and sharing an MFL; and summarizes resource needs. Additionally, the MFL Resource Package includes case studies from various countries, and links to tools and practical resources that will be helpful to the implementation team.

INTENDED AUDIENCE

The MFL Resource Package is targeted at individuals and organizations involved in the establishment of an MFL, whether at the planning stage or during implementation. The audience may include ministry officials, implementing partners, program managers, and donors interested in understanding the process and requirements for establishing a fully functional MFL, one that is complete, up-to-date, and capable of integration with other information systems.

HOW TO USE THE MFL RESOURCE PACKAGE

The MFL Resource Package consists of a series of 10 modules, each of which addresses a specific aspect of MFL implementation. The modules can be used together or individually, depending on the specific needs of the country and where it is on the development spectrum in achieving a fully functional MFL. Depending on a country's stage of MFL development, particular modules

预览已结束，完整报告链接和二维码如下：

https://www.yunbaogao.cn/report/index/report?reportId=5_25533

