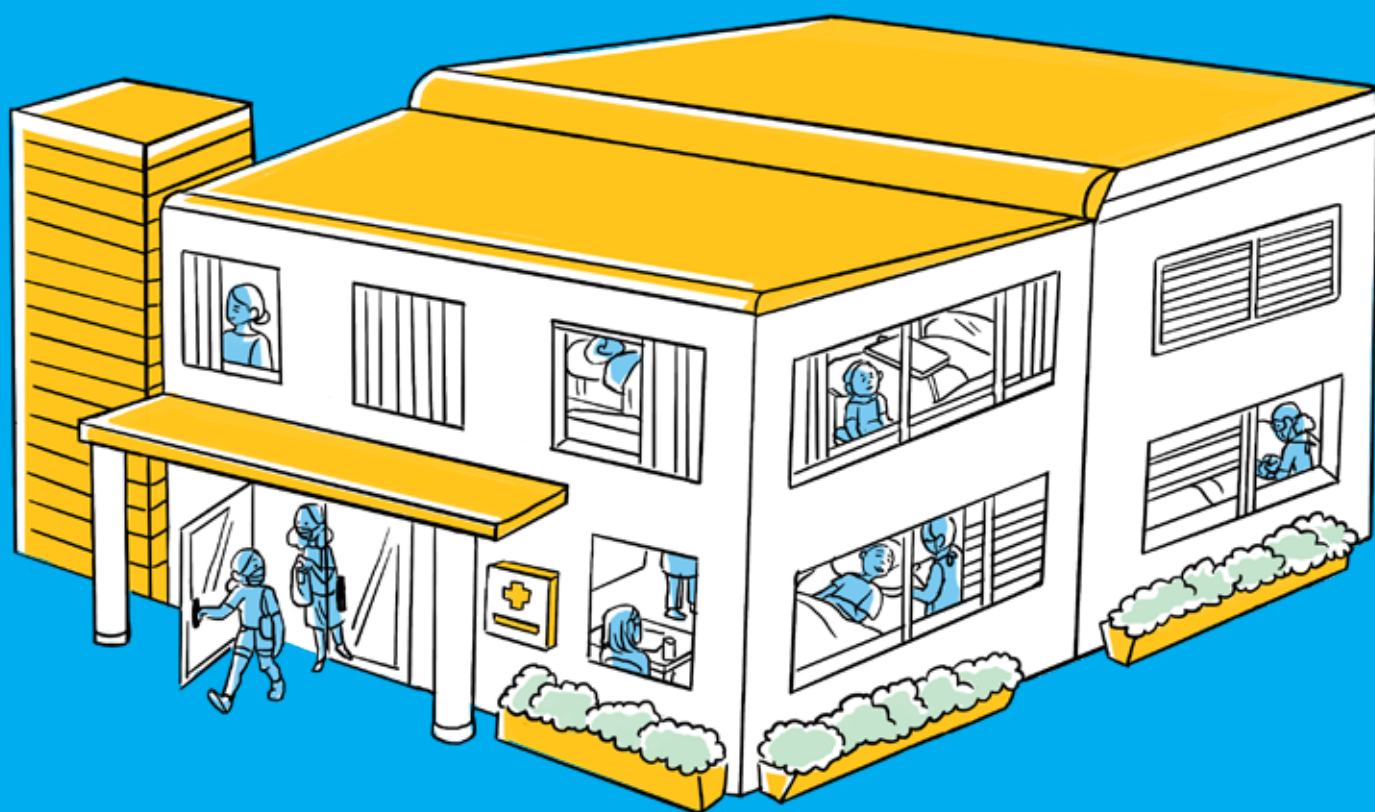


COVID-19 Infection Prevention and Control

Communication Toolkit for Long-Term Care Facilities



Introduction to the Toolkit

On 30 January 2020, the World Health Organization (WHO) declared the outbreak of the novel coronavirus (COVID-19) as a Public Health Emergency of International Concern (PHEIC). Responding to COVID-19 requires critical preparedness and response which includes equipping all levels of healthcare facilities and healthcare providers with information, procedures and tools required to safely and effectively work.

Long-term care (LTC) facility populations are at high risk of being affected by respiratory pathogens like COVID-19. As demonstrated by the COVID-19 pandemic, a strong infection prevention and control (IPC) programme is critical to protect both residents and staff.

Within this toolkit, 'Facility' refers to long-term care facility and 'Staff' refers to any employee of the LTC facility who provides care and support.

Purpose

The purpose of this communication toolkit is to protect residents and staff from infection and prevent potential spread of COVID-19 and other respiratory pathogens within LTC facilities. It contains a series of simplified messages and reminders based on WHO's technical guidance on infection prevention and control in the context of COVID-19.

This toolkit can be used with reference to the 'Guidance on COVID-19 for the care of older people and people living in long-term care facilities, other non-acute care facilities and home care', the COVID-19 Infection Prevention and Control Preparedness Checklist for Long-Term Care Facilities and training videos.

Target Audience

This toolkit is intended for LTC facilities management and staff to support with strengthening IPC practices.

Preventing and managing COVID-19 across long-term care services. Policy brief. WHO. 9 July 2020.
Nursing homes, skilled nursing facilities, assisted living facilities, residential facilities and residential long-term care facilities are collectively known as long-term care facilities that provide a variety of services, including medical and assistive care, to people who are unable to live independently in the community. Long term care facilities do not include home-based long-term care, community centres, adult day care facilities or respite care

Adaptation from "Preventing and managing COVID-19 across long-term care services. Policy brief. WHO. 9 July 2020."

Contents

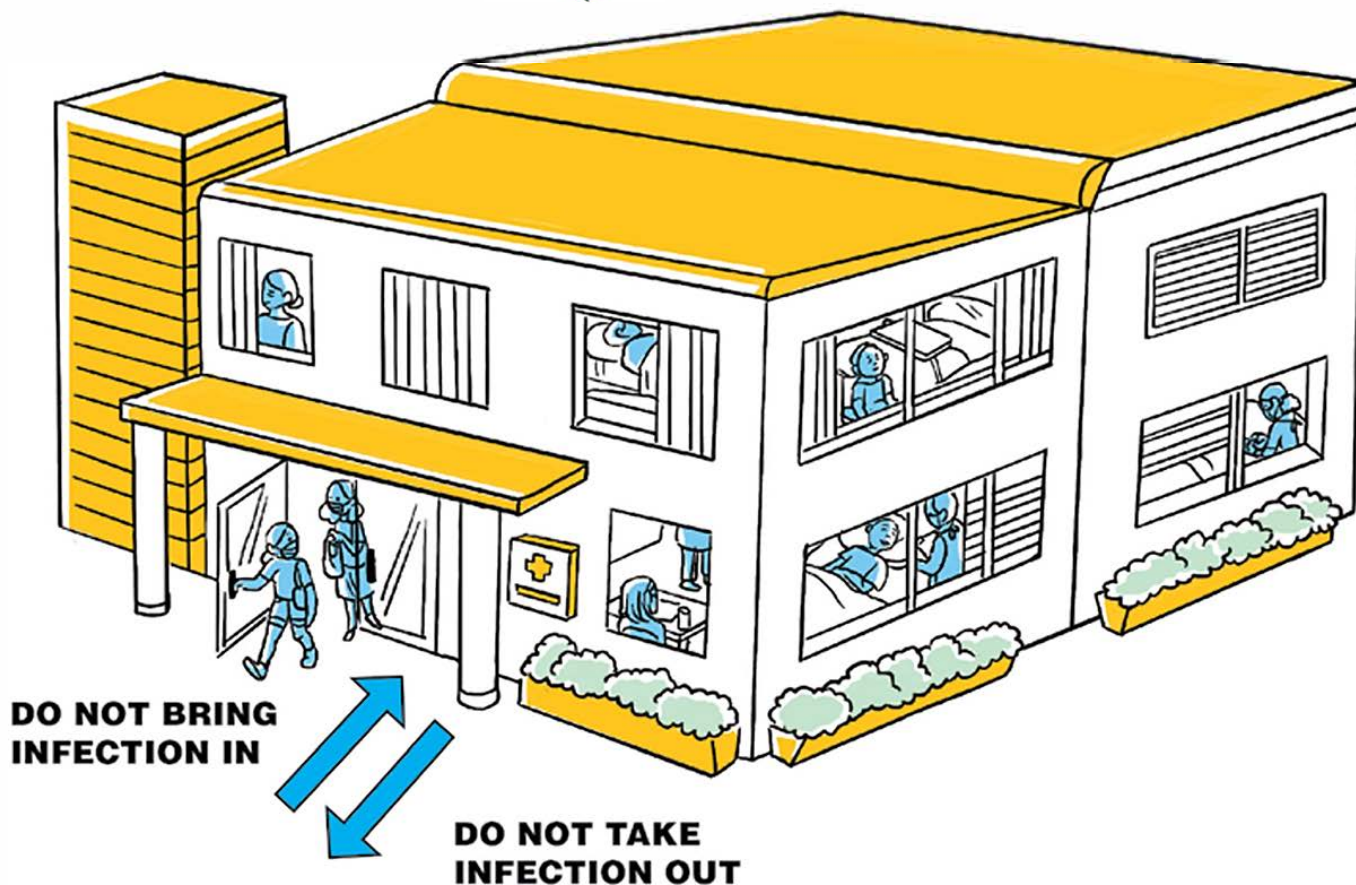
Title of Product	Primary Audience
1 Let's keep everyone safe	For staff, visitors and residents
2 Information sheet on COVID-19	For staff, visitors and residents
3 Preparing for COVID-19 in your facility	For staff
4 Managing residents with COVID-19	For staff
5 Communication with your residents	For staff
6 Communication to family members	For family
7 Tips for coping with stress	For staff and residents
8 Contact and Droplet precautions	For staff
9 Protecting yourself at work from COVID-19	For staff
10 PPE (Personal Protective Equipment) according to care activities	For staff
11 How to put on PPE (Personal Protective Equipment)	For staff
12 How to remove PPE (Personal Protective Equipment)	For staff
13 How to wear a mask	For staff
14 How to wear a respirator	For staff



LET'S KEEP EVERYONE SAFE FROM INFECTION



**Do not spread infection
within the facility**



STOP

**VISITORS
CONTRACTORS
VOLUNTEERS
STAFF/CAREGIVERS
CURRENT RESIDENTS
FUTURE RESIDENTS**



REMEMBER

Please do not enter the facility
if you are feeling unwell

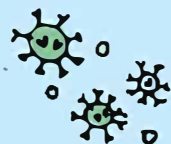
Practice hand hygiene when entering
and leaving the facility, before and after
visiting residents

Ensure you are maintaining at least
1 metre distance from others

Consider alternative non-touch greetings

Observe all facility procedures
and follow staff instructions at all times

5 THINGS TO KNOW



1. WHAT IS COVID-19?

COVID-19 is a disease caused by a new coronavirus, which has not been previously identified in humans.

Coronaviruses are a large family of viruses found in both animals and humans.



2. SYMPTOMS OF COVID-19

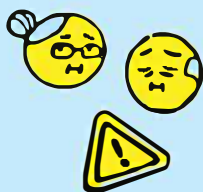
Mild symptoms include: cough, fever, sore throat and tiredness.

This can lead to more severe problems.



3. HOW DOES IT SPREAD?

COVID-19 spreads primarily through close contact with someone who is infected, but it can also spread if you touch contaminated objects or surfaces.



4. WHO IS MOST AT RISK?

- Older people
- People with certain medical conditions (i.e. diabetes and heart disease)

5. WHAT IS THE TREATMENT FOR COVID-19?

There is currently no known cure or vaccine.



However, some of the symptoms can be medically treated and can improve over time.



5 THINGS TO DO



1. KEEP YOUR HANDS CLEAN

Wash your hands with soap and water or, if your hands are not visibly dirty, use an alcohol-based handrub.

This will remove the virus if it is on your hands.



2. COVER YOUR MOUTH AND NOSE

Cough or sneeze into your bent elbow or into a tissue.

Immediately throw away the used tissue and clean your hands.



3. PRACTICE PHYSICAL DISTANCING

If possible, keep distance of at least 1 metre.

COVID-19 appears to spread more easily when in close contact with an infected person.



4. AVOID TOUCHING YOUR FACE

Avoid touching your eyes, nose and mouth. If you do, clean hands after touching your face or mask



5. LOOK AFTER YOUR HEALTH

If you have a fever, cough or difficulty breathing, seek medical care.

Phone ahead and inform the health center prior to visiting

Always follow the guidance of your healthcare professionals and national health advisories.

PREPARING FOR COVID-19 IN YOUR FACILITY

Screen everyone before entering the facility.

Display posters and flyers to remind patients and visitors to practice good hand and respiratory hygiene.

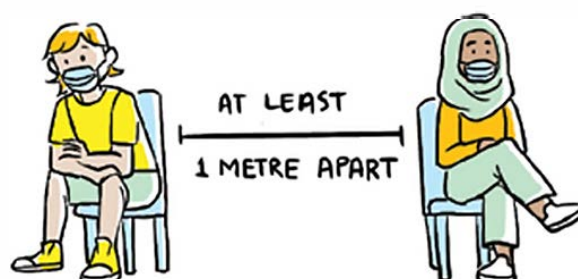


Have alcohol-based handrub dispensers or soap and water stations easily available for staff, residents and visitors.



Ensure the waiting area has seating that is at least 1 metre apart.

Look out for anyone who shows symptoms such as cough, fever, shortness of breath and difficulty breathing.



BE READY **Notes for staff**

Here's how you can protect your residents, visitors and each other from any infection.



Perform hand hygiene frequently.

Be trained on the importance, selection and proper use of Personal Protective Equipment (PPE).

Be trained to identify symptoms of potential COVID-19 infection and offer medical masks to suspected cases.

Isolate a suspected case promptly.

Know criteria for identifying suspected COVID-19 cases and isolate immediately.

Understand criteria to discharge residents from isolation.

Remember to look out for each other's health and if you have concerns talk with your supervisor.

MANAGING PLACEMENT

- Immediately isolate suspected and confirmed cases of COVID-19
- If possible, place residents in single rooms with their own bathroom
- Suspected and confirmed cases should be kept separate
- Proper precautions should be followed
- Maintain at least 1 metre distance between all residents.
- Do not put more than one resident in a single bed
- Reduce stress and anxiety by communicating with residents about what you do and why you do it.



MANAGING ENVIRONMENT

- Limit the movement of residents to reduce potential spread of infection throughout the facility
- If the resident needs to be moved, plan the move ahead
- All staff and visitors should wear their Personal Protective Equipment (PPE) if they are to be in direct contact with the infected resident
- Perform regular environmental cleaning and disinfection
- Maintain good ventilation. If possible, open windows
- Dedicate equipment for residents in isolation



MANAGING VISITORS

- Check symptoms of all visitors before entering the facility
- Limit the number of visitors per resident
- All visitors should wear the required Personal Protective Equipment (PPE) and visits should be recorded to allow for contact tracing



COMMUNICATING WITH YOUR RESIDENTS

Be respectful, polite and empathetic.

Be aware that residents may be panicked, stressed or afraid.

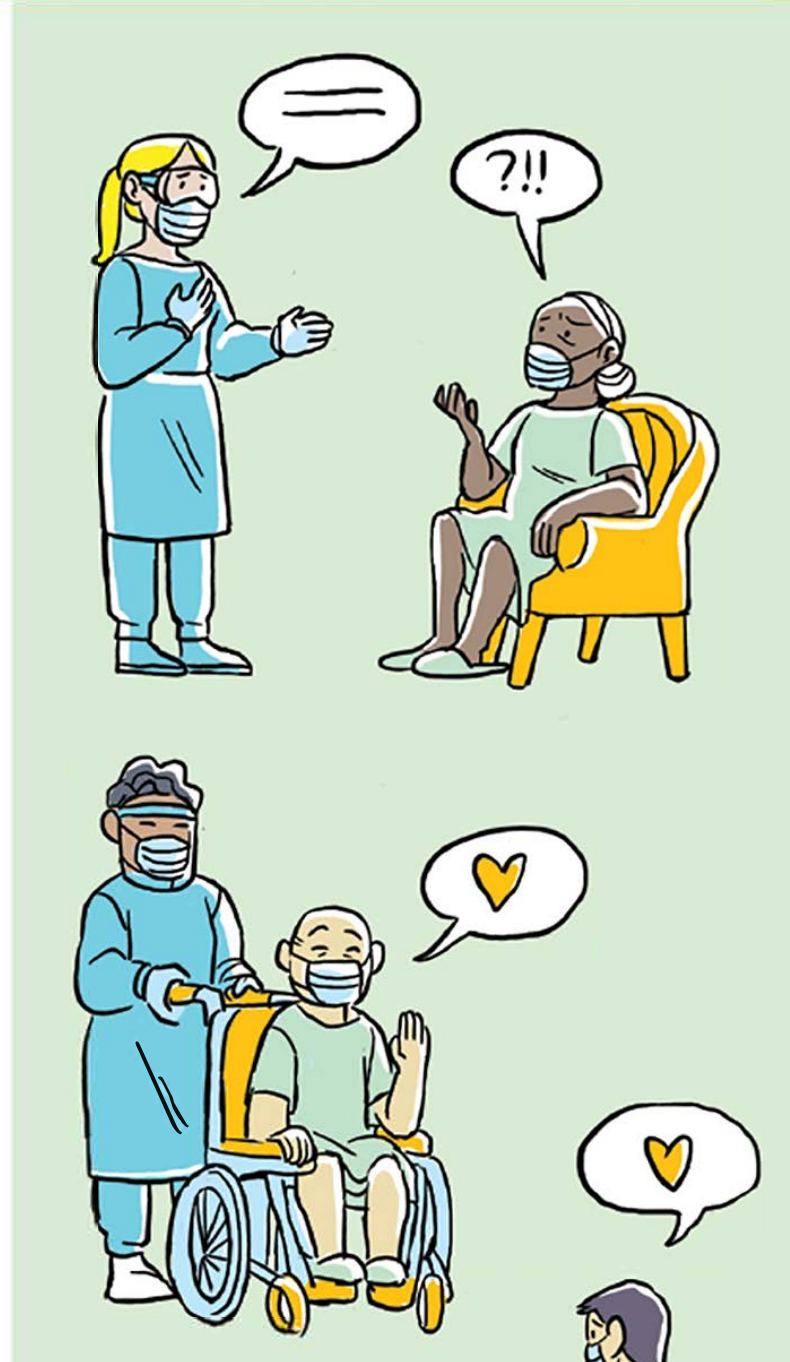
Listen carefully and respond to questions and concerns.

It is okay to comfort the residents, when wearing PPE.

If there are specific questions that you do not know the answers to, it's okay to admit it.

Share information with residents and visitors in ways they will easily understand. These may include printed material in clear view posted around the facility.

Explain the facility procedures for COVID-19 in advance and prepare residents for possible changes



预览已结束，完整报告链接和二维码如下：

https://www.yunbaogao.cn/report/index/report?reportId=5_24445

