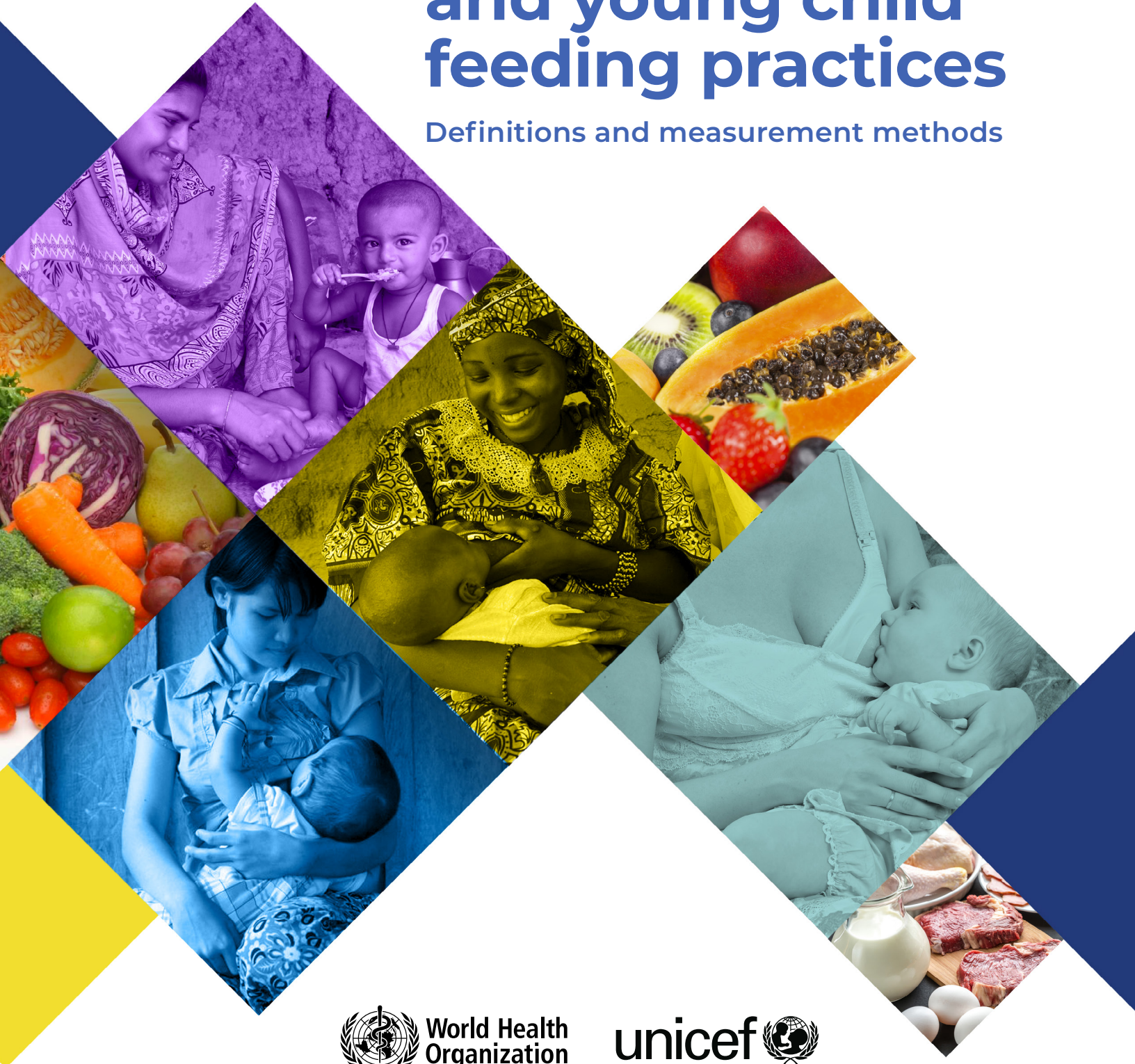


# Indicators for assessing infant and young child feeding practices

Definitions and measurement methods



World Health  
Organization

unicef 



# Indicators for assessing infant and young child feeding practices

Definitions and measurement methods



Indicators for assessing infant and young child feeding practices: definitions and measurement methods

ISBN (WHO) 978-92-4-001838-9 (electronic version)

ISBN (WHO) 978-92-4-001839-6 (print version)

© **World Health Organization and the United Nations Children's Fund (UNICEF), 2021**

This joint report reflects the activities of the World Health Organization (WHO) and the United Nations Children's Fund (UNICEF)

Some rights reserved. This work is available under the Creative Commons Attribution-NonCommercial-ShareAlike 3.0 IGO licence (CC BY-NC-SA 3.0 IGO; <https://creativecommons.org/licenses/by-nc-sa/3.0/igo>).

Under the terms of this licence, you may copy, redistribute and adapt the work for non-commercial purposes, provided the work is appropriately cited, as indicated below. In any use of this work, there should be no suggestion that WHO or UNICEF endorses any specific organization, products or services. The unauthorized use of the WHO or UNICEF names or logos is not permitted. If you adapt the work, then you must license your work under the same or equivalent Creative Commons licence. If you create a translation of this work, you should add the following disclaimer along with the suggested citation: "This translation was not created by the World Health Organization (WHO) or the United Nations Children's Fund (UNICEF). Neither WHO nor UNICEF are responsible for the content or accuracy of this translation. The original English edition shall be the binding and authentic edition".

Any mediation relating to disputes arising under the licence shall be conducted in accordance with the mediation rules of the World Intellectual Property Organization (<http://www.wipo.int/amc/en/mediation/rules>).

**Suggested citation.** Indicators for assessing infant and young child feeding practices: definitions and measurement methods. Geneva: World Health Organization and the United Nations Children's Fund (UNICEF), 2021. Licence: CC BY-NC-SA 3.0 IGO; <https://creativecommons.org/licenses/by-nc-sa/3.0/igo>.

**Cataloguing-in-Publication (CIP) data.** CIP data are available at <http://apps.who.int/iris>.

**Sales, rights and licensing.** To purchase WHO publications, see <http://apps.who.int/bookorders>. To submit requests for commercial use and queries on rights and licensing, see <http://www.who.int/about/licensing>.

**Third-party materials.** If you wish to reuse material from this work that is attributed to a third party, such as tables, figures or images, it is your responsibility to determine whether permission is needed for that reuse and to obtain permission from the copyright holder. The risk of claims resulting from infringement of any third-party-owned component in the work rests solely with the user.

**General disclaimers.** The designations employed and the presentation of the material in this publication do not imply the expression of any opinion whatsoever on the part of WHO or UNICEF concerning the legal status of any country, territory, city or area or of its authorities, or concerning the delimitation of its frontiers or boundaries. Dotted and dashed lines on maps represent approximate border lines for which there may not yet be full agreement.

The mention of specific companies or of certain manufacturers' products does not imply that they are endorsed or recommended by WHO or UNICEF in preference to others of a similar nature that are not mentioned. Errors and omissions excepted, the names of proprietary products are distinguished by initial capital letters.

All reasonable precautions have been taken by WHO and UNICEF to verify the information contained in this publication. However, the published material is being distributed without warranty of any kind, either expressed or implied. The responsibility for the interpretation and use of the material lies with the reader. In no event shall WHO or UNICEF be liable for damages arising from its use.

Cover design and layout: Alberto March (Barcelona, Spain)

# CONTENTS

<b>ACKNOWLEDGEMENTS</b>	<b>v</b>
<b>ACRONYMS</b>	<b>vi</b>
<b>LIST OF TABLES</b>	<b>vii</b>
<b>LIST OF FIGURES</b>	<b>viii</b>
<b>LIST OF BOXES</b>	<b>viii</b>
<b>PART 1: DEFINITIONS</b>	<b>1</b>
<b>A. Introduction</b>	<b>1</b>
Scope of document	2
Audience	3
<b>B. Definitions of indicators</b>	<b>5</b>
<b>1. Breastfeeding indicators</b>	<b>5</b>
1.1. Ever breastfed (EvBF)	5
1.2. Early initiation of breastfeeding (EIBF)	5
1.3. Exclusively breastfed for the first two days after birth (EBF2D)	5
1.4. Exclusive breastfeeding under six months (EBF)	6
1.5. Mixed milk feeding under six months (MixMF)	7
1.6. Continued breastfeeding 12–23 months (CBF)	7
<b>2. Complementary feeding indicators</b>	<b>8</b>
2.1. Introduction of solid, semi-solid or soft foods 6–8 months (ISSSF)	8
2.2. Minimum dietary diversity 6–23 months (MDD)	8
2.3. Minimum meal frequency 6–23 months (MMF)	9
2.4. Minimum milk feeding frequency for non-breastfed children 6–23 months (MMFF)	10
2.5. Minimum acceptable diet 6–23 months (MAD)	10
2.6. Egg and/or flesh food consumption 6–23 months (EFF)	11
2.7. Sweet beverage consumption 6–23 months (SwB)	11
2.8. Unhealthy food consumption 6–23 months (UFC)	12
2.9. Zero vegetable or fruit consumption 6–23 months (ZVF)	13
<b>3. Other Indicators</b>	<b>14</b>
3.1. Bottle feeding 0–23 months (BoF)	14
3.2. Infant feeding area graphs (AG)	14
<b>C. Changes between the 2008 and 2021 IYCF indicators</b>	<b>16</b>

<b>PART 2: MEASUREMENT METHODS</b>	<b>18</b>
<b>INTRODUCTION</b>	<b>18</b>
<b>A. Overview of methods</b>	<b>18</b>
A.1. Survey design	18
A.2. Survey respondents	19
A.3. Focus IYC, indicator denominators and precision of estimates	19
A.4. Recall periods	20
A.5. Method for asking about beverages given to the child	21
A.6. Methods for asking about solid/semi-solid foods fed to the child	21
A.7. Methods for recording responses	22
<b>B. Example questionnaires</b>	<b>24</b>
B.1. Questions about feeding immediately after birth	25
B.2. Questions about current breast- and bottle feeding	25
B.3. Questions about liquids	26
B.4. Questions about foods	28
<b>C. Instructions for calculating indicators and area graph values</b>	<b>32</b>
<b>D. Recommendations for adapting the questionnaire to survey context</b>	<b>42</b>
D.1. General approach	42
D.2. Adapting the food groups to include sentinel unhealthy foods	44
D.3. Optional liquid and food groups	44
<b>E. Selecting and training interviewers</b>	<b>47</b>
E.1. Interviewer selection	47
E.2. Interviewer training for liquid and food group recalls	47
E.2.1. Introducing the questionnaire (both methods)	49
E.2.2. Description of questionnaire rows and exercise in classifying foods	51
E.2.3. Introducing the recall method and recording information	53
E.2.4. Classroom practice when rehearsing the recall	59
E.2.5. Field practice	59
<b>REFERENCES</b>	<b>56</b>
<b>ANNEXES</b>	<b>60</b>
<b>Annex 1: Participants in the 2018 Technical Consultation</b>	<b>60</b>
<b>Annex 2: Participants in the 2017 Technical Consultation</b>	<b>62</b>
<b>Annex 3: Sampling and design issues specific to food group recall surveys</b>	<b>64</b>
<b>Annex 4: Resources on survey methodology</b>	<b>66</b>
<b>Annex 5: Understanding and adapting liquid groups</b>	<b>69</b>
<b>Annex 6: Understanding and adapting food groups</b>	<b>72</b>
<b>Annex 7: Syntax for calculating indicators and constructing area graphs</b>	<b>94</b>
<b>Annex 8: Questionnaire rows and food groups in minimum dietary diversity (MDD) indicator</b>	<b>110</b>



## ACKNOWLEDGEMENTS

This technical guide is an outcome of the WHO-UNICEF Technical Expert Advisory group on nutrition Monitoring (TEAM) and was supported by the Bill & Melinda Gates Foundation.

This document was prepared by the Working Group of the WHO-UNICEF Technical Expert Advisory Group on Nutrition Monitoring (TEAM) for Infant and Young Child Feeding (IYCF) indicators under the joint coordination of the Monitoring Nutrition Status and Food Safety Events Unit, Department of Nutrition and Food Safety, World Health Organization (WHO) and Data & Analytics Section, Division of Data, Analytics, Planning and Monitoring, UNICEF.

The Working Group members were: Mary Arimond and Trevor Croft (TEAM); Laurence Grummer-Strawn and Kuntal Kumar Saha (WHO Headquarters); and Chika Hayashi, Julia Krasevec and Vrinda Mehra (UNICEF Headquarters). The Working Group conceptualized and led the production of this document including its writing and revision.

The Working Group acknowledges the time and invaluable inputs provided by all participants (see [Annex 1](#)) in the Inter-Agency Technical Consultation on Infant and Young Child Feeding Indicators, held in Geneva on 11–13 July 2018. We also acknowledge the technical contribution of the participants (see [Annex 2](#)) at the 2017 consultation in New York to finalize revision of the minimum dietary diversity (MDD) indicator. The Working Group is grateful to Anna Herforth, Kiersten Johnson, Sorrel Namaste and Bo Pedersen for sharing specific experiences and insights related to operationalizing indicators, and to France Begin, Megan Deitchler, Ashima Garg, Monica Kothari, Sorrel Namaste, Bo Pedersen and Alissa Pries for reviewing and commenting on an earlier draft.

We acknowledge the respective technical contributions made by Mandana Arabi and Chessa Lutter (consultants) towards development of the background documents on complementary feeding and breastfeeding.

We also acknowledge the efforts of all those involved in developing the earlier edition of this document.

## LIST OF ACRONYMS

### INDICATOR SHORT NAMES, IN ALPHABETICAL ORDER

<b>BoF</b>	Bottle feeding 0–23 months
<b>CBF</b>	Continued breastfeeding 12–23 months
<b>EBF</b>	Exclusive breastfeeding under six months
<b>EBF2D</b>	Exclusively breastfed for the first two days after birth
<b>EFF</b>	Egg and/or flesh food consumption 6–23 months
<b>EIBF</b>	Early initiation of breastfeeding
<b>EvBF</b>	Ever breastfed
<b>ISSSF</b>	Introduction of solid, semi-solid or soft foods 6–8 months
<b>MAD</b>	Minimum acceptable diet 6–23 months
<b>MDD</b>	Minimum dietary diversity 6–23 months
<b>MixMF</b>	Mixed milk feeding under six months
<b>MMF</b>	Minimum meal frequency 6–23 months
<b>MMFF</b>	Minimum milk feeding frequency for non-breastfed children 6–23 months
<b>SwB</b>	Sweet beverage consumption 6–23 months
<b>UFC</b>	Unhealthy food consumption 6–23 months
<b>ZVF</b>	Zero vegetable or fruit consumption 6–23 months

### OTHER ACRONYMS

<b>CAPI</b>	Computer-assisted personal interviewing
<b>DHS</b>	Demographic and Health Surveys
<b>IYC</b>	Infants and young children
<b>IYCF</b>	Infant and young child feeding

预览已结束，完整报告链接和二维码如下：

[https://www.yunbaogao.cn/report/index/report?reportId=5\\_23975](https://www.yunbaogao.cn/report/index/report?reportId=5_23975)

