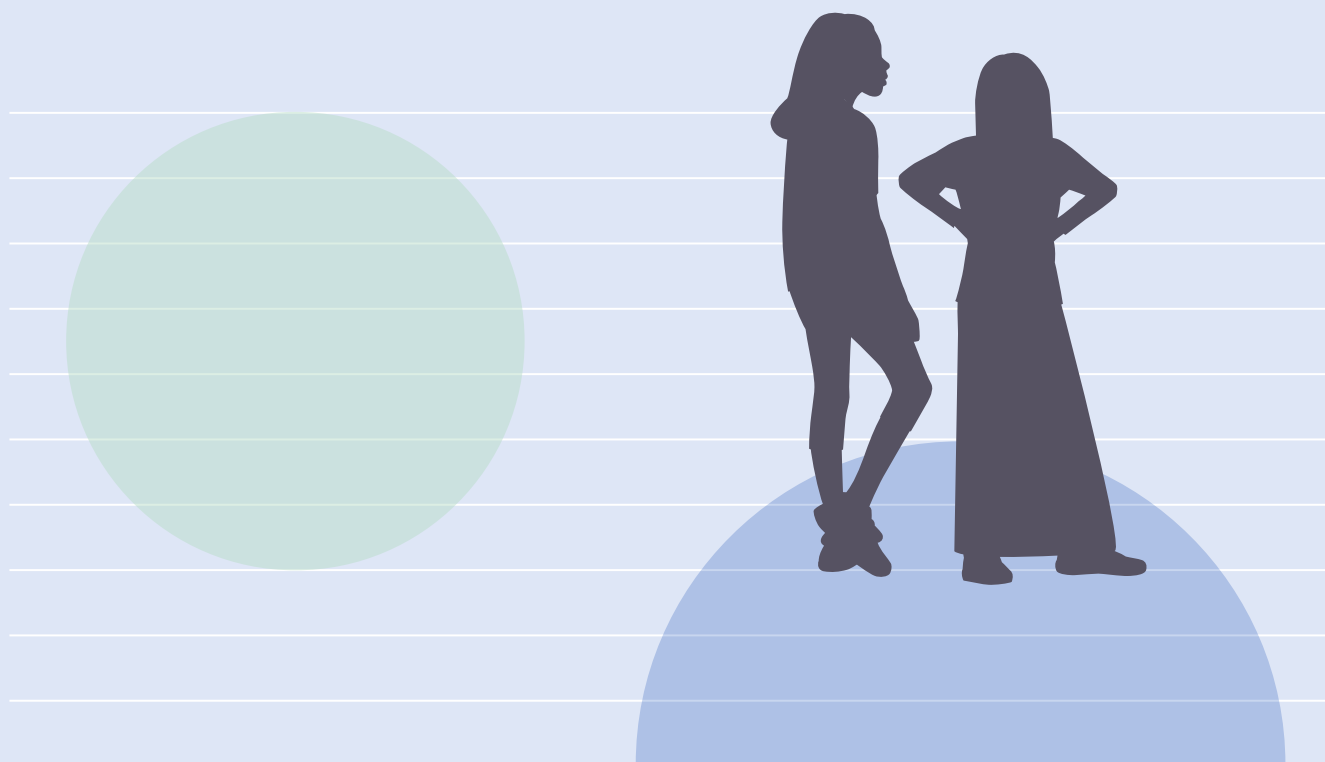


WHO guideline on school health services

**Web Annex H. Menu of
interventions with WHO resources**



WHO guideline on school health services

**Web Annex H. Menu of
interventions with WHO resources**

WHO guideline on school health services. Web Annex H. Menu of interventions with WHO resources

ISBN 978-92-4-003073-2 (electronic version)

© World Health Organization 2021

Some rights reserved. This work is available under the Creative Commons Attribution-NonCommercial-ShareAlike 3.0 IGO licence (CC BY-NC-SA 3.0 IGO; <https://creativecommons.org/licenses/by-nc-sa/3.0/igo>).

Under the terms of this licence, you may copy, redistribute and adapt the work for non-commercial purposes, provided the work is appropriately cited, as indicated below. In any use of this work, there should be no suggestion that WHO endorses any specific organization, products or services. The use of the WHO logo is not permitted. If you adapt the work, then you must license your work under the same or equivalent Creative Commons licence. If you create a translation of this work, you should add the following disclaimer along with the suggested citation: "This translation was not created by the World Health Organization (WHO). WHO is not responsible for the content or accuracy of this translation. The original English edition shall be the binding and authentic edition".

Any mediation relating to disputes arising under the licence shall be conducted in accordance with the mediation rules of the World Intellectual Property Organization (<http://www.wipo.int/amc/en/mediation/rules/>).

Suggested citation. Web Annex H. Menu of interventions with WHO resources. In: WHO guideline on school health services. Geneva: World Health Organization; 2021. Licence: CC BY-NC-SA 3.0 IGO.

Cataloguing-in-Publication (CIP) data. CIP data are available at <http://apps.who.int/iris>.

Sales, rights and licensing. To purchase WHO publications, see <http://apps.who.int/bookorders>. To submit requests for commercial use and queries on rights and licensing, see <http://www.who.int/about/licensing>.

Third-party materials. If you wish to reuse material from this work that is attributed to a third party, such as tables, figures or images, it is your responsibility to determine whether permission is needed for that reuse and to obtain permission from the copyright holder. The risk of claims resulting from infringement of any third-party-owned component in the work rests solely with the user.

General disclaimers. The designations employed and the presentation of the material in this publication do not imply the expression of any opinion whatsoever on the part of WHO concerning the legal status of any country, territory, city or area or of its authorities, or concerning the delimitation of its frontiers or boundaries. Dotted and dashed lines on maps represent approximate border lines for which there may not yet be full agreement.

The mention of specific companies or of certain manufacturers' products does not imply that they are endorsed or recommended by WHO in preference to others of a similar nature that are not mentioned. Errors and omissions excepted, the names of proprietary products are distinguished by initial capital letters.

All reasonable precautions have been taken by WHO to verify the information contained in this publication. However, the published material is being distributed without warranty of any kind, either expressed or implied. The responsibility for the interpretation and use of the material lies with the reader. In no event shall WHO be liable for damages arising from its use.

This publication forms part of the WHO guideline entitled *WHO guideline on school health services*. It is being made publicly available for transparency purposes and information, in accordance with the *WHO handbook for guideline development*, 2nd edition (2014).

Contents

Acknowledgements	iv
Abbreviations	vi
Web Annex H. Menu of interventions with WHO sources	1
References	7
Table H.1 Menu of interventions with WHO sources	2
Table H.2 SHS intervention examples of each type of “WHO source”, with compendium evidence	6

Acknowledgements

Drafting of the guideline

Mary Louisa Plummer, Child and Adolescent Health Consultant, United States of America, and David A. Ross, Department of Maternal, Newborn, Child and Adolescent Health and Ageing, WHO headquarters.

GRADE methodologist

Nandi Siegfried, Public Health Medicine Specialist, South Africa.

Steering Group (WHO staff unless otherwise noted)

Coordination

David Ross and Kid Kohl, Department of Maternal, Newborn, Child and Adolescent Health and Ageing.

Members

Jamela Al-Raiby, WHO Regional Office for the Eastern Mediterranean; Wole Ameyan, Department of Global HIV, Hepatitis and Sexually Transmitted Infections Programmes; Valentina Baltag, Department of Maternal, Newborn, Child and Adolescent Health and Ageing; Faten Ben-Abdelaziz, Department of Health Promotion; Paul Bloem, Department of Immunization, Vaccines and Biologicals; Sonja Caffè, WHO Regional Office for the Americas; Marie Clem Carlos, Department of Noncommunicable Diseases; Shelly Chadha, Department of Noncommunicable Diseases; Venkatraman Chandra-Mouli, Department of Sexual and Reproductive Health and Research; Katrin Engelhardt, Department of Nutrition and Food Safety; Kaia Engesveen, Department of Nutrition and Food Safety; Regina Guthold, Department of Maternal, Newborn, Child and Adolescent Health and Ageing; Joanna Herat, United Nations Educational, Scientific and Cultural Organization (UNESCO); Symplise Mbola Mbassi, WHO Regional Office for Africa; Rajesh Mehta, WHO Regional Office for South-East Asia; Denise Mupfasoni, Department of Control of Neglected Tropical Diseases; Martina Penazzato, Department of Global HIV, Hepatitis and Sexually Transmitted Infections Programmes; Marina Plesons, Department of Sexual

and Reproductive Health and Research; Leanne Riley, Department of Noncommunicable Diseases; Chiara Servili, Department of Mental Health and Substance Use; Stéphanie Shendale, Department of Immunization, Vaccines and Biologicals; Marcus Stahlhofer, Department of Maternal, Newborn, Child and Adolescent Health and Ageing; Howard Sobel, WHO Regional Office for the Western Pacific; Martin Weber, WHO Regional Office for Europe; and Juana Willumsen, Department of Health Promotion.

Evidence review and synthesis

Systematic overview of systematic reviews of comprehensive school health services

Julia Levinson, Kid Kohl, Valentina Baltag and David Ross.

Systematic reviews of the effectiveness and acceptability of comprehensive school health services

Paul Montgomery, University of Birmingham, United Kingdom; Jacoby Patterson, Independent Senior Research Consultant, United Kingdom; and Anders M. Bach-Mortensen, University of Oxford, United Kingdom.

Review of global WHO health service interventions for 5–19-year-olds

Mary Plummer, Kid Kohl and David Ross.

Survey of expert opinion on school health services

Mary Plummer; Ace Chan, Stigma and Resilience Among Vulnerable Youth Centre (SARAVYC), School of Nursing, University of British Columbia, Vancouver, Canada; Kid Kohl; Ashley Taylor (SARAVYC); Elizabeth Saewyc (SARAVYC); and David Ross.

Brief exploratory review of school health services globally

Mary Plummer, Kid Kohl and Valentina Baltag.

Guideline Development Group

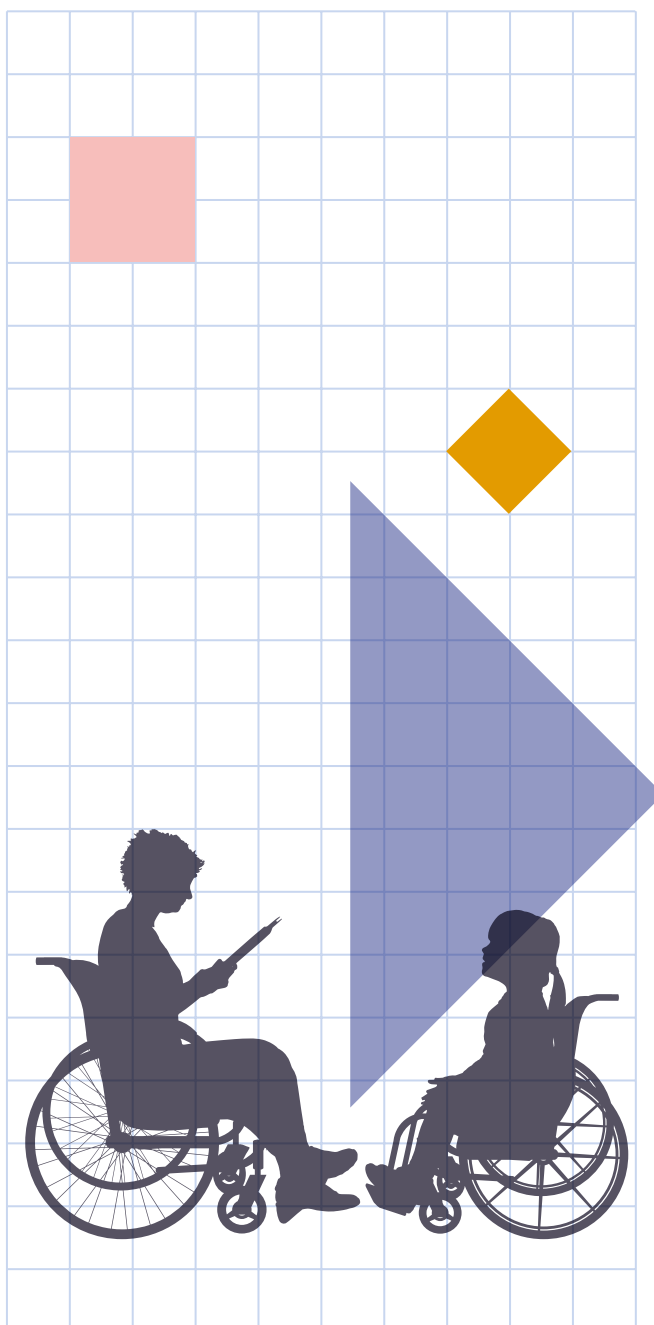
Rima Afifi, University of Iowa, United States of America; Habib Benzian, New York University, United States of America; Harriet Birungi, Population Council, Kenya; Rashida Ferrand, Biomedical Research and Training Institute, Zimbabwe; Jorge Gaete, Universidad de los Andes, Chile; Najat Gharbi, Ministry of Health, Morocco; Murthy Gudlavalleti Venkata Satyanarayana, Indian Institute of Public Health, India; Henrica J. M. Fransen, University of Tunis El Manar, Tunisia; Julia Levinson, Boston University, United States of America; Erin D. Maughan, National Association of School Nurses, United States of America; Ella Cecilia Naliponguit, Department of Education, Philippines; Atif Rahman, University of Liverpool, United Kingdom; Elizabeth Saewyc (Chair), University of British Columbia, Canada; Susan Sawyer, University of Melbourne, Australia; Hui-Jing Shi, Fudan University, China; and Sharlen Vigan, World Bank, Togo.

External Review Group

Bruce Dick, Adolescent Health Consultant, Switzerland; Chris Kjolhede, Bassett Health Care Network, United States of America; Regina Lee, Professor of Nursing, University of Newcastle, Australia; Maziko Matemvu, Her Liberty, Malawi; Antony Morgan, Glasgow Caledonian University, United Kingdom; Blanca Pianello Castillo, International Federation of Medical Students' Associations, Spain.

Financial support

The United Kingdom Department for International Development, the Bill and Melinda Gates Foundation and the United States Agency for International Development.



Abbreviations

GDG	Guideline Development Group
-----	-----------------------------

GRC	Guideline Review Committee
-----	----------------------------

SHS	school health services
-----	------------------------

Glossary

A glossary of terms used throughout the guidance and its web annexes is provided in the guidance document.

Web Annex H

Menu of interventions with WHO sources

Table. H.1 shows the menu of 87 interventions that the Guideline Development Group (GDG) identified as essential or suitable within school health services (SHS), organized by health area, type of health activity, WHO source and specific GDG categorization. Importantly, many interventions could have been placed in multiple cells of the menu, but, for the sake of simplicity and clarity, only one cell has been selected for each intervention. Also, summary names of interventions have been used in this menu; the full, precise wording of each intervention is given in Table 7 of the SHS guideline. This at-a-glance menu is linked to a compendium (Web Annex A) that details the published global WHO evidence base and specific procedures or activities for each of the 87 interventions.



预览已结束，完整报告链接和二维码如下：

https://www.yunbaogao.cn/report/index/report?reportId=5_23807

