

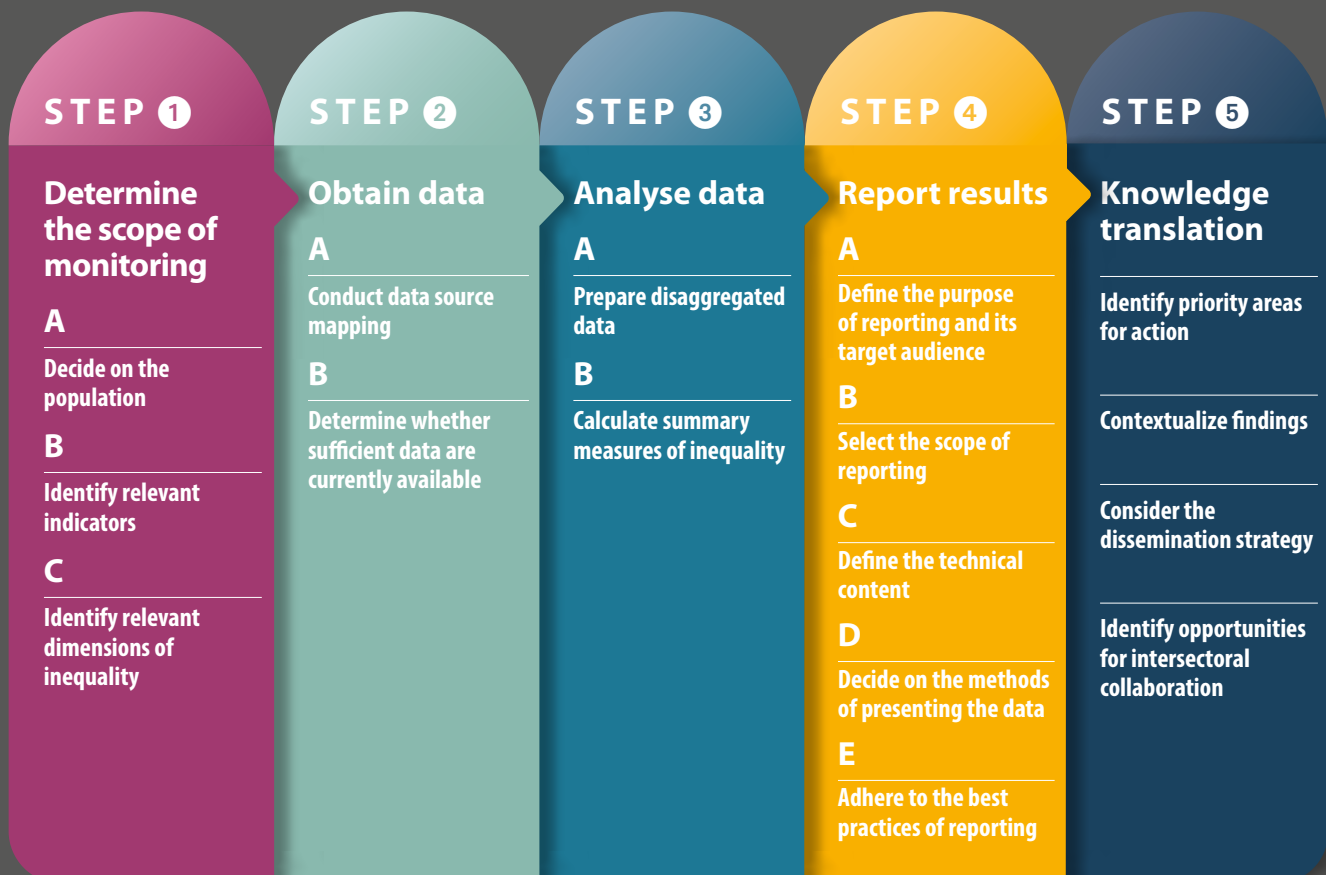
COMPANION WORKBOOK

EXERCISES TO GUIDE THE PROCESS OF INEQUALITY
MONITORING IN SEXUAL, REPRODUCTIVE, MATERNAL,
NEWBORN, CHILD AND ADOLESCENT HEALTH



**World Health
Organization**

The cycle of health inequality monitoring



COMPANION WORKBOOK

EXERCISES TO GUIDE THE PROCESS OF INEQUALITY
MONITORING IN SEXUAL, REPRODUCTIVE, MATERNAL,
NEWBORN, CHILD AND ADOLESCENT HEALTH

WHO/DNA/MCA/SRH/2022.1

© World Health Organization 2022

Some rights reserved. This work is available under the Creative Commons Attribution-NonCommercial-ShareAlike 3.0 IGO licence (CC BY-NC-SA 3.0 IGO; <https://creativecommons.org/licenses/by-nc-sa/3.0/igo>).

Under the terms of this licence, you may copy, redistribute and adapt the work for non-commercial purposes, provided the work is appropriately cited, as indicated below. In any use of this work, there should be no suggestion that WHO endorses any specific organization, products or services. The use of the WHO logo is not permitted. If you adapt the work, then you must license your work under the same or equivalent Creative Commons licence. If you create a translation of this work, you should add the following disclaimer along with the suggested citation: "This translation was not created by the World Health Organization (WHO). WHO is not responsible for the content or accuracy of this translation. The original English edition shall be the binding and authentic edition".

Any mediation relating to disputes arising under the licence shall be conducted in accordance with the mediation rules of the World Intellectual Property Organization (<http://www.wipo.int/amc/en/mediation/rules/>).

Suggested citation. Companion workbook: exercises to guide the process of inequality monitoring in sexual, reproductive, maternal, newborn, child and adolescent health. Geneva: World Health Organization; 2022 (WHO/DNA/MCA/SRH/2022.1). Licence: CC BY-NC-SA 3.0 IGO.

Cataloguing-in-Publication (CIP) data. CIP data are available at <http://apps.who.int/iris>.

Sales, rights and licensing. To purchase WHO publications, see <http://apps.who.int/bookorders>. To submit requests for commercial use and queries on rights and licensing, see <https://www.who.int/copyright>.

Third-party materials. If you wish to reuse material from this work that is attributed to a third party, such as tables, figures or images, it is your responsibility to determine whether permission is needed for that reuse and to obtain permission from the copyright holder. The risk of claims resulting from infringement of any third-party-owned component in the work rests solely with the user.

General disclaimers. The designations employed and the presentation of the material in this publication do not imply the expression of any opinion whatsoever on the part of WHO concerning the legal status of any country, territory, city or area or of its authorities, or concerning the delimitation of its frontiers or boundaries. Dotted and dashed lines on maps represent approximate border lines for which there may not yet be full agreement.

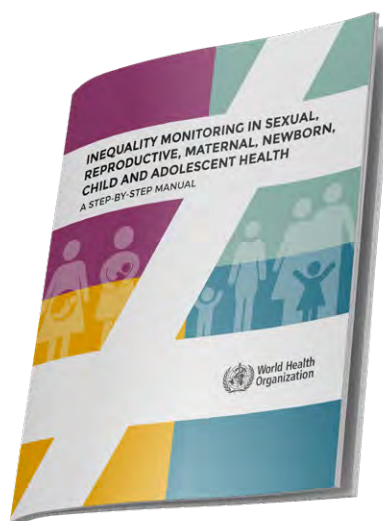
The mention of specific companies or of certain manufacturers' products does not imply that they are endorsed or recommended by WHO in preference to others of a similar nature that are not mentioned. Errors and omissions excepted, the names of proprietary products are distinguished by initial capital letters.

All reasonable precautions have been taken by WHO to verify the information contained in this publication. However, the published material is being distributed without warranty of any kind, either expressed or implied. The responsibility for the interpretation and use of the material lies with the reader. In no event shall WHO be liable for damages arising from its use.

Contents

General considerations	2
STEP 1 Determine the scope of monitoring	4
1A. Decide on the population	4
1B. Identify relevant indicators	4
1C. Identify relevant dimensions of inequality	6
STEP 2 Obtain data	9
2A. Conduct data source mapping	9
2B. Determine whether sufficient data are currently available	12
STEP 3 Data analysis	14
3A. Prepare disaggregated data	15
3B. Calculate summary measures of inequality	16
STEP 4 Report results	19
4A. Define the purpose of reporting and its target audience	20
4B. Select the scope of reporting	21
4C. Define the technical content	22
4D. Decide on the methods of presenting the data	23
4E. Adhere to the best practices of reporting	24
STEP 5 Knowledge translation	25

This *Companion workbook* accompanies *Inequality monitoring in sexual, reproductive, maternal, newborn, child and adolescent health: a step-by-step manual*.¹ It contains exercises² that facilitate the application of the general concepts of health inequality monitoring to the topic of sexual, reproductive, maternal, newborn, child and adolescent health (SRMNCAH) in a specific context. Corresponding to the steps of the health inequality monitoring cycle, the workbook may be used to record personal reflections on key concepts, or to guide and document group planning sessions for inequality monitoring. Throughout the workbook there are prompts to make note of the key decisions made at each step of monitoring. This allows the workbook to serve as a detailed internal record of the monitoring process and of the rationale for how it was undertaken. Ideally, SRMNCAH inequality monitoring should be repeated regularly; therefore, this workbook can serve as a reference for subsequent rounds of monitoring.



¹ The manual is available from ([WHO](#)).

² These exercises have been created for and used in health inequality monitoring training workshops and eLearning courses.

General considerations

Why is SRMNCAH inequality monitoring being done? Why now?

Which policy cycles or windows of opportunity are important to keep in mind? (e.g. annual reporting cycles, programme or policy review cycles, meetings or conventions)

Which groups of people will use the knowledge generated from the monitoring exercise? (e.g. policy-makers, programme managers, affected communities or groups, representatives of non-profit organizations)

预览已结束，完整报告链接和二维码如下：

https://www.yunbaogao.cn/report/index/report?reportId=5_23376

