

WFP Jordan - General Food Assistance to Refugees: COVID19 Monitoring Report #1

General Food Assistance to Refugees: COVID19 Monitoring Report #1



Introduction

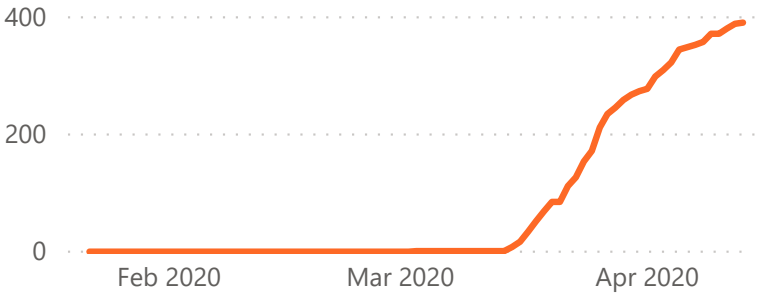
In Jordan, WFP responds to the food requirements of 480,000 refugees in camps and communities through the provision of monthly food assistance in the form of cash-based transfers. The majority of refugees come from Syria, Iraq, Yemen, Sudan, and Somalia. In Azraq and Zaatari camps, 110,000 Syrian refugees receive monthly food e-vouchers valued at JOD 23 (USD 32) per person per month, redeemable at in-camps contracted shops and facilitated through blockchain and iris-scan technologies. Except in Mafrq governorate where refugees receive food e-vouchers, refugees in host communities receive unrestricted cash redeemable through 115 ATMs, at over 200 contracted shops, or both. Households classified as “extremely vulnerable” to food insecurity receive JOD 23 (USD 32) per person, per month and households classified as “vulnerable” to food insecurity receive JOD 15 (USD21) per person, per month.

In response to COVID19 outbreak, the WFP Jordan is proactively taking measures to ensure that WFP beneficiaries continue to receive assistance and are appropriately shielded from the effects of COVID19 and associated national measures to limit its spread. To this end, WFP Jordan has introduced modifications to its systems and processes to align to the quickly changing context. Similarly, WFP Jordan has adapted its routine process monitoring and introduced remote monitoring. This report provides the first monitoring findings and serves to inform decision-making of key stakeholders. This report includes findings drawn from a beneficiary contact monitoring (BCM) exercise led by the WFP Jordan Monitoring and Evaluation (M&E) Unit, an analysis of assistance redemption and utilization led by the WFP Jordan Business Analysis Unit (BAU), and analysis of complaints and feedback data led by the WFP Jordan Accountability to Affected Populations (AAP) unit. The findings presented here focus primarily on data collected and analyzed between March 31, 2020 and April 8, 2020.

Introduction - Country Timeline of Events

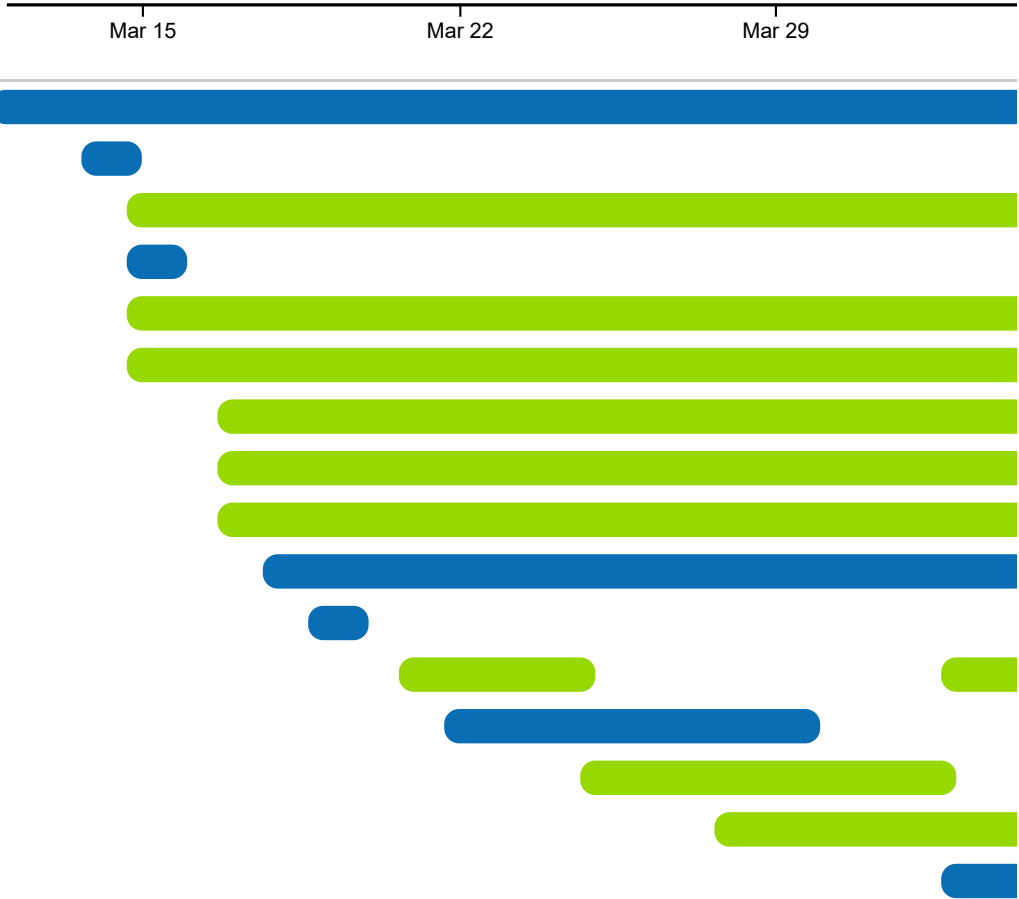
As of April 13th, the Kingdom of Jordan has 391 confirmed cases of COVID19. Since it's first confirmed case on March 3rd, the Government of the Kingdom of Jordan has taken a number of measures to prevent the spread of the disease. Measures include the suspension of educational institutions, banning of public gatherings, and closure of cafes and restaurants, initiated on March 15th to the suspension of international flights and public transportation on March 17th. WFP Jordan has additionally taken measures in response to the outbreak, including through providing an early reload of April assistance to households in camps and communities. WFP has pre-positioned dry-food stock in camps and has provided hand sanitizer and hygiene trainings to WFP-contracted shops. The graph to the right provides a timeline of the major COVID19-related events in the Kingdom of Jordan.

Number of Confirmed Cases by Date



● Government ● WFP

- Establishment of Crisis Management Team
- Business Continuity Plan Prepared
- Closure of Cafes and Restaurants
- Postponement of Household Data Collection
- Suspension of Educational Institutions
- Suspension of Public Events and Gatherings
- Closure of Public Institutions and Private Sector
- Suspension of International Flights
- Suspension of Public Transportation
- Staff Begin Teleworking
- Early Reload of April Assistance in Communities
- Lockdown Instituted Restricting All Movement
- Early Reload of April Assistance in Camps
- Curfew Instituted Restricting Movement 6pm - 10am
- Home Delivery Services Launched
- Remote Monitoring Exercises Undertaken



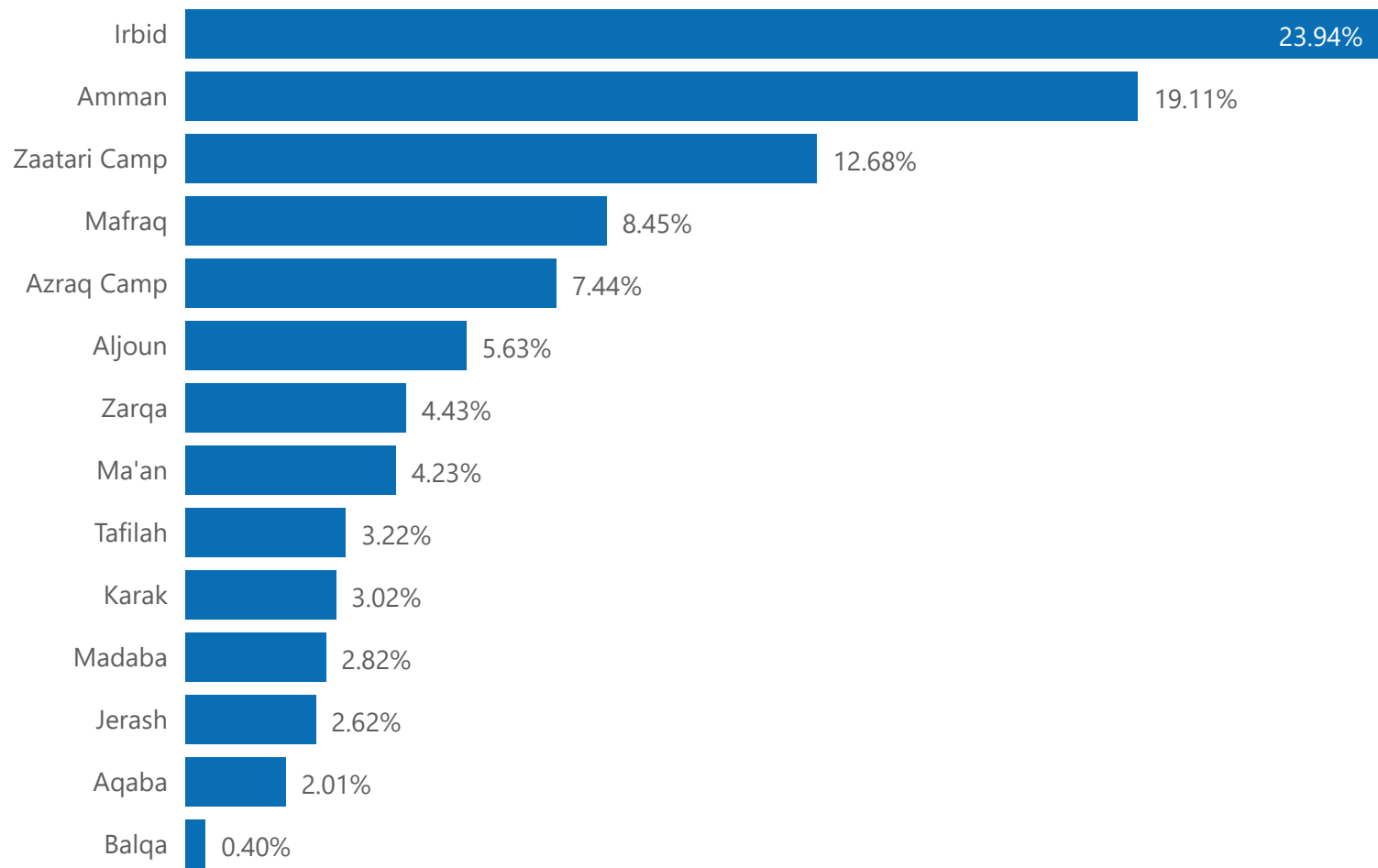
Introduction - Beneficiary Contact Monitoring

From April 1st to April 6th, the WFP Jordan M&E Unit, working closely with the Mafraq and Amman Field Offices, conducted a Beneficiary Contact Monitoring (BCM) exercise, with the goal of capturing beneficiary experiences related to COVID19 and the associated WFP and Governmental responses. Many of the findings that follow are drawn from this exercise. The BCM was conducted as a phone survey, administered to 499 households across 12 governorates and 2 camps. The households were selected through random sampling of beneficiary households considered "active" as of March 31st. The chart to the right highlights the relative proportion of households interviewed across each of the governorates and camps covered by WFP Jordan. The survey was conducted by 13 enumerators with surveys taking 15 - 20 minutes to complete.

499

Total Number of Surveys

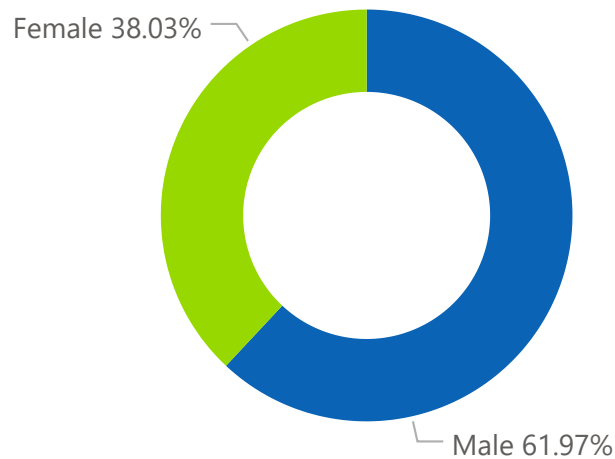
Proportion of Surveys by Governorate (n=499)



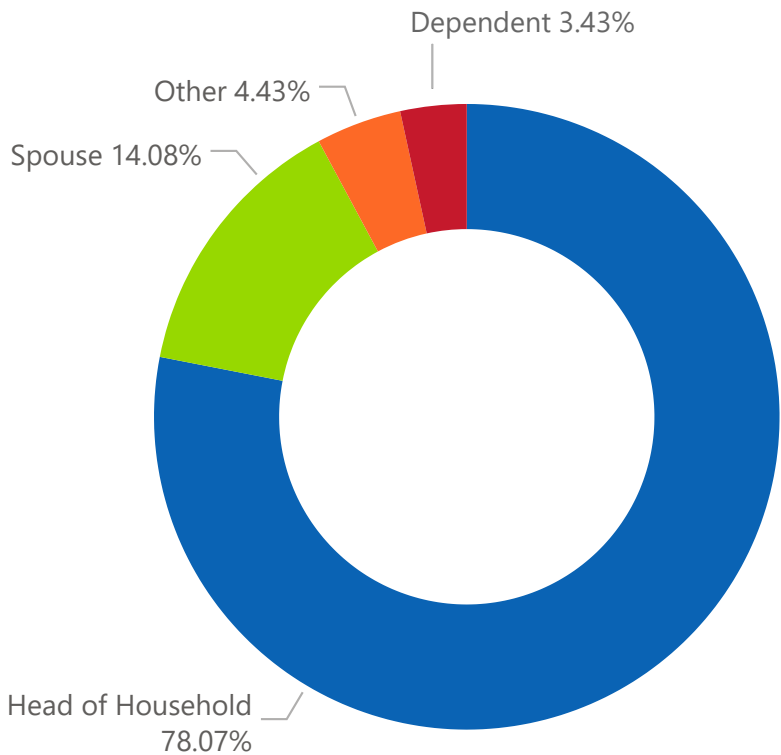
Introduction - Beneficiary Contact Monitoring (cont.)

The BCM survey was administered to respondents above the age of 18 who consented to participation in the survey. Out of the 499 households surveyed, 62% of the respondents were male and 38% percent were female. The median age of the respondent was 38 years. The majority of the respondents were heads of their households (78%), while 14% of respondents were spouses of the head of household. The median household size included 5 members. Many of the findings that follow are drawn from this BCM exercise..

What is the sex of the respondent?
(n=497)



What is the respondent's role in household? (n=497)



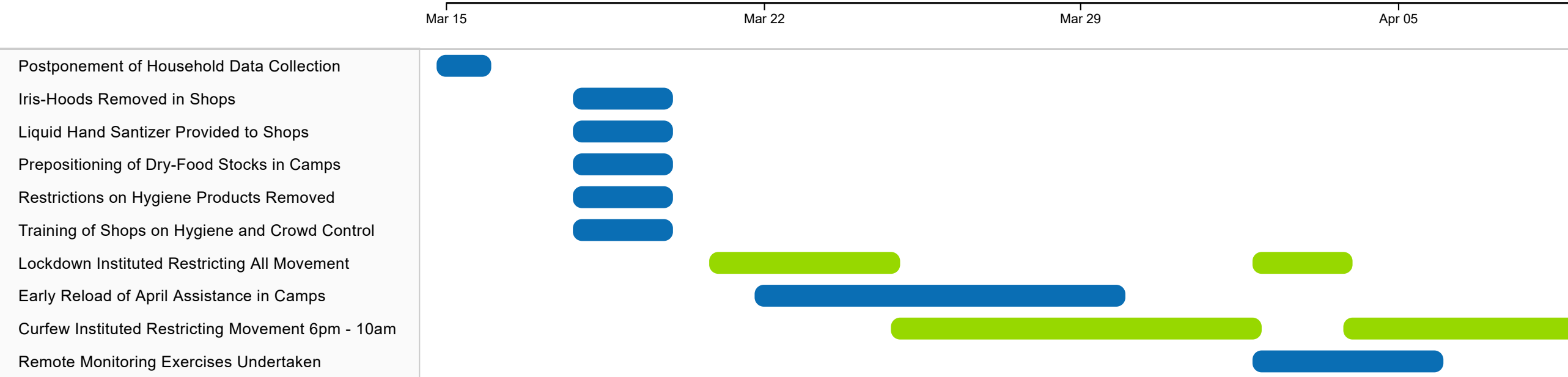
38
Median age of the
respondent? (n=497)

5
Median household size
of the respondent?
(n=497)

Section I - Analysis of Camps

Camp Timeline of Events

● Government ● WFP





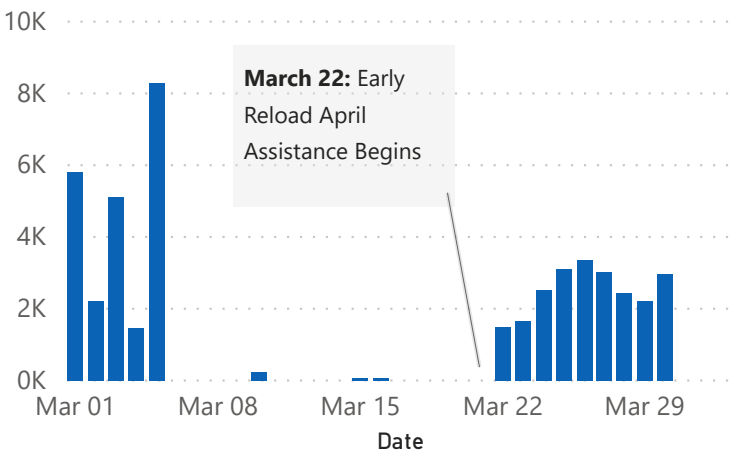
Camp Reload and Use Information

The main April reload for the camps was made from March 22nd to March 30th. As depicted in the graph, camp redemption pattern was not so different from the previous months possibly because the camp shops remained open during the curfew time.

2.46M

Value of Reloads Since March 22, 2020 (JOD)

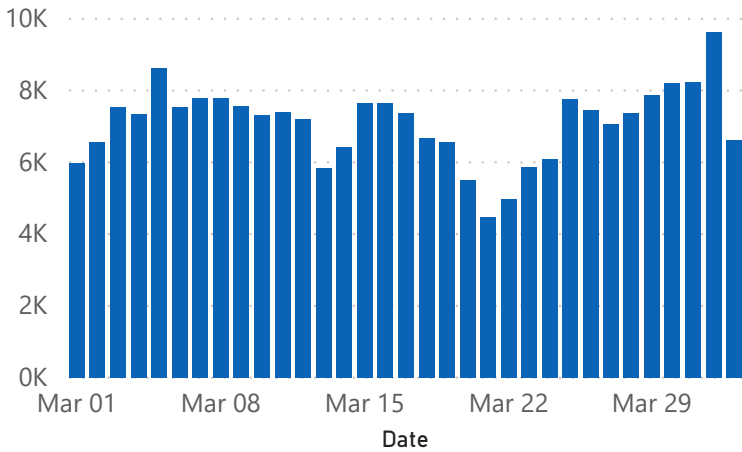
Reload Cases by Date



Reload Amount by Date (JOD)



Purchases Cases by Date



Purchase Amount by Date (JOD)



预览已结束，完整报告链接和二维码如下：

https://www.yunbaogao.cn/report/index/report?reportId=5_3824

