

R4 Rural Resilience Initiative

ANNUAL REPORT

JANUARY - DECEMBER

2019



Cover: Farmers from the Moatize district in Tete Province, Mozambique participate in a focus group activity conducted in preparation for the Green Climate Fund (GCF) project proposal, approved in November 2019.

WFP/Mathieu Dubreuil

Contents

Acronyms	3
Zimbabwe: Marching towards starvation	7
Executive Summary	8
Foreword	10
The R4 Rural Resilience Initiative	11
Background	11
The R4 model	11
Project Status	13
Ethiopia	14
Senegal	18
Malawi	22
Zambia	27
Kenya	32
Zimbabwe	38
Burkina Faso	43
Mozambique	46
The Risk Transfer Component	50
Microinsurance at WFP	51
Monitoring, Evaluation, and Learning (MEL)	55
Key Findings and Recommendations	56
Where are we and where are we going?	63
Looking ahead	65
Annex 1. Metrics from the Field	67
Annex 2. Rural Resilience Event Series	73
Annex 3. R4 Achievements	75
Annex 4. Media Citations and Resources	76
Annex 5. R4 Partners and Institutional Roles	82
Annex 6. Donor contributions to R4	87

Figures

Figure 1.	R4 Countries Map	6
Figure 2.	R4 achievements	9
Figure 3.	R4 achievements by indicator	13
Figure 4.	Ethiopia 2019 seasonal calendar	16
Figure 5.	Senegal 2019 seasonal calendar	20
Figure 6.	Malawi 2019 seasonal calendar	24
Figure 7.	Zambia 2019 seasonal calendar	29
Figure 8.	R4 progress in Kenya, Kitui county (2017-2019)	34
Figure 9.	Kenya 2019 seasonal calendar	35
Figure 10.	Zimbabwe 2019 seasonal calendar	40
Figure 11.	Burkina Faso 2019 seasonal calendar	45
Figure 12.	Mozambique 2019 seasonal calendar	48
Figure 13.	Calendar of rainy seasons in R4 countries	51
Figure 14.	Timeline of M&E surveys or analysis conducted in 2019	56
Figure 15.	Growth Ratio indicator in R4 countries	57
Figure 16.	Promptness of Claims Settlement indicator in R4 countries	58
Figure 17.	Consumer Protection Investment Ratio indicator in R4 countries	59
Figure 18.	Utility Ratio indicator in R4 countries	59
Figure 19.	Reported use of payout in Kenya	60

Tables

Table 1.	Resilience beneficiaries by activity	24
-----------------	--------------------------------------	----

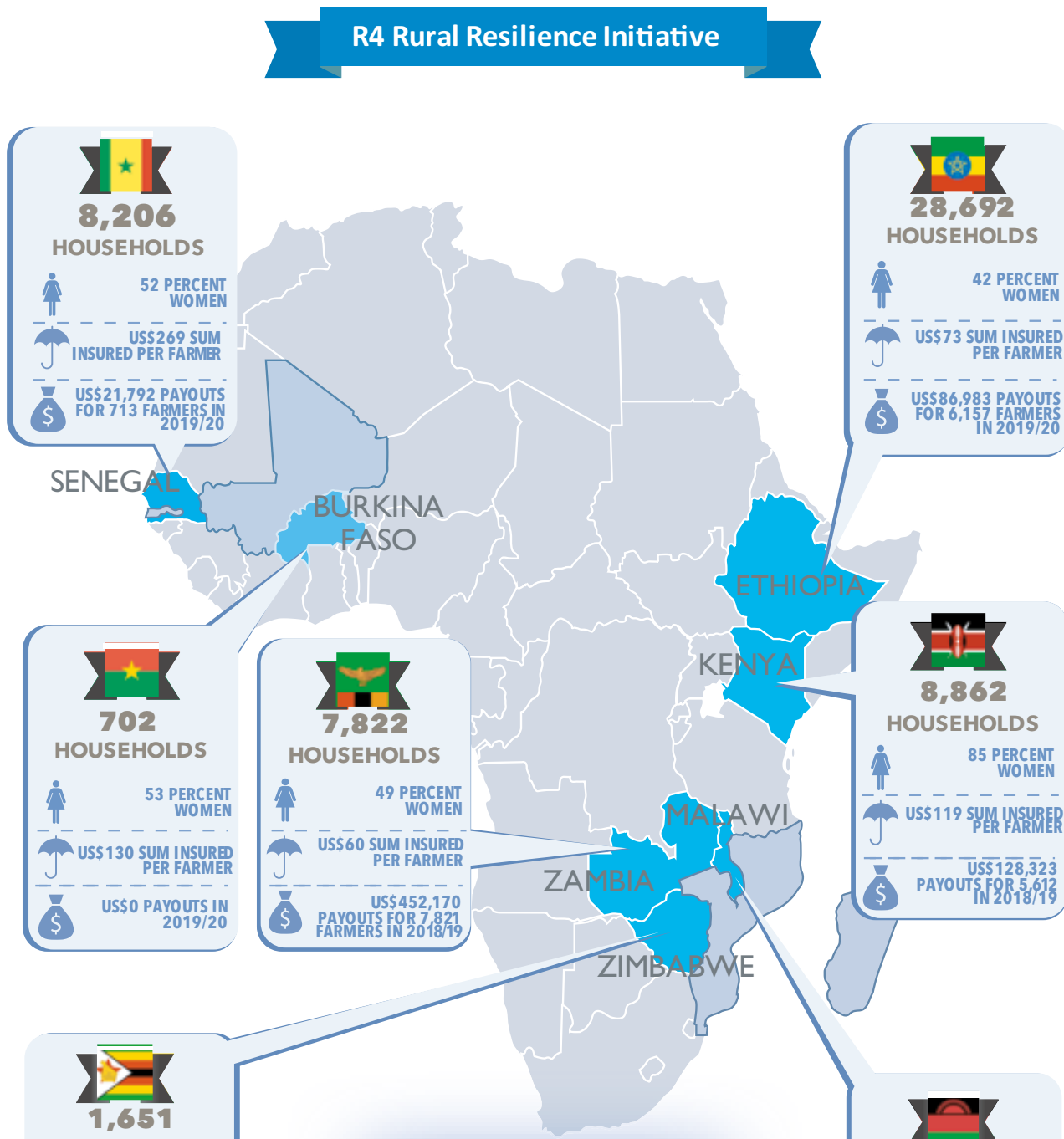
Acronyms

ADRA	Adventist Development and Relief Agency
AIC	Africa Insurance Company
ANACIM	Agence Nationale pour l'Aviation Civile et de la Météorologie
ANCAR	Agence Nationale de Conseil Agricole et Rural
ARC	African Risk Capacity
AQZ	Aquaculture Zimbabwe
AYII	Area Yield Index Insurance
ASALs	Arid and Semi-arid Lands
ASAP2	Adaptation for Smallholder Agriculture Programme
BCM	Beneficiary Contact Monitoring
BMZ	The Federal Ministry of Economic Cooperation and Development
CA	Conservation Agriculture
CASU	Conservation Agriculture Scale Up Project
CBPP	Community-based Participatory Planning
CIMMYT	International Centre for Maize and Wheat Improvement
CNAAS	Compagnie Nationale d'Assurance Agricole du Sénégal
CO	Country Office
CSA	Climate Smart Agriculture
CSP	Country Strategic Plans
DAPP	Development Aid from People to People
DCCMS	Department of Climate Change and Meteorological Services
DECSI	Dedebit Credit and Savings Institution
DFID	UK Department for International Development
DMMU	Disaster Management and Mitigation Unit
DoDMA	Department of Disaster Management Affairs
EbA	Ecosystem-based Adaptation
EIG	Economic Interest Group
FAO	Food and Agriculture Organisation
FbF	Forecast-based Finance
FEWS NET	Famine Early Warning Systems Network
FFA	Food Assistance for Assets
FGD	Focus Group Discussion
FHH	female-headed household
FICA	Government of Flanders International Cooperation Agency
FISD	Foundation for Irrigation and Sustainable Development

GALS	Gender Active Learning System
GCF	Green Climate Fund
GFCS	Global Framework for Climate Services
HARITA	Horn of Africa Risk Transfer for Adaptation
HGSF	Home-Grown School Feeding
IDPs	Internationally Displaced Persons
IFAD	International Fund for Agricultural Development
IGA	Income Generating Activity
INAM	Mozambique National Meteorology Institute
INGC	National Institute of Disaster Management
IRI	International Research Institute for Climate and Society
ISD	Institute for Sustainable Development
LSA	Lean Season Assistance
KCEP-CRAL	Kenya Cereal Enhancement Programme- Climate Resilient Agricultural Livelihoods Window
KfW	German state-owned development bank
KOICA	Korea International Cooperation Agency
KPI	Key Performance Indicators
MAL	Ministry of Agriculture and Livestock
MAER	Ministry of Agriculture and Rural Equipment
MASA	Ministry of Agriculture and Food Security
MEL	monitoring, evaluation and learning
MITADER	Ministry of Land, Environment, and Rural Development
MLAWCRR	Ministry of Lands, Agriculture, Water, Climate and Rural Resettlement
MoA	Ministry of Agriculture
MoALF&I	Ministry of Agriculture, Livestock, Fisheries, and Irrigation
MoFEP&D	Ministry of Finance, Economic Planning and Development
NbS	Nature-based Solutions
NDMA	National Drought Management Authority
NDP	National Development Plan
NMA	Ethiopian National Meteorological Agency
NORAD	Norwegian Ministry of Foreign Affairs
OA	Oxfam America
OIC	Oromia Insurance Company
ORDA	Organization for Rehabilitation and Development in Amhara
PADAER	Programme d'Accélération de la Cadence de l'Agriculture Sénégalaise Développement Agricole et à l'Entreprenariat Rural
P2RS	Multinational programme to build resilience to food and nutrition insecurity in The Sahel
PICS	Purdue Improved Crop Storage (PICS)

PICSA	Participatory Integrated Climate Services for Agriculture
PRSP	Department of Poverty Reduction and Social Protection
PSNP	Productive Safety Net Program
PSP	Participatory Scenario Planning
REST	Relief Society of Tigray
RUSACCO	Rural Savings and Credit Cooperative
RWH	Rain Water Harvesting Systems
SAMS	Smallholder Agricultural Market Support
SDC	Swiss Agency for Development and Cooperation
SfC	Saving for Change
SIDA	Swedish International Development Cooperation Agency
SIIE	Satellite Index for Pastoralists in Ethiopia
SNV	The Netherlands Development Organisation
SNNRP	Southern Nations, Nationalities, and People's Region
ToT	Trainings of Trainers
USAID	United States Agency for International Development
WAM	Water Access and Water Management
WII	Weather Index Insurance
WFP	World Food Programme
VESA	Village Economic and Social Associations
VFM	Virtual Farmer's Market
VFZ	Vision Fund Zambia
VSLG	Village Savings and Lending Group
ZMD	Zambia Meteorological Department

FIGURE 1. R4 Countries Map



预览已结束，完整报告链接和二维码如下：

https://www.yunbaogao.cn/report/index/report?reportId=5_3762

