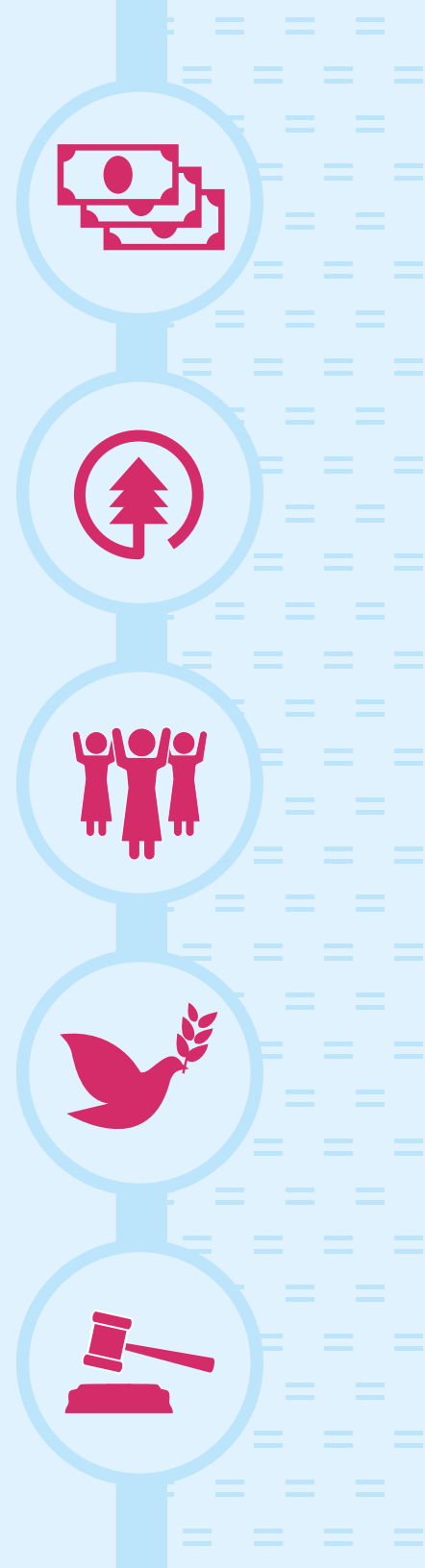


RESEARCH SERIES SUMMARY

SUPPORTING WOMEN'S EMPOWERMENT AND GENDER EQUALITY IN FRAGILE STATES:

Guinea, Lebanon and Sudan



ABOUT THE FUND

Most [Official Development Assistance] to gender equality in fragile situations goes to education and health; financing gaps remain in the peace and security sector and in economic and productive sectors. Integrating a gender perspective ... does produce better peacebuilding and statebuilding outcomes.

It makes state institutions more inclusive, enhances state legitimacy, fosters justice and security, and helps to unlock women's potential to contribute to economic recovery Donors could also further invest in dedicated gender equality programmes.

OECD, States of Fragility: Meeting Post-2015 Ambitions

The FGE has awarded grants to 50 programmes in fragile States since 2009, including:

27 Political empowerment programmes

23 Economic empowerment programmes

UN Women's Fund for Gender Equality (FGE) is a global grant-making fund dedicated to the economic and political empowerment of women worldwide.

Since 2009, the FGE has delivered US\$ 64 million in competitively awarded grants to 120 programmes in 80 countries.

Guided by UN Women's mandate, the FGE supports women-led civil society programmes and their strategic partners to advance women's rights in line with national development priorities. Its grant-making focuses on two thematic areas:

- **Women's economic empowerment:** to increase

women's access to and control over land, technology, credit, natural capital, social protection and economic decision-making

- **Women's political empowerment:** to support women of all ages to take on leadership roles and participate more fully in all aspects of political and public life

In just seven years, FGE grantees have reached over 10 million women, men and youth worldwide. This includes over 2 million living in fragile States who have directly benefited from FGE-supported programmes.

Read more about the Fund's impact at www.unwomen.org/fge.

ABOUT THE INITIATIVE

1,086

adult women in Guinea, Lebanon and Sudan participated in the FGE's perceptions survey, conducted by area-based research teams for this initiative.

In 2014, the FGE and the Government of Japan launched a knowledge initiative to explore good practices for strengthening women's economic empowerment and resilience in fragile settings.

Focusing on four economic empowerment programmes awarded grants in 2012—including one in Guinea, two in Lebanon and one in Sudan—the initiative aimed to:

- Capture women's perceptions of the local economic barriers and opportunities
- Share lessons learned and good practices for strengthening resilience

- Offer recommendations to help strengthen women's empowerment programming

Using grantee case studies in Guinea, Lebanon and Sudan as entry points for knowledge gathering, the FGE has produced a series of country briefs that capture findings from the initiative's research.

Review the FGE's three full-length research briefs and watch the related videos at www.unwomen.org/fge.

WHY FRAGILE SETTINGS?

43%

of the world's people who live in severe poverty today are located in fragile States. Among them, women, youth and children account for over 70 percent.

Fragility is linked to conflict-affected settings as well as those affected by climate change, health epidemics and pandemics, forced migration, mass displacement, breakdown of institutions and other shocks and disasters.

As the international community takes steps to achieve an ambitious and integrated 2030 Agenda, it must recognize the nexus between fragility and poverty as a complex challenge in need of real solutions.

According to the OECD, some 43 percent of people living in severe poverty today are located in the world's 50 most fragile States.

Research produced for this initiative suggests that women, youth and children together accounts for account for over 70 percent of them.

To help draw attention to the innovative strategies women and women-led civil society are using to promote resilience and realize empowerment in fragile settings, the FGE has undertaken this research based on grantee case studies in Guinea, Lebanon and Sudan.

WOMEN'S EMPOWERMENT FRAMEWORK

To make gender equality and women's empowerment programming in fragile States smarter and more targeted to women's real needs, the FGE research has defined a framework for empowerment based on four components:

● PRODUCTIVE RESOURCES

activities that improve access and control over the inputs needed for sustainable income generation and safe, secure livelihoods.

● INSTITUTIONAL RELATIONS

activities that strengthen relations and commitments between individuals and the formal and informal institutions that shape their lives and opportunities.

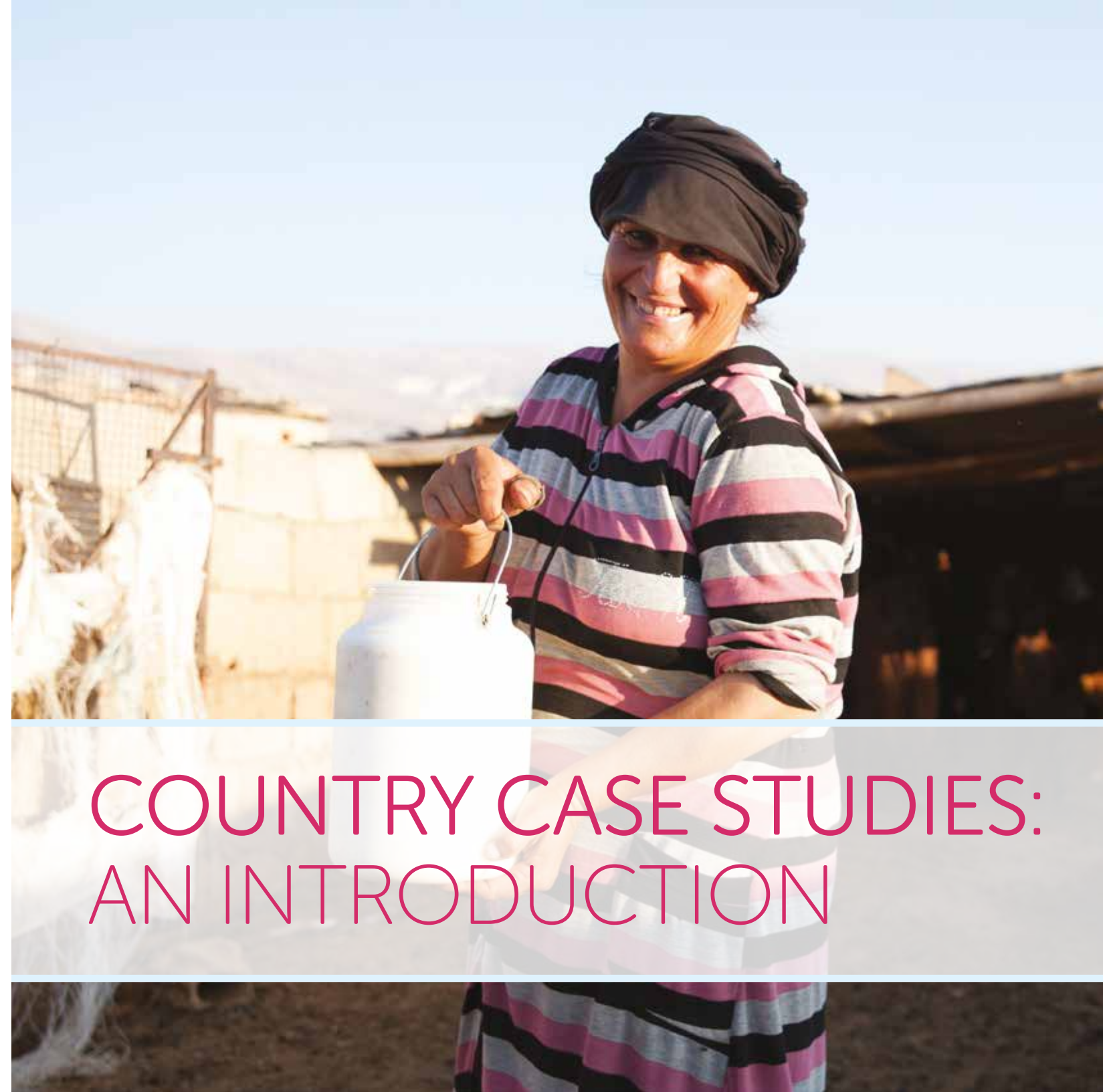
● PERSONAL RESOURCES

activities that increase and expand life skills, knowledge and information, social capital, and opportunities for confidence, agency and collective action.

● INTERPERSONAL RELATIONS

activities that improve and expand relationships between individuals and communities, and help shift norms and expectations about the roles people can play in society.

Together, improvements in these four areas can increase women's influence over the economic structures and decisions that shape their lives.



COUNTRY CASE STUDIES: AN INTRODUCTION



GUINEA

PREM (PARTENARIAT - RECHERCHES - ENVIRONNEMENT - MÉDIAS)

322

direct beneficiaries

230
Women

92
Men

1,505

total beneficiaries reached.

1,183

indirect beneficiaries

297
Men

893
Women

PREM received an FGE empowerment grant in 2012 to implement a programme on renewable energy technologies for sustainable livelihoods with women fishers, farmers and dried food producers in Guinea's remote Tristão Islands.

PREM helped organize and register four women's cooperatives with Government offices on the mainland. It also coordinated a locally-owned training programme, teaching over

300 Tristão Islands women to plant, grow, harvest, clean, produce and package goods made from the highly nutritious moringa plant.

By installing and training local women in the use of solar polytunnel dryers, local communities have gained direct access to an efficient and cost-effective energy source that enables them to transform moringa, fish, fruits and nuts into marketable dried food products.

Adding to the benefits of 25,000 new moringa trees planted by local women since 2013, PREM's installation of polytunnel dryers has helped reduce local greenhouse gas emissions by an estimated 40 tonnes per year.

Read the FGE's full-length gender research brief on Guinea at www.unwomen.org/fge.



AMEL & SPNL

(AMEL ASSOCIATION & SOCIETY FOR THE PROTECTION OF NATURE IN LEBANON)



Amel and SPNL are two Beirut-based organizations that received FGE empowerment grants in 2012. Both organizations have implemented programmes to help improve sustainable livelihoods, market access, community leadership and resource management decision-making for rural and refugee women in Lebanon.

Amel Association’s MENNA project supports a nation-wide network of rural and refugee women with new market opportunities, improved

business skills and strengthened financial independence.

The project launched its first permanent MENNA shop in Beirut in 2015, giving women producers a year-round space to sell their goods to the public.

SPNL’s *Hima* women project supports rural women in four municipalities to revive the traditional *Hima* model of community-based resource management, in which women

have long played key leadership and decision-making roles.

By sensitizing municipal authorities to the importance of gender-inclusive governance, the programme enables rural women to participate more fully in all aspects of community life and decision-making.

Read more about both programmes in the FGE’s full-length research brief on Lebanon at: www.unwomen.org/fge.



BADYA CENTRE FOR INTEGRATED DEVELOPMENT SERVICES



Badya Centre received an FGE grant in 2012 to implement a gender-integrated livelihoods and peacebuilding programme with rural and internally displaced (IDP) communities in Sudan’s southern-most state: South Kordofan.

Through literacy and vocational skills training and community-building events, the programme has helped strengthen social cohesion and

cooperative income generation strategies between IDP and host communities and with local authorities.

By providing productive inputs such as seeds, farming equipment, fuel and access to credit, the programme enabled IDP and host community women and men to improve their crop yields and pilot good practices for gender-inclusive farming and livestock practices.

Badya Centre helped launch the area’s first ever football for peace tournament in 2014, bringing over 500 community members and local authorities together in celebration of shared goals.

Read the FGE’s full-length gender research brief on Sudan at www.unwomen.org/fge.

云报告

<https://www.yunbaogao.cn>

预览已结束，完整报告链接和二维码如下：

https://www.yunbaogao.cn/report/index/report?reportId=5_22109

云报告

<https://www.yunbaogao.cn>