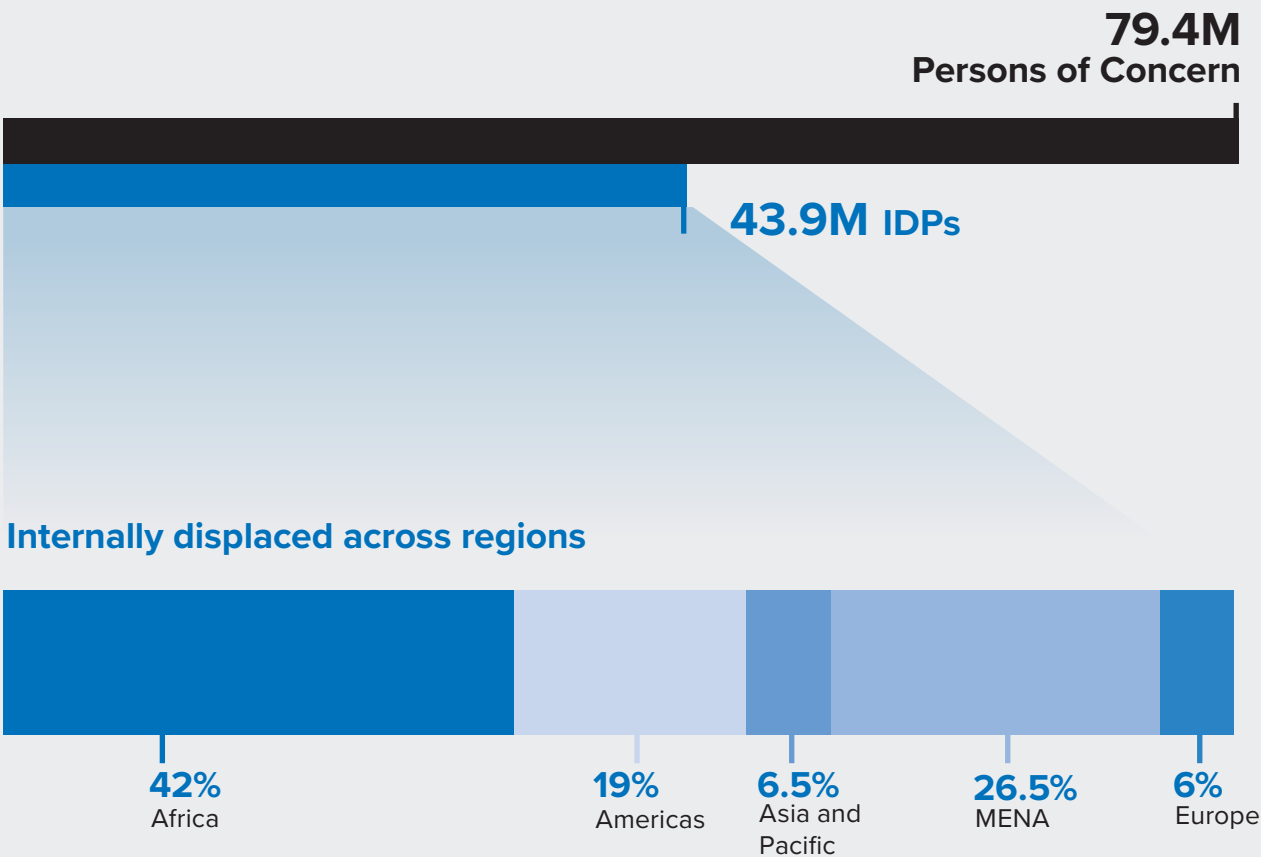


UNHCR'S INITIATIVE ON INTERNAL DISPLACEMENT

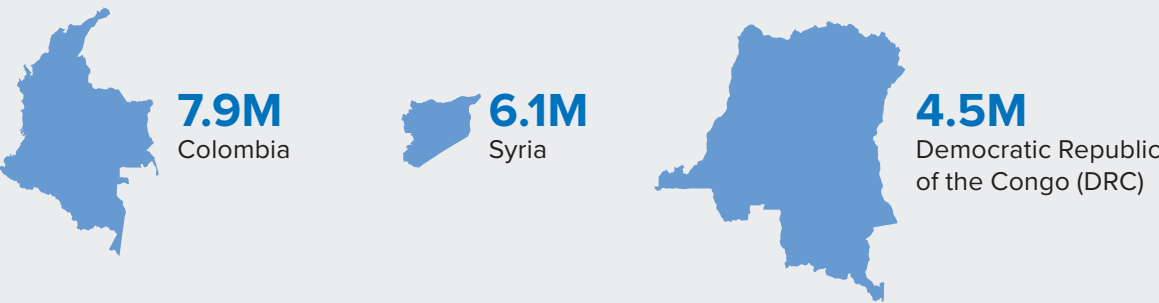
2020 – 2021



Population figures at a glance



42% of all IDPs are in three countries



SOURCE: UNHCR MID-YEAR TRENDS 2019

Stepped-up engagement in situations of internal displacement

In setting out his Strategic Directions 2017-2021, the High Commissioner committed to repositioning UNHCR to be more decisive, predictable and effective in situations of internal displacement, working alongside States and partners in planning and delivering a protection and solutions driven response.

The updated Policy on [UNHCR's Engagement in Situations of Internal Displacement](#) – issued in September 2019 - is a clear example of UNHCR's

commitment to strengthen its preparedness, operational delivery, coordination leadership and the search for solutions within the inter-agency framework. Specific organizational keystones and enablers are articulated in the Policy and elaborated in its accompanying Guidance Package.

To ensure a consistent organization-wide approach, compliance with the 2019 IDP Policy has been made mandatory.

Operationalizing UNHCR's commitments: the IDP-Initiative

As a complement to agency-wide efforts across all its IDP operations, UNHCR's engagement in internal displacement will be further concretized, supported and driven forward on a focused and demonstrative basis in nine target operations, which span the internal displacement spectrum from emergency preparedness, to response, and to solutions.

The target countries are drawn from geographically diverse situations of internal displacement and include: Ethiopia, South Sudan, Sudan, Burkina Faso, Democratic Republic of the Congo (DRC), Iraq, Afghanistan, Ukraine and Colombia.

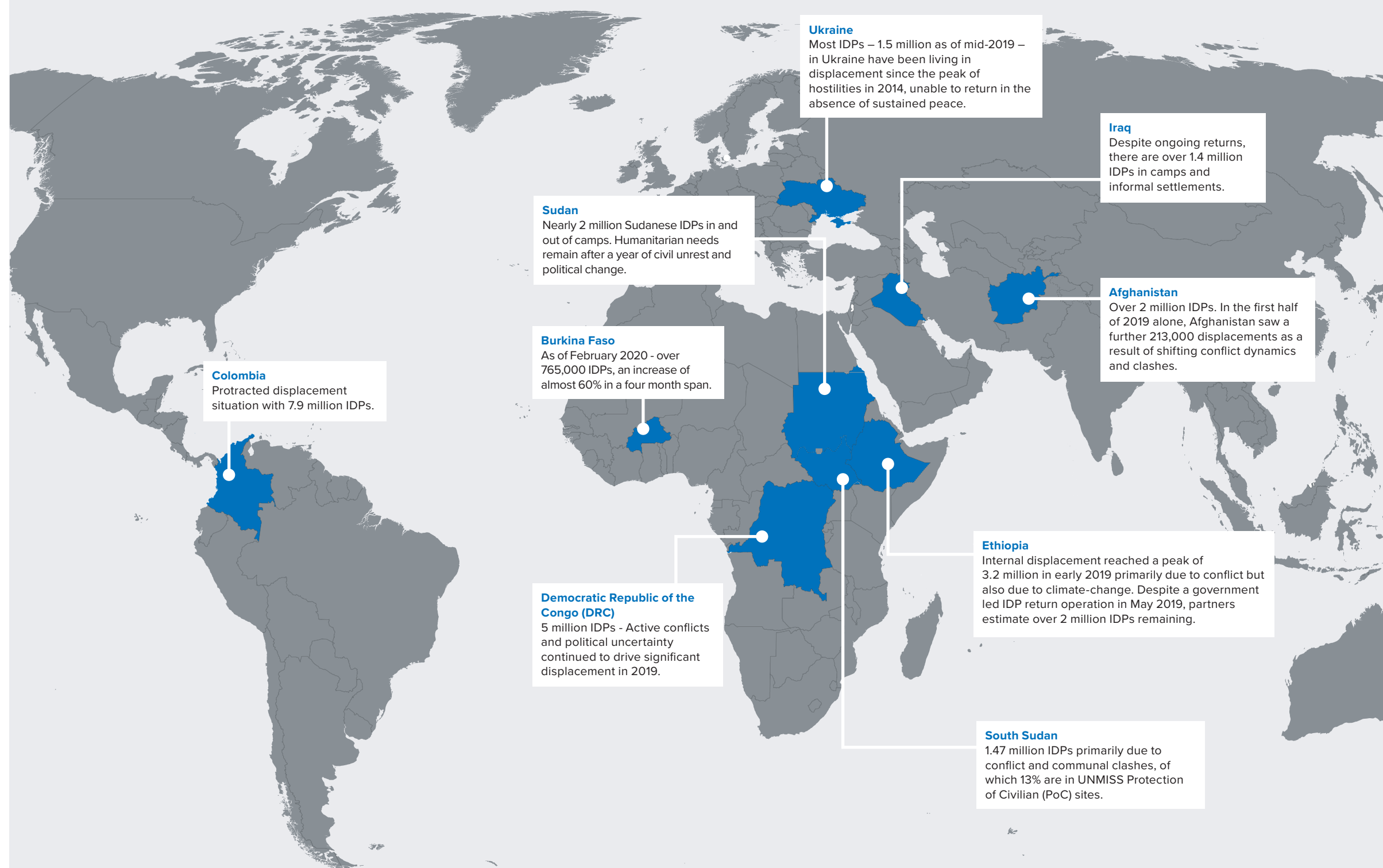
The main objectives of the IDP-initiative are to:

1. Generate examples of good practices to inform the continued operationalization of the IDP Policy.
2. Contribute to heightened visibility and advocacy on the impact of internal displacement on affected populations.
3. Inform resource mobilization strategies and equitable resource allocation.
4. Facilitate focused support to the nine target operations on specific thematic, strategic and operational issues.

IDP-Initiative Target Operations

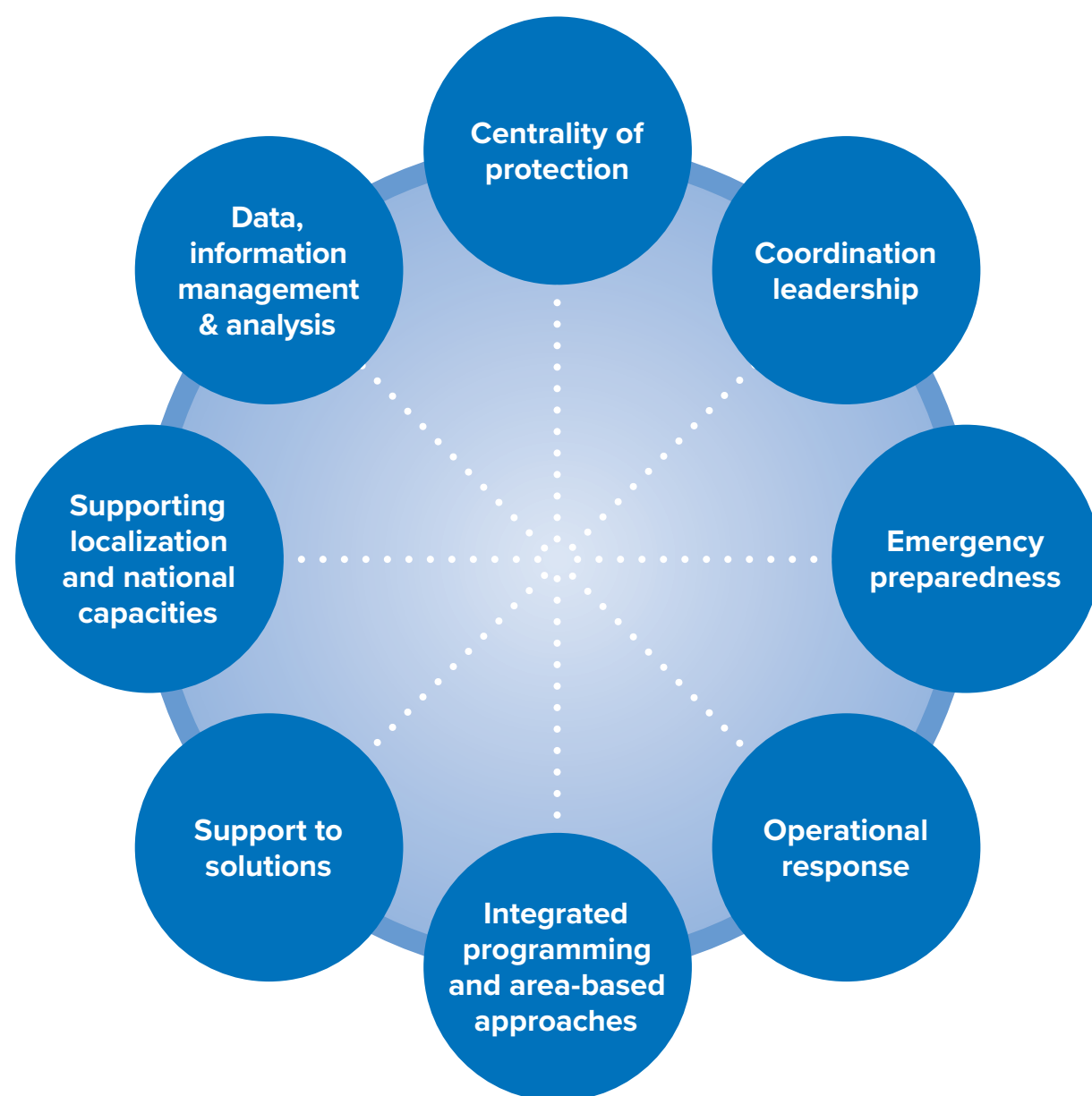
UNHCR's IDP Policy will be implemented across all its field operations. The selection of target operations for the IDP-Initiative is additional to demonstrate a concerted IDP step-up. These operations have been carefully selected taking into account (i) balanced representation among operations at various stages of the displacement cycle, from new or escalating emergencies to protracted and post-conflict (ii) magnitude of displacement (iii) nature of displacement (iv) the size, effectiveness and coherence of UNHCR's operational and cluster-led response and (v) the capacity of operations to exhibit practices in specific thematic areas, and to demonstrate what a stepped-up approach tangibly entails.

Individually each operation will prioritize the operationalization of the keystones inscribed in the updated IDP Policy. Collectively, they will demonstrate the scope of UNHCR's engagement across the varied dimensions of its work.



Keystones

UNHCR's stepped-up engagement on internal displacement will be supported and showcased in the nine target operations in relation to the keystones articulated in the IDP Policy. Each of the keystones is being put into practice in the nine target operations, while some keystones will be prominently highlighted in particular operations, depending on the operational context.



Centrality of protection

As in all IDP operations, UNHCR advises and supports Resident/Humanitarian Coordinators and UN/Humanitarian Country Teams in the development of overarching protection and solutions strategies, relying upon evidence-based protection and needs analyses developed in cooperation with stakeholders prior to and after cluster activation. Representatives participate in UN/Humanitarian Country Teams, to help ensure that protection is placed at the centre of the humanitarian response (across the IDP spectrum), and guide humanitarian action, advocacy and engagement. As Protection Cluster lead, UNHCR will continue to promote protection mainstreaming across all clusters, thereby ensuring that inter-agency preparedness and response is shaped by protection considerations. These actions will ensure that all activities take account of age, gender and diversity considerations, as well as the existing skills and capacities of affected populations.

Coordination leadership

When clusters are established UNHCR will step up to its responsibilities in accordance with IASC commitments and accountabilities. UNHCR will strengthen its preparedness, response and solutions interventions, through dedicated cluster coordinators and information management support, underpinned by a robust operational response in each of these sectors. Dedicated efforts to strengthen internal tri-cluster synergies, including through the mainstreaming of protection across all sectors, and to bolster UNHCR coordination capacities, are ongoing at global level and across all IDP operations. These will be advanced in IDP-Initiative target operations in particular.

Emergency preparedness

To ensure better preparedness for emergencies involving internal displacement, both in its operational role and as tri-Cluster Lead Agency, UNHCR is finalising an internal Preparedness Package for IDP Emergencies (PPIE). In line with this tool, UNHCR will ensure strengthened participation in inter-agency preparedness measures, contribute to UN system-wide, and government-led or supported, risk assessment and early warning mechanisms, and continue to support local and national capacity to prepare for, prevent and mitigate displacement risks. UNHCR will consistently embed protection considerations in the various steps of agency and inter-agency preparedness efforts, and will contribute to scenario-based contingency planning within its shelter and settlements, and camp/site coordination and management, areas of expertise.

Operational response

UNHCR is committed to strengthening operational delivery in internal displacement situations in line with its leadership and coordination responsibilities related to protection, shelter and camp coordination and camp management, and ensuring its contribution as Provider of Last Resort. UNHCR will bring experience in community-based protection approaches to prioritize interventions for prevention, response and mitigation of the most urgent and immediate protection risks and needs, including engagement with the relevant lead agencies, to combat sexual and gender-based violence (SGBV) and promote child protection. UNHCR will continue to engage in inter-agency and system-wide efforts related to protection against sexual exploitation and abuse (PSEA). UNHCR will also apply and systematically integrate its longstanding expertise in shelter, and camp/site management into its work with IDPs.



Integrated programming and area-based approaches

A number of regions are increasingly affected by overlapping refugee movements, internal displacement and statelessness, thereby necessitating a strategic and joined-up approach to forced displacement that UNHCR is uniquely positioned to provide. UNHCR has initiated measures for system-wide integrated programming, which will maximize opportunities for operations to respond through area-based approaches that are inclusive of all population groups in an operational context, including situations where populations of concern are co-located (e.g. IDPs, refugees and asylum seekers, returning refugees and IDPs), and/or with host communities. Programmes will define a mutually supportive and complementary set of actions for UNHCR within multi-stakeholder plans.

Support to solutions

UNHCR will continue to prioritize actions that contribute to the conditions conducive for safe, dignified and comprehensive solutions. In line with the 2030 Agenda and the principle of “leaving no-one behind,” UNHCR’s work with partners to secure the inclusion of IDPs in national services, social safety nets, and local and national development plans will continue. UNHCR will build effective approaches to resilience and solutions that assist IDPs, wider displacement-affected communities and their governments to better manage and overcome the consequences and effects of displacement. In the pursuit of solutions, UNHCR will bolster ongoing contributions to transition strategies that link humanitarian and development action, and activities that build and sustain peace.

Supporting localization and national capacities

In line with 2030 Agenda, UNHCR will support the post-conflict transition to local and national actors to meaningfully take over operational delivery, coordination and monitoring in relation to IDP protection and solutions. This will include multi-year multi-partner strategies to enhance national coordination and response capacity, including technical advice and support for national laws and policies on internal displacement, training and capacity development. UNHCR will contribute to UN/Humanitarian Country Team efforts for the gradual de-activation of clusters in support of government-led coordination arrangements, including in the transition of any IDP sites to governments and/or other agreed approaches that facilitate durable solutions

Data, information management & analysis

With dedicated information management capacity – for each of the clusters it leads/co-leads and for its own operational response – UNHCR will ensure timely and impact-oriented assistance and protection for those displaced and affected. This will be enabled through sound protection monitoring, needs assessments, and analysis conducted, together with partners, including at all stages of internal displacement crises. UNHCR’s new Data Transformation Strategy 2020-2025, envisions strategic partnerships with key data gathering and analysis actors. The data and information generated and analyzed – by UNHCR and its implementing partners, as well as UNHCR-led cluster partners – will support evidence-based planning, response, communications and advocacy for protection, assistance and solutions outcomes, by UNHCR and the rest of the humanitarian community. Data, Identity Management & Analysis (DIMA) units are being established in each Regional Bureau to support Country Operations, including with IDP data.

AFGHANISTAN



© UNHCR/JIM HUYLEBROEK

Almost two-thirds of the 35.5 million population of Afghanistan continue to live in areas directly affected by conflict, population movements and forced displacement. Recurring violence, loss of livelihoods, and limited access to basic services, are further exacerbated by chronic vulnerabilities including exposure to natural hazards.

Based on its long-standing presence in the country and knowledge of affected communities, UNHCR is applying an area-based, whole of community approach, aimed at mitigating protection risks and vulnerabilities of all affected communities while facilitating sustainable solutions including reintegration of refugee returnees and IDPs. In 2020-21 community-based interventions will be further built upon to foster peaceful co-existence with host communities. Operational delivery will be augmented through integrated programming modalities.

UNHCR will continue investing in its leadership of the Protection and Emergency Shelter/ Non-Food Items Clusters in Afghanistan and will facilitate, as a strategic and operational priority, the imperative of championing the centrality of protection and its mainstreaming across humanitarian action.

While UNHCR’s preparedness and response to evolving emergency needs will continue, operational focus will be enabled in 20 priority areas of return and reintegration in Kabul, Parwan, Nangarhar, Laghman, Kandahar, Jawzjan, Balkh, Kunduz, Herat, Bamyán and Daikundi provinces. These will be undertaken through linking communities with government programs, particularly the Afghanistan National Peace and Development Framework and the National Priority Programs, and initiatives undertaken by the World Bank, UN agencies and NGOs. UNHCR’s Comprehensive Refugee Response Framework (CRRF) interventions in Afghanistan will also contribute to solutions to internal displacement.

Partnerships will continue to form the mainstay of UNHCR’s operational response including in areas of shelter and NFI distribution, community-based protection and the promotion of self-reliance and sustainable reintegration. Partnerships for agile protection monitoring will be crucial for updated information on protection and assistance needs to influence impact oriented delivery of assistance.

Financial requirements for IDP activities in 2020:
\$26.8 million

BURKINA FASO



© UNHCR/ROMAIN DESCLOUS

Providing Shelter/NFI and CCCM interventions for displaced families in times of crises is critical to ensure their personal security, self-sufficiency and dignity, as well as to mitigate ever-growing protection risks. Despite the continuing efforts of the authorities to identify new temporary accommodation sites for the provision of humanitarian assistance and protection, a growing number of displaced families are seeking safety in communities and villages which are already limited in resources, and remain in dire need of protection, shelter, non-food items, food, water, education and health.

The deteriorating security situation has severely limited humanitarian access to protection services and assistance for displaced people and host communities. In 2020-21, UNHCR is gearing its programming to ensure that information about the impact on displaced populations in the rapidly changing environment is readily available, through emphasis on agile protection monitoring to identify specific needs, both for advocacy and for the provision of targeted interventions.

UNHCR will continue to partner and strengthen relationships with local authorities, including the Burkinabe Council for Emergency Relief and Rehabilitation (CONASUR), to deliver shelter and core relief items, cash grants and protection activities as well as provide support for civil documentation. UNHCR's support to State capacity to manage displacement, including in and out of sites, will gain further ground in 2020-2021.

UNHCR will renew its emphasis on strategic and operational priorities as the situation evolves, towards strengthened leadership and coordination of protection, shelter, and CCCM sectors, accompanied by robust operational delivery. UNHCR is reinforcing its workforce to support activation and dedicated leadership of the Protection Cluster, Shelter/NFI Cluster and CCCM Working Group.

Upholding the centrality of protection is a core imperative in which UNHCR will ensure further investment, with analysis of available information on target communities' needs, and to influence appropriate protection strategy implementation at the Cluster and Humanitarian Country Team (HCT) level, in support of the Humanitarian Coordinator, while facilitating protection mainstreaming across all sectors.

Operational delivery is being prioritized, as evidenced by the provision of shelter, NFIs and protection programs through a variety of modalities, including community-based approaches, cash-based interventions, and community coordination in formal and informal sites, in close collaboration with the national and local authorities. Resource mobilization for adequate response capacity will be supported through evidence-based advocacy.

Financial requirements for IDP activities in 2020:
\$15.5 million

COLOMBIA



While international attention has shifted from internal displacement, towards the mass arrival of Venezuelans to Colombia, the objectives of the country's peace agreement continue to be pursued in the face of numerous challenges. Key among these are the recent calls for re-armament by certain leaders of the Revolutionary Armed Forces of Colombia (FARC). Protection challenges persist in and around FARC demobilization areas, along the country's border with Venezuela, its southern borders, and the Pacific Coast.

UNHCR leads the Protection Cluster in Colombia coordinating a variety of organisations for a balanced protection oversight and response. In 2020-21, in line with the IDP Policy, UNHCR will enhance its work to deliver integrated 'protection and solutions-oriented' programming, to equitably assist all populations of concern to UNHCR (Venezuelan refugees, IDPs and IDP-returnees, and host communities) through area-based approaches in informal settlements and other settings where they are co-located.

Building on its experience in community engagement, UNHCR's will undertake robust operational delivery, particularly through community-based interventions and strengthened support for solutions. UNHCR will continue to support the solutions processes, in particular in urban informal settlements where populations arriving from Venezuela co-reside.

Protection Cluster partners supported by UNHCR will be encouraged to work together to gear their operational interventions to specific needs through agile protection monitoring for strengthening communities to cope and expand their ability to manage their situations including through access to local services. These efforts among others will also contribute to early warning of conflict and potential displacement triggers.

In order to further its long standing approach towards localization and national capacity building, UNHCR will contribute to responsible transition to government ownership through: (i) provision of guidance and support to State institutions with legal and policy frameworks on prevention, protection and solutions for the displaced population; (ii) promotion of consolidation and transfer of solutions processes and good practices to State institutions, while advocating for enhanced public policy on solutions for IDPs; and (iii) support to institutions created under the Peace Agreement with a focus on victims' participation in truth, justice and reparation processes.

预览已结束，完整报告链接和二维码如下：

https://www.yunbaogao.cn/report/index/report?reportId=5_17630



Financial requirements for IDP activities in 2020:

\$13.5 million