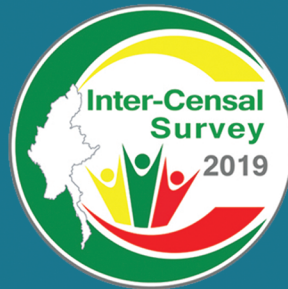
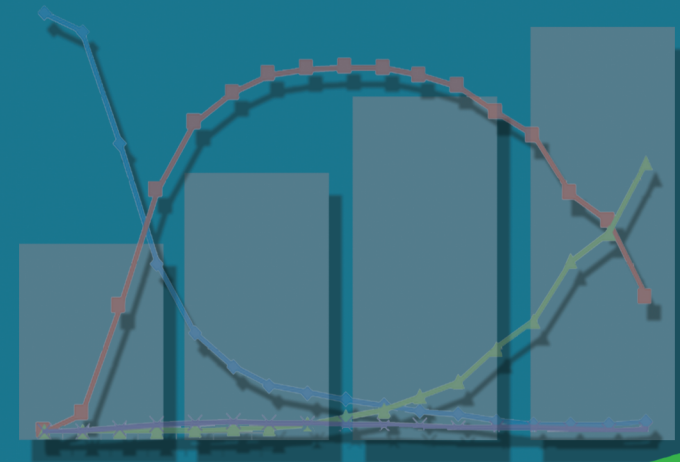
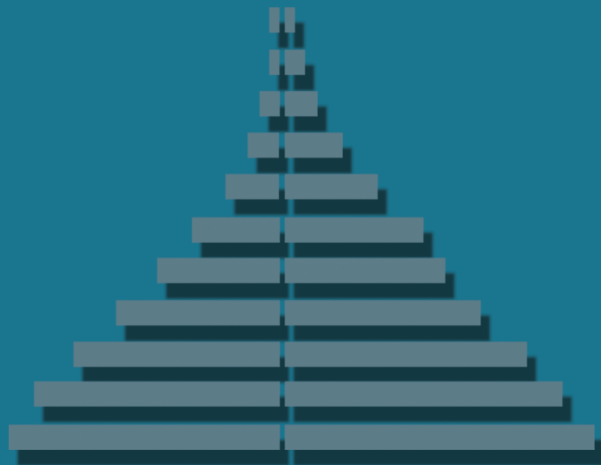




THE REPUBLIC OF THE UNION OF MYANMAR



The 2019 Inter-censal Survey Appendix Tables



The 2019 Inter-censal Survey

The Union Report

For more information contact:

Department of Population

Ministry of Labour, Immigration and Population

Office No. 48

Nay Pyi Taw

Tel: +95 67 431 062

www.dop.gov.mm

December, 2020

List of Statistical Tables

Table Number	Description
Appendix A: Population Characteristics	
Table A-1:	Percent distribution of population by sex, urban and rural areas, 5 years age groups
Table A-2:	Percent distribution of population by sex, sex ratio and urban (%), State/Region and District
Table A-3:	Head of households and mean household size by State/Region and District
Table A-4:	Proportion of population by selected age-groups, dependency ratios and aging index by State/Region and District
Table A-5:	Percent distribution of population by size of the household by State/Region and District
Table A-6:	Percent distribution of population aged 10 years and over by marital status by State/Region and sex
Table A-6a:	Percent distribution of population aged 10 years and over by marital status by State/Region and District
Table A-7:	Percent distribution of population aged 10 years and over by marital status, 5 years age group and sex
Table A-8:	Percent distribution of population by relationship to the head of household by State/Region and sex
Table A-8a:	Percent distribution of population by relationship to the head of household by State/Region and District
Table A-9:	Percent distribution of population aged 15 years and below by birth registration status, State/Region, urban and rural areas
Table A-9a:	Percent distribution of population aged 15 years and below by birth registration status, State/Region, and District

Table Number	Description
Table A-10:	Percent distribution of population aged 18 years and over by having a bank account, State/Region, urban and rural areas
Table A-10a:	Percent distribution of population aged 18 years and over by having a bank account, State/Region and District
Table A-11:	Proportion of population aged 18 years and over by the reason for not having a bank account, State/Region, urban and rural areas
Appendix B: Education	
Table B-1:	School attendance for population aged 3 years and over by sex and age group (Union)
Table B-2:	School attendance for population aged 3 years and over by State/Region, urban and rural area, sex
Table B-3:	Percentage of main reason for never attended school aged 3 years and over by urban and rural areas, State/Region, sex
Table B-4:	Percentage of population aged 5 years and over by highest level of education completed by urban and rural areas, State/Region, sex
Table B-5:	Percentage of main reason for stopped schooling by State/Region and sex
Table B-6:	Percentage of population aged 3 years and over by currently attending, level of education, State/Region, sex and District
Table B-7:	Percentage of literate and numerate population aged 15 years and over by State/Region, District and sex
Appendix C: Labour Force Participation	
Table C-1:	Population aged 5 years and over by labour force participation rate, unemployment rate and employment to population ratio by State/Region and sex
Table C-2:	Population aged 5 years and over by current activity status, State/Region and sex

Table Number	Description
Table C-3:	Main occupational category of employed persons aged 15 years and over by sex, urban and rural areas
Table C-4:	Main occupational category of employed persons aged 15 years and over by State/Region and sex
Table C-5:	Employed persons aged 15 years and over by major industrial category by sex
Table C-6:	Employed persons aged 15 years and over by major industrial category by State/Region and sex

Appendix D: Fertility

Table D-1:	Women in households aged 10 years and over and number of births by State/Region, urban and rural areas
Table D-2:	Ever married women aged 10-49 by age at first marriage and current age by State/Region, urban and rural areas, age group
Table D-3:	Ever married women aged 10-49 by age at first live birth and current age by State/Region, urban and rural areas

Appendix E: Migration

Table E-1:	Matrix of lifetime migration between State/Region by sex
Table E-2:	Population by place of previous residence, place of current residence and sex
Table E-3:	Internal migrant population by main reasons of movement from prior residence, State/Region and sex
Table E-4:	Main reasons for leaving country of international migrants by sex
Table E-5:	Type of channel for leaving the country of international migrants by country and sex

Table Number	Description
Table E-6:	Main channel used for sending money of international migrants by country and sex
Table E-7:	The amount of sending money of international migrants by country and sex
Table E-8:	Current activity status of international migrants by country and sex
Table E-9:	Highest grade completed of international migrants by country and sex
Table E-10:	Currently residing country by country, sex and age group

Appendix F: Disability

Table F-1:	Population aged 5 years and over by disability status, disability prevalence rate, type of disability, age group, and sex
Table F-2:	Population aged 5 years old and over by disability status, disability prevalence rate and type of disability, State/Region and District
Table F-3:	Proportion of population aged 5 years and over with disability who participated in any community/social/religious activity in the last 12 months by sex and type of activity, State/Region
Table F-4:	Proportion of population aged 5 years and over with disability who received support in the last 12 months by sex, type and source of support, State/Region

Appendix G: The Older Population

预览已结束，完整报告链接和二维码如下：

https://www.yunbaogao.cn/report/index/report?reportId=5_19763

