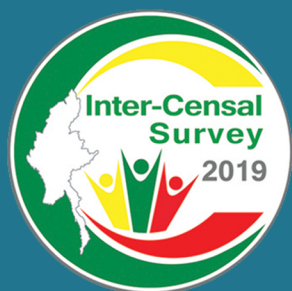
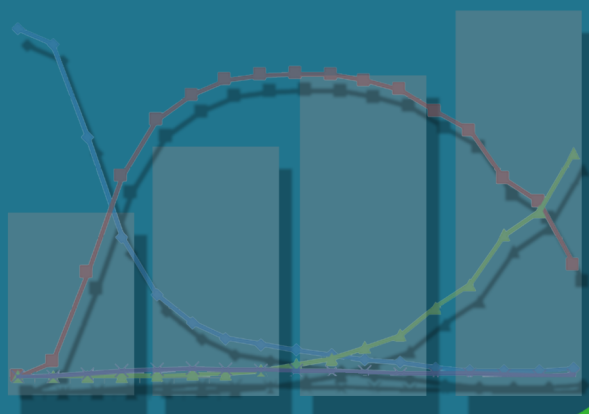




**THE REPUBLIC OF THE UNION OF MYANMAR**



# **The 2019 Inter-censal Survey The Union Report**



Department of Population  
Ministry of Labour, Immigration and Population



December 2020



# **The 2019 Inter-censal Survey**

## **The Union Report**

**For more information contact:**

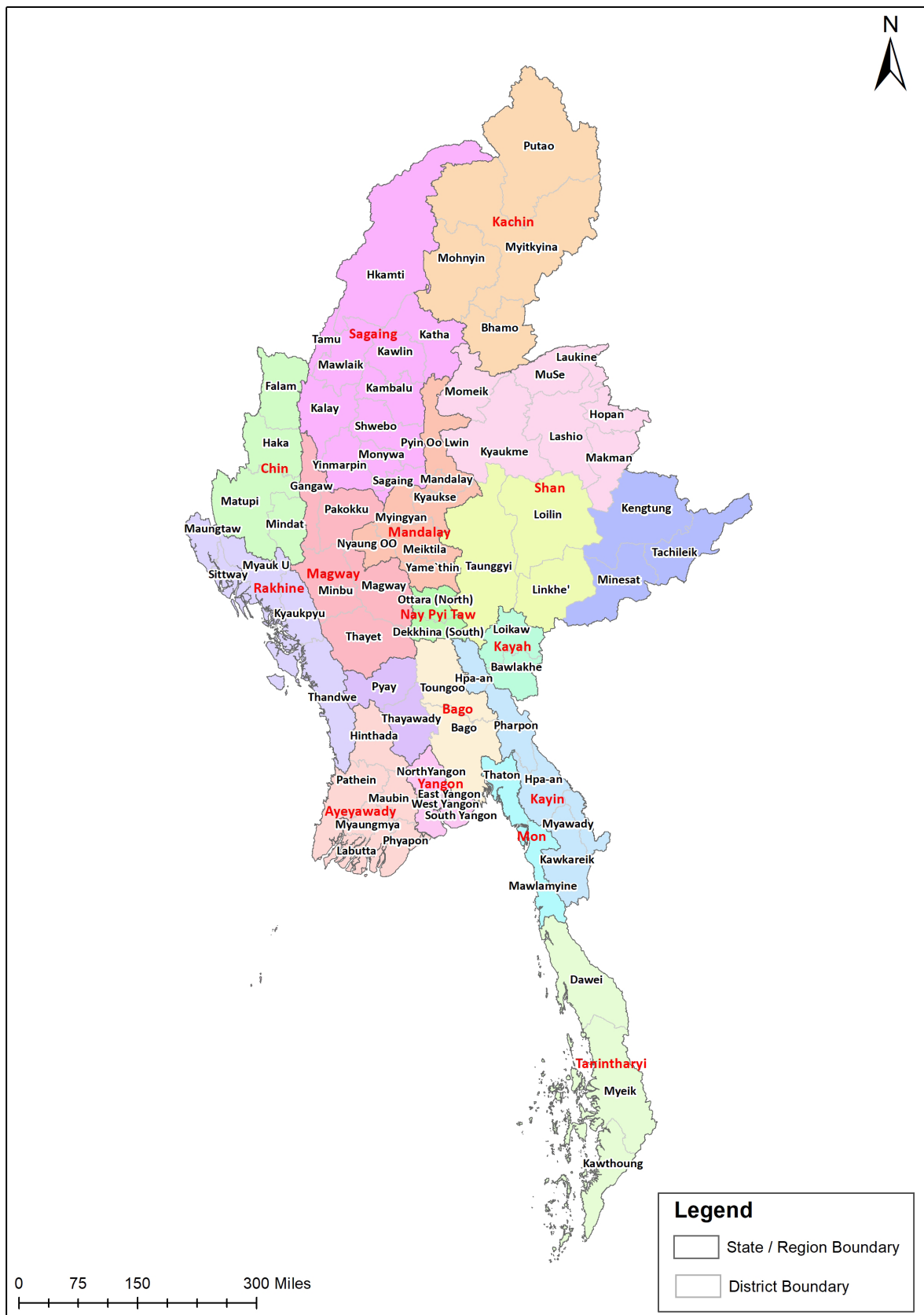
**Department of Population  
Ministry of Labour, Immigration and Population  
Office No. 48  
Nay Pyi Taw**

**Tel: +95 67 431 062  
[www.dop.gov.mm](http://www.dop.gov.mm)**

**December, 2020**



## Map of Myanmar by State/Region and District





## Foreword

The 2019 Inter-censal Survey (2019 ICS) was implemented by the Ministry of Labour, Immigration and Population, in collaboration with its line ministries and development partners, in four stages starting November 2019 until January 2020. It was the first in the country and was carried out to update the information collected during the 2014 Population and Housing Census. Moreover, it was aimed to provide baseline data for the National Indicator Framework (NIF) of the Myanmar Sustainable Development Plan (MSDP), assess the country's progress on the targets set for the Sustainable Development Goals (SDGs), and serve as a preparation for the 2024 Population and Housing Census.

The 2019 ICS was under the guidance of the Central Inter-censal Survey Committee which was responsible for providing policy guidelines for the planning and implementation of the project. Under the Central Committee, State/ Region/ Nay Pyi Taw, District and Township Level Committees were formed to supervise the implementation of the project at the different levels.

The data enumeration was carried out using the Computer-Assisted Personal Interviewing (CAPI). Young volunteers from respective townships were recruited as enumerators and supervisors.

This report provides up-to-date information on demographic and socio-economic characteristics of the population and households of Myanmar. It presents reliable estimates of key indicators at national, state/region and district levels by urban and rural areas. This report is the second in a series of publication of the 2019 ICS after the Provisional results was released earlier this year. More publications on thematic areas will follow.

I sincerely hope that the information in this report will form a critical base for planning, policy development and decision-making in various sectors including its effective use for the implementation of sectoral development plans of the Government and socio-economic reform processes. I also believe that the information can also be used for responding to, mitigating, and addressing the COVID-19 pandemic.

The contribution from several organizations and professionals made possible the successful implementation of 2019 ICS. My first gratitude goes to the Government of Myanmar for the approval and allocation of the budget for the project and to Nay Pyi Taw Council, State/Region government for their support. Furthermore, I wish to express my sincere thanks to the members of the Central Inter-censal Survey Committee and of the committee

at every administrative level who actively coordinated and cooperated in this endeavor. Likewise, to the Ward/VT administrators for their support during the field activities.

My deepest appreciation for the much needed assistance in the form of funding, technical and material support provided to the Ministry by the Development Partners, namely, the United Nations Population Fund (UNFPA), United Nations Children's Fund (UNICEF), World Bank, Asian Development Bank (ADB), One Map Myanmar and, VSO Myanmar.

I would also like to thank the State/Region/District/Township Immigration and Population officials who actively participated in the implementation of 2019 ICS and to the crucial role played by the technical team of the Department of Population in all the phases of the survey. My heartfelt gratitude goes to the youth volunteers who worked tirelessly as supervisors and enumerators.

My warmest gratitude is also extended to the people of Myanmar for their support and cooperation during the enumeration, without them, the project will not succeed.



H.E U Thein Swe

Union Minister

Ministry of Labour, Immigration and Population

The Republic of the Union of Myanmar

预览已结束，完整报告链接和二维码如下：

[https://www.yunbaogao.cn/report/index/report?reportId=5\\_19762](https://www.yunbaogao.cn/report/index/report?reportId=5_19762)

