

tepav

Economic Policy Research Foundation of Turkey

Industry is for inclusive growth:
Connectivity makes Regional Integration Easy

Güven Sak

New Delhi, 18 October 2012

Outline

- Industry is better for inclusive growth
 - Better than mining definitely
 - Industry requires collaboration: Look for value chains
 - Connectivity for industrial development
- Increasing connectivity fosters integration
 - BALO: Connecting Turkey to Europe
 - Istanbul– Islamabad Railway: long-time forgotten links
 - Big picture: Modern Silk Road
 - Missing links in Trans-Asian Connectivity
- Conclusion

How would you send your cargo from Istanbul to Karachi or Mumbai? Maritime?

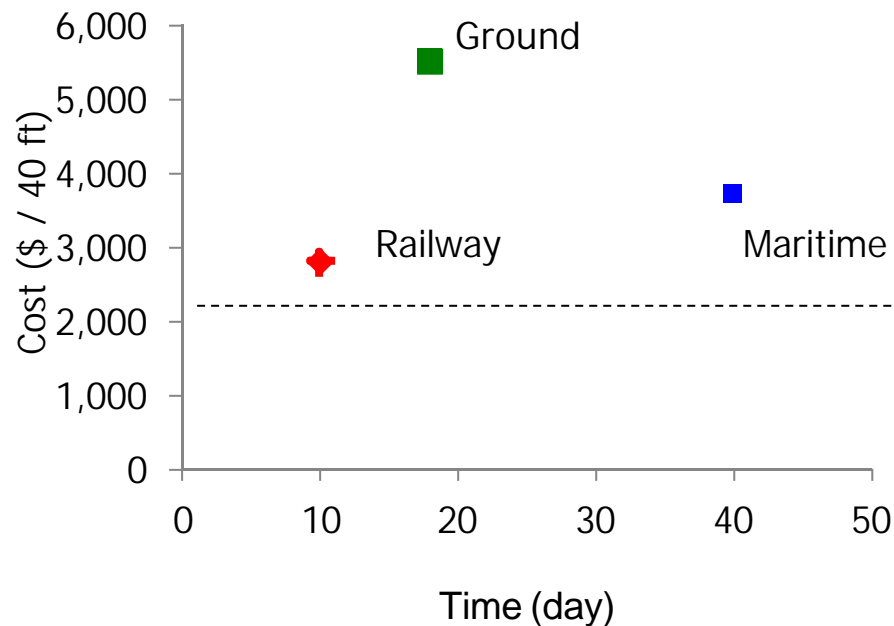


How would you ship your cargo from Istanbul to Karachi or Mumbai? Railway?

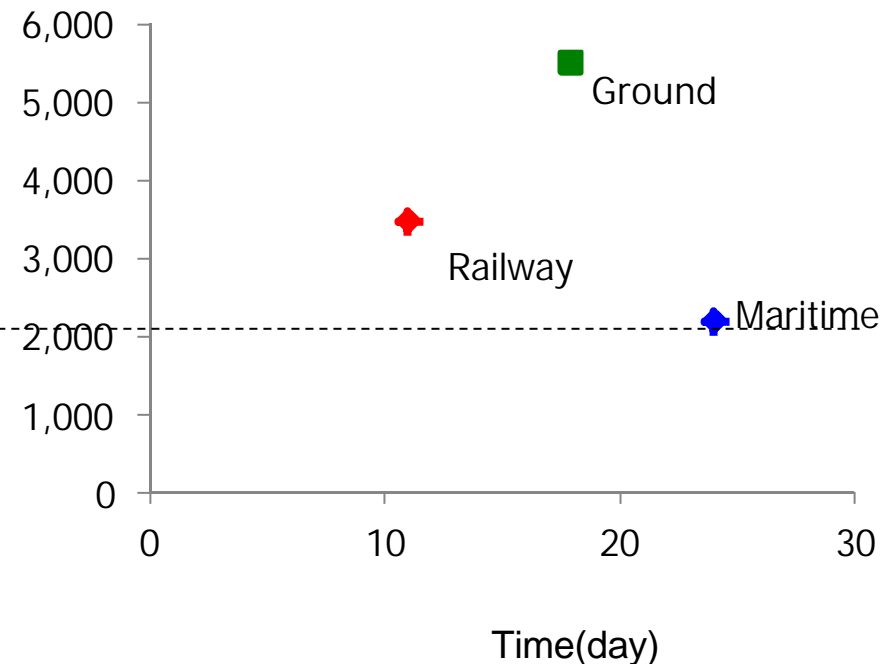


Railway is
fast between coastal areas,
fast & cheap between inland areas

Ankara - Lahore



Istanbul - Karachi

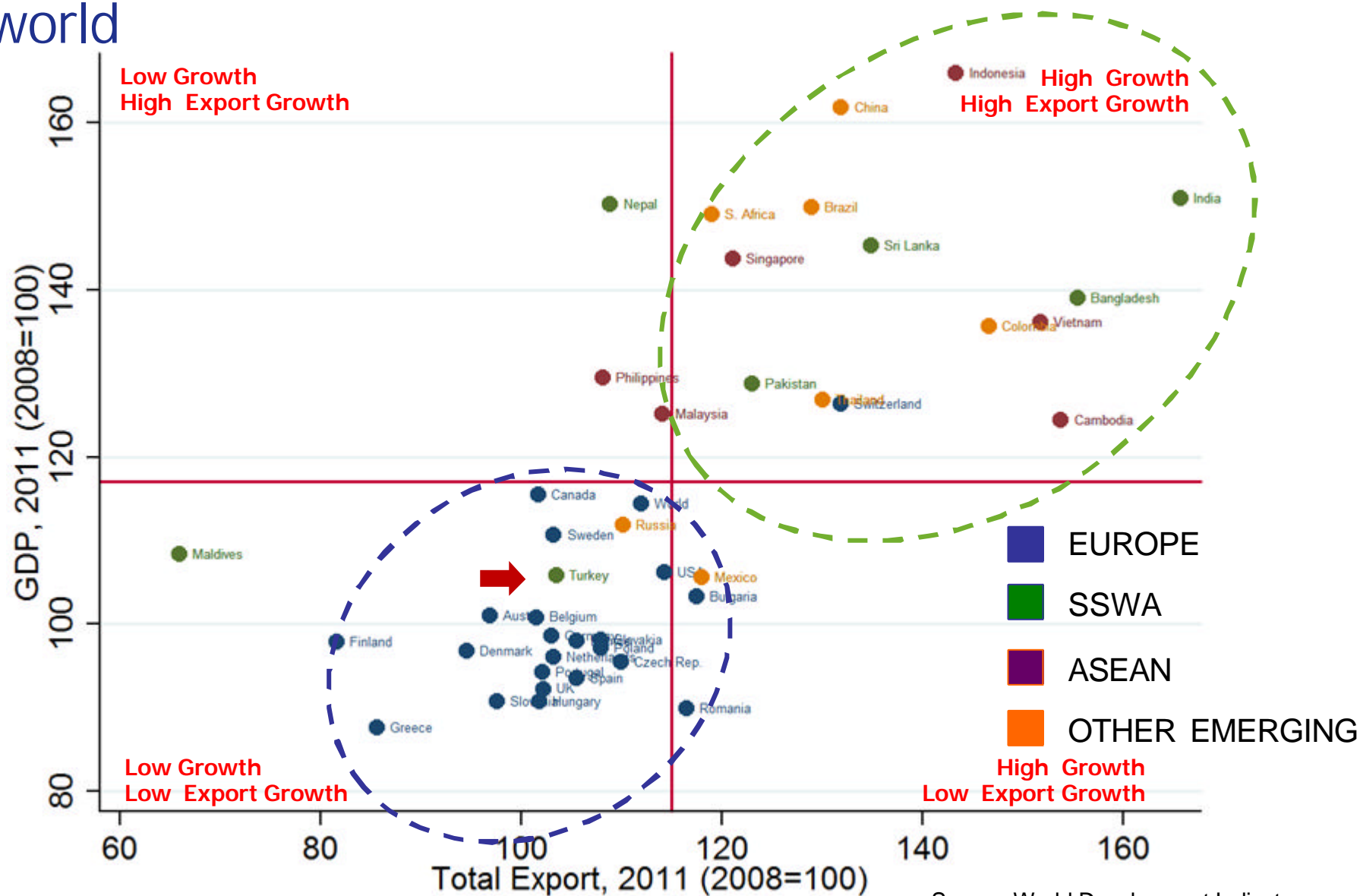


Source: Astra Logistics, TCDD, TEPAV Data

At TEPAV, we care about regional integration & connectivity

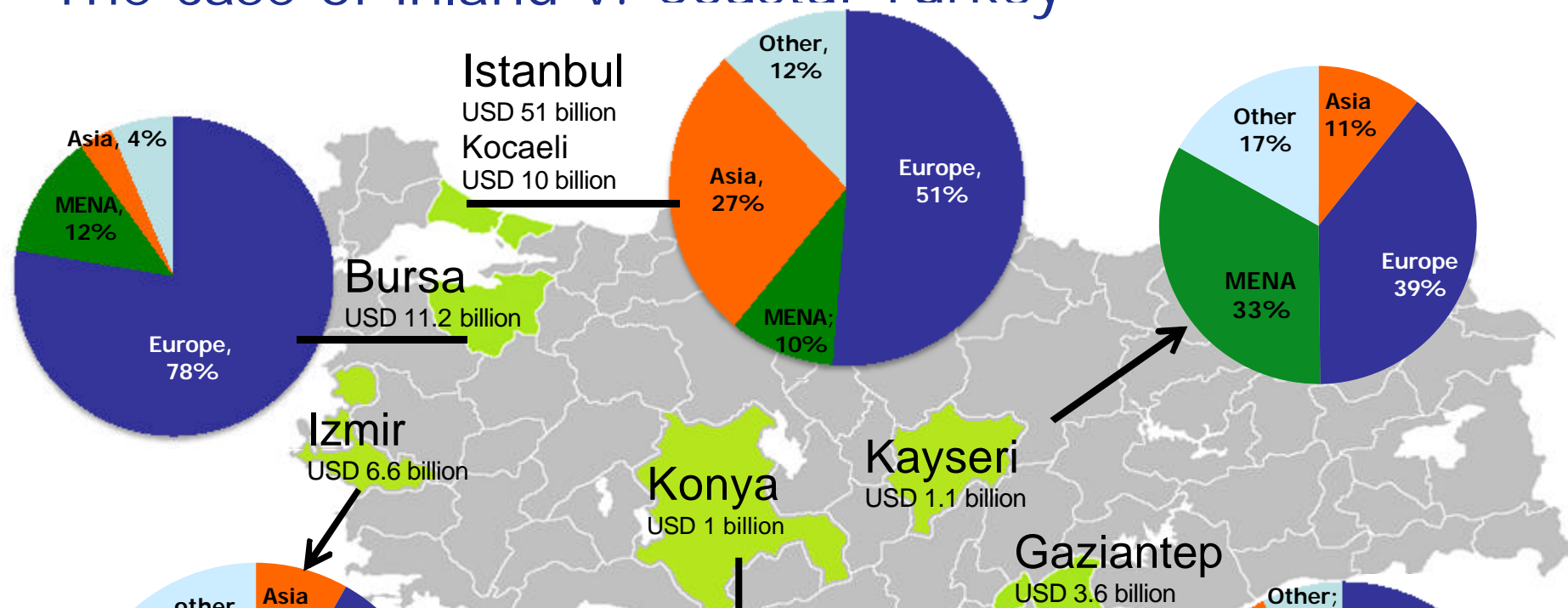
- The Economic Policy Research Foundation of Turkey
 - ➔ A private, nonpartisan, nonprofit “think- and do-tank” devoted to independent research and project implementation
- Established in 2004, with the support of the Union of Chambers and Commodity Exchanges of Turkey
 - ➔ now only 40% of the budget is through TOBB
- Three major disciplines
 - ➔ Economic policy, foreign policy and governance
- Regional Integration projects
 - ➔ Integration by providing good investment climate
 - Special Economic Zones in the West Bank, Yemen and Mauritania
 - ➔ Transport corridor projects
 - BALO: Connecting Turkey to Europe
 - Istanbul– Islamabad Railway: long-time forgotten links
 - Modern Silk Road

New markets gain importance in the post-crisis world



Source: World Development Indicators

The connectivity matters for the market orientation: The case of inland v. Coastal Turkey



预览已结束，完整报告链接和二维码如下：

https://www.yunbaogao.cn/report/index/report?reportId=5_7779

