



Lao, People's Democratic Republic of

ISCC Ranking: 114

Reducing the cost of international trade transactions has become a priority for Governments intent on facilitating the effective integration of firms in regional and global production networks. Along with improving availability and access to trade related infrastructure, cutting red tape and enhancing trade processes have become essential both to maintain competitiveness and enable smaller players to also benefit.

The latest data on international trade costs from the ESCAP-World Bank database suggest that Lao PDR has made some limited progress on reducing trade costs with its South-East Asian neighbors, with relatively more progress made instead on reducing trade costs with East and North-East Asian partners. When tariff costs are excluded, trade costs between Lao PDR and the United States are only slightly higher than those between Lao PDR and some of the other South-East Asian countries, suggesting further room for intra-regional trade facilitation. Trade costs in the agricultural sector remain prohibitively high in most cases.

Lao PDR ranks 114th of 179 countries according to the ESCAP International Supply Chain Connectivity (ISCC) Index, a new index released on the occasion of the Asia-Pacific Trade & Investment Week (November 2013) which captures the extent of a country's facilitation of import and export processes as well as its access to efficient maritime services. Lao PDR's progress in enhancing supply chain connectivity since 2006 has been significant but its performance remains well below the South-East Asian average, in part due to its landlockedness.

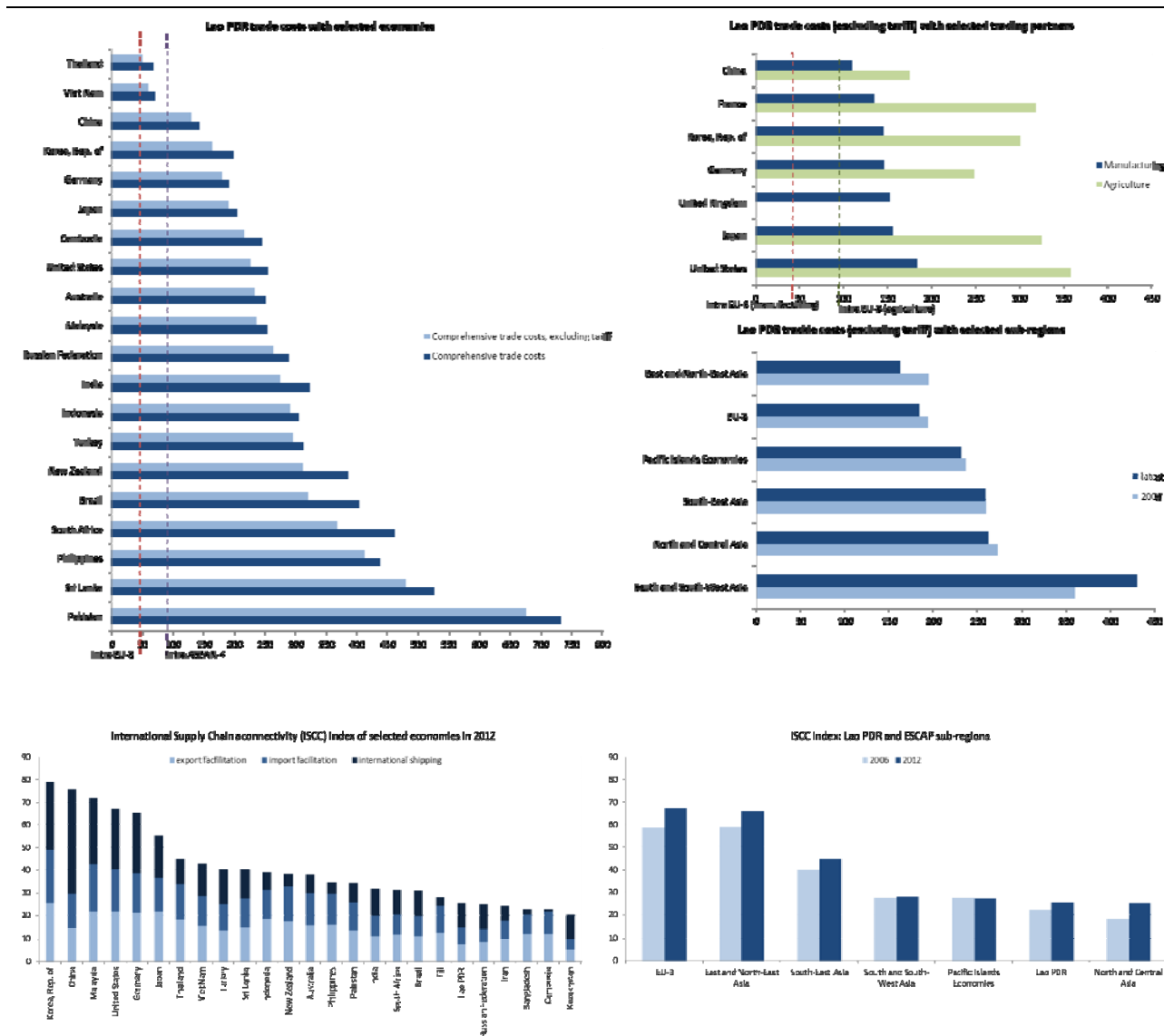


Table 1: Bilateral trade costs (excluding tariff): selected top traders with Lao PDR in goods sector

Trade costs: overall	Value: tariff-equivalent			Percentage change
	2006	latest	Average 2006-latest	2006-latest
Partner country				
China	143.47	129.28	139.92	-9.89
France	179.46	164.02	179.48	-8.61
Germany	187.96	178.62	182.74	-4.97
Japan	221.48	189.62	203.06	-14.38
Korea, Rep. of	170.96	162.96	166.19	-4.68
United Kingdom	214.51	190.08	209.62	-11.39
United States	259.47	225.39	227.10	-13.14
Trade costs	Value: tariff-equivalent			Percentage change
	2006	latest	Average 2006-latest	2006-latest
ESCAP sub-region				
East and North-East Asia	194.58	162.96	180.97	-16.25
North and Central Asia	272.87	262.69	288.97	-3.73
Pacific Islands Economies	236.93	231.19	237.21	-2.42
South and South-West Asia	360.18	430.18	447.83	19.43
South-East Asia	259.74	258.92	250.43	-0.32
EU-3	193.98	184.35	190.94	-4.96

**Table 2: Bilateral trade costs (excluding tariff):
selected economies/sub-regions with Lao PDR in agriculture and manufacturing sector**

Trade costs: agriculture	Value: tariff-equivalent			Percentage change
	2006	latest	Average 2006-latest	2006-latest
Partner country				
China	214.22	174.41	197.65	-18.58
France	286.68	317.82	303.39	10.86
Germany	272.90	247.43	251.89	-9.33
Japan	481.39	323.74	442.44	-32.75
Korea, Rep. of	N/A	299.60	374.27	N/A
United Kingdom	N/A	N/A	N/A	N/A
United States	483.78	357.38	360.18	-26.13
Trade costs: agriculture	Value: tariff-equivalent			Percentage change
	2006	latest	Average 2006-latest	2006-latest
ESCAP sub-region				
East and North-East Asia	347.81	237.01	324.86	-31.86
North and Central Asia	N/A	N/A	N/A	N/A
Pacific Islands Economies	485.98	464.81	479.92	-4.35
South and South-West Asia	490.15	492.99	550.22	0.58
South-East Asia	410.48	370.87	384.03	-9.65
EU-3	279.79	247.43	272.04	-11.57

Trade costs: manufacturing	Value: tariff-equivalent			Percentage change
	2006	latest	Average 2006-latest	2006-latest
Partner country				
China	119.50	109.13	118.49	-8.68
France	133.84	134.43	141.77	0.44
Germany	141.48	145.23	147.08	2.65
Japan	168.83	155.00	164.08	-8.19
Korea, Rep. of	120.47	144.80	137.47	20.20
United Kingdom	162.49	151.89	168.03	-6.52
United States	199.62	182.69	185.38	-8.48
Trade costs: manufacturing	Value: tariff-equivalent			Percentage change
	2006	latest	Average 2006-latest	2006-latest
ESCAP sub-region				
East and North-East Asia	151.32	144.80	150.16	-4.31
North and Central Asia	207.64	221.51	234.50	6.68
Pacific Islands Economies	176.71	187.81	190.63	6.28
South and South-West Asia	301.12	329.68	380.87	9.48
South-East Asia	196.62	201.54	200.24	2.50
EU-3	145.94	148.56	152.75	1.80

Table 3: International supply chain connectivity (ISCC) index and sub-indicators: top traders

Country	2006				2012				ISCC (average 2006-2012)	ISCC (percentage change 2006-2012)
	Export facilitation	Import facilitation	International shipping	ISCC	Export facilitation	Import facilitation	International shipping	ISCC		
Lao PDR	6.84	5.32	9.99	22.15	7.50	6.96	11.10	25.56	24.61	15.41
Japan	21.71	14.97	19.02	55.70	21.59	14.91	18.59	55.10	55.91	-1.09
United Kingdom	19.12	17.11	24.03	60.25	20.83	19.64	24.76	65.23	62.37	8.26
Germany	22.13	18.35	23.77	64.25	21.24	17.37	26.71	65.32	65.24	1.67
United States of America	22.11	19.07	25.29	66.46	21.57	18.66	27.03	67.25	65.55	1.18
France	17.60	13.92	19.98	51.50	26.86	23.97	20.66	71.49	65.64	38.83
China	17.92	16.89	33.33	68.15	14.28	15.15	46.03	75.46	72.62	10.73
Korea, Rep. of	16.85	11.79	21.20	49.84	25.56	23.33	29.98	78.87	66.30	58.25

Table 4: International supply chain connectivity (ISCC): sub-regional average

Sub-region	2006	2012	Average 2006-2012	Percentage change 2006-2012
East and North-East Asia	58.91	66.03	62.93	12.09
North and Central Asia	18.13	25.37	20.95	39.94
Pacific Islands Economies	27.36	27.20	27.28	-0.61
South and South-West Asia	27.38	28.03	28.16	2.37
South-East Asia	39.65	44.66	42.24	12.64
EU-3	58.67	67.35	64.41	14.80

This note is based on ESCAP's trade costs and International Supply Chain Connectivity Databases. For full database access, please visit <http://www.unescap.org/tid/artnet/database.asp>

Definitions:

Comprehensive trade costs: all costs involved in trading goods internationally with another partner relative to those involved in trading goods domestically;
Comprehensive trade costs (excluding tariff): all additional costs other than tariff costs involved in trading goods bilaterally rather than domestically;
International Supply Chain Connectivity (ISCC): an index that measures overall trade facilitation performance of a country along the international supply chain, which is based on the trading across border (TAB) indicators from the World Bank Doing Business Report and the Liner Shipping Connectivity Index (LSCI) of UNCTAD. ISCC Ranks from 1 to 179. **Intra EU-3:** average trade costs among 3 largest EU economies, namely, France, Germany and United Kingdom.
Intra ASEAN-4: average trade costs among Indonesia, Malaysia, Philippines and Thailand.

我们的产品



大数据平台

国内宏观经济数据库

国际经济合作数据库

行业分析数据库

条约法规平台

国际条约数据库

国外法规数据库

即时信息平台

新闻媒体即时分析

社交媒体即时分析

云报告平台

国内研究报告

国际研究报告

预览已结束，完整报告链接和二维码如下：

https://www.yunbaogao.cn/report/index/report?reportId=5_6361

