



Welcome to Presentation on
EFFECTIVE STRATEGIES FOR MAINSTREAMING DRR & CCA
INTO SECTORAL DEPARTMENTS/MINISTRIES
IN BANGLADESH



Md. Munir Chowdhury
Joint Secretary
Ministry of Disaster Management & Relief

COMMUNITY BASED RESILIENCE:

MAINSTREAMING DISASTER RISK REDUCTION AND CLIMATE CHANGE INTO DEVELOPMENT PLANNING



CRA



SAFE WATER SUPPLY



RAISING PLINTHS



PREPAREDNESS



CAPACITY BUILDING



AWARENESS RAISING



AGRICULTURAL ADAPTATION



ASSESSMENT

Bangladesh: Country context and vulnerability

Recognized globally as one of the most vulnerable countries to Climate Change

- ❑ Geographical location & land characteristics,
 - Deltaic landscape, 80% floodplain
- ❑ Multiplicity of rivers and the monsoon climate
 - Over 300 rivers, 57 trans boundary rivers
 - Drains entire western Himalayan runoff to the Bay
- ❑ Population density very high (1045/sq.km)
- ❑ High level of poverty
- ❑ Natural resources based (predominantly agrarian) economy

RISK PROFILE

- **First rank** climate change **vulnerable nations.**
- **Fifth rank** in the **world risk index 2012**

Number
of people
exposed
yearly

46 Million

24 Million

71 Million

20 Million

7 Million

DROUGHT - Affecting 8.3 million Ha of land.

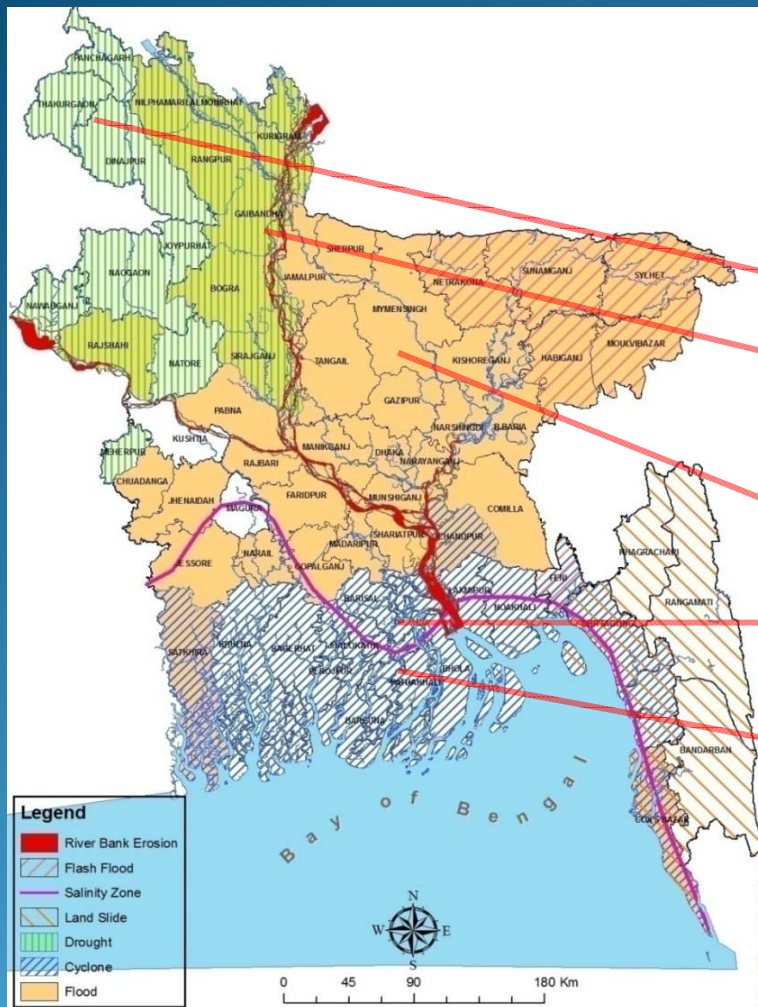
FLASH FLOOD –Unpredictable, recurring, uncertain.

FLOOD - Inundates more areas, increases river erosion, breaches embankments, damages infrastructures.

SALINITY INTRUSION - Spreading from 1.5 to 2.5 Mha (2007).

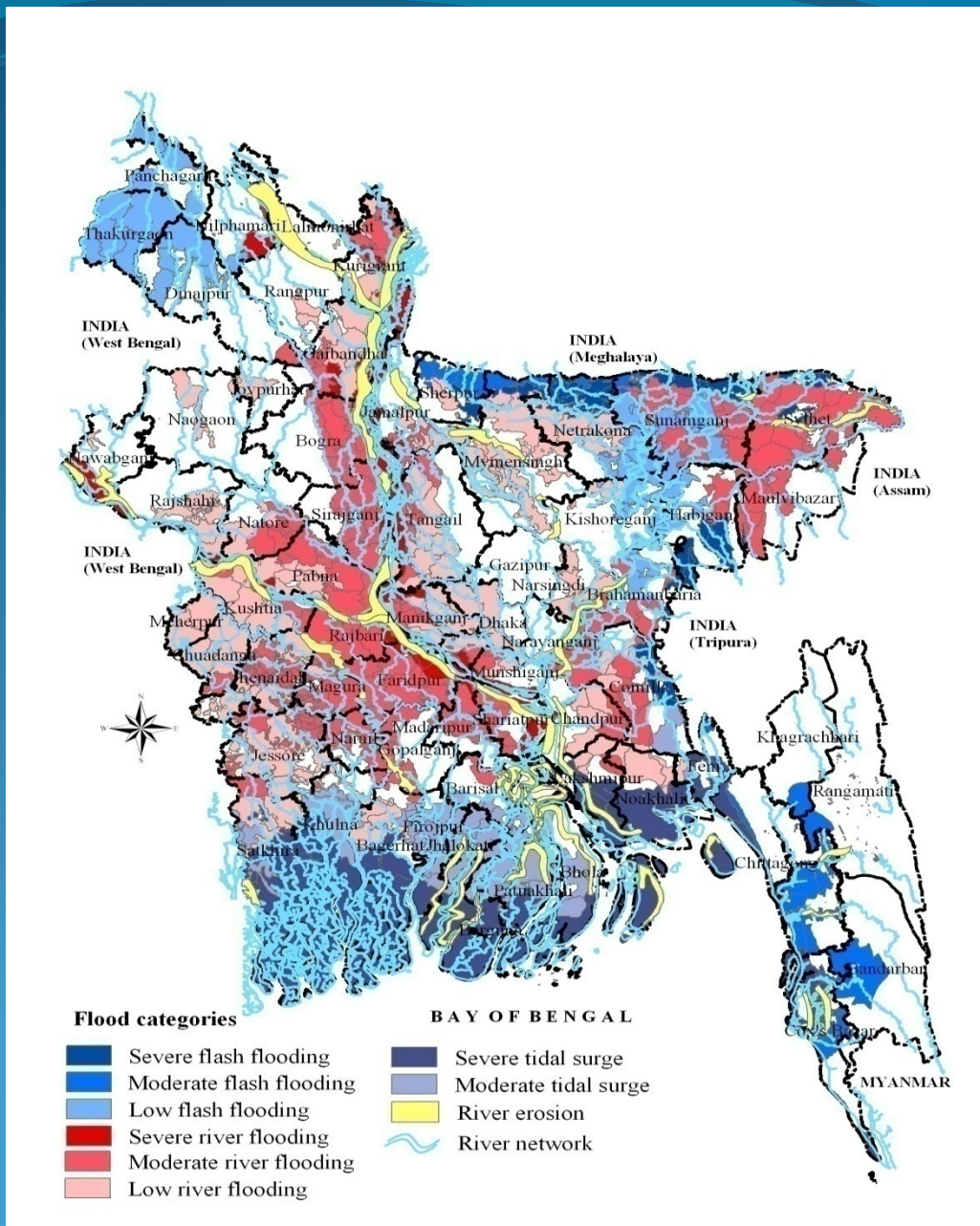
CYCLONE - The deadliest and most destructive hazard. It is recurring, with lingering aftermath, complex recovery.

CLIMATE CHANGE HAZARDS, EARTHQUAKES, FIRE BREAKOUT, INFRASTRUCTURE COLLAPSE ETC



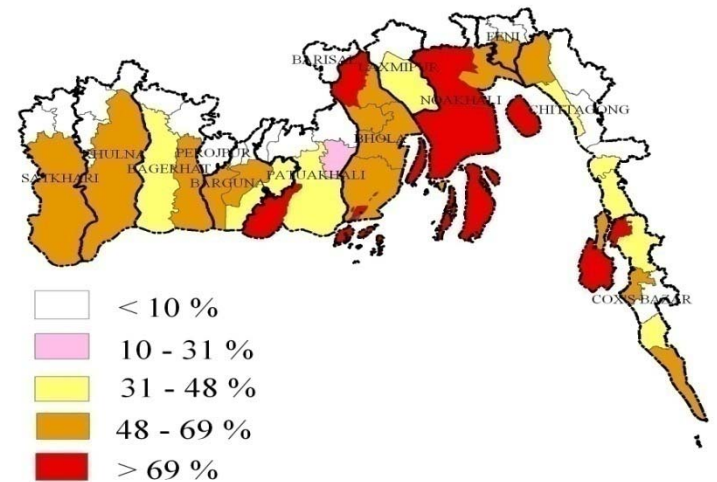
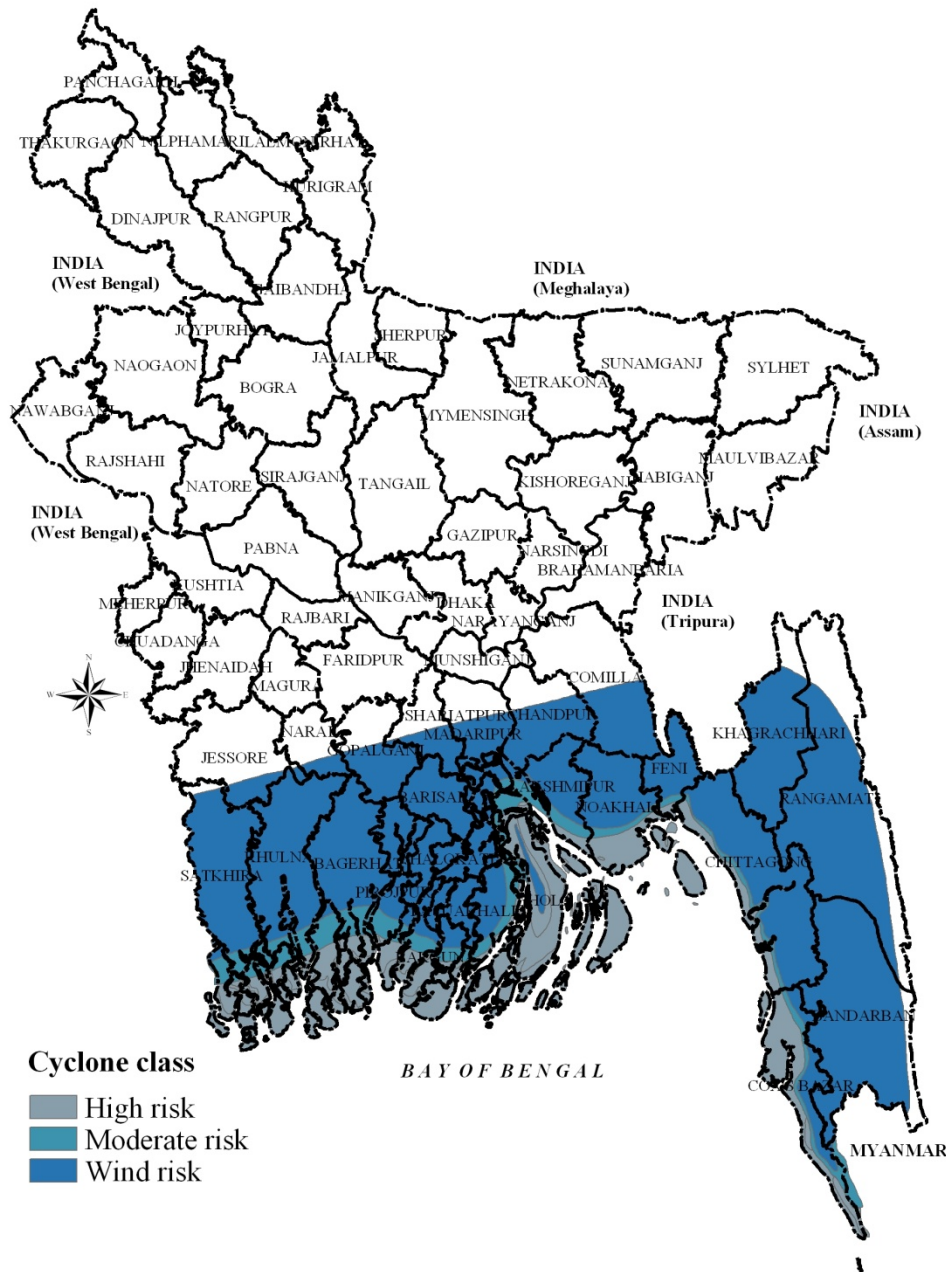
Translated into annually 14% GNP exposure to disasters, the highest in the world...

Flood

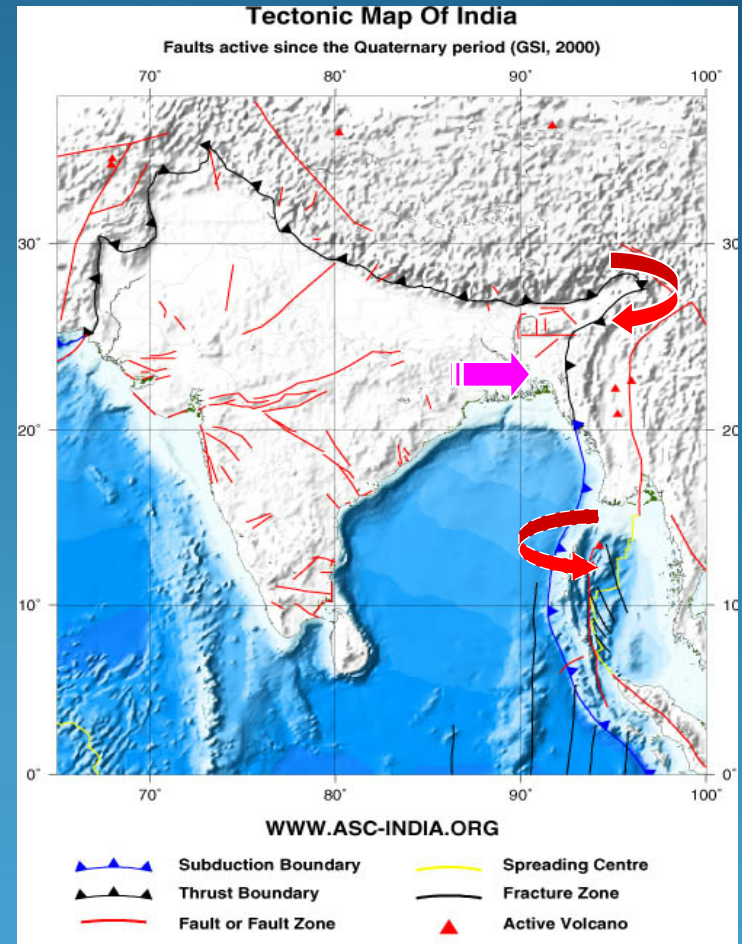
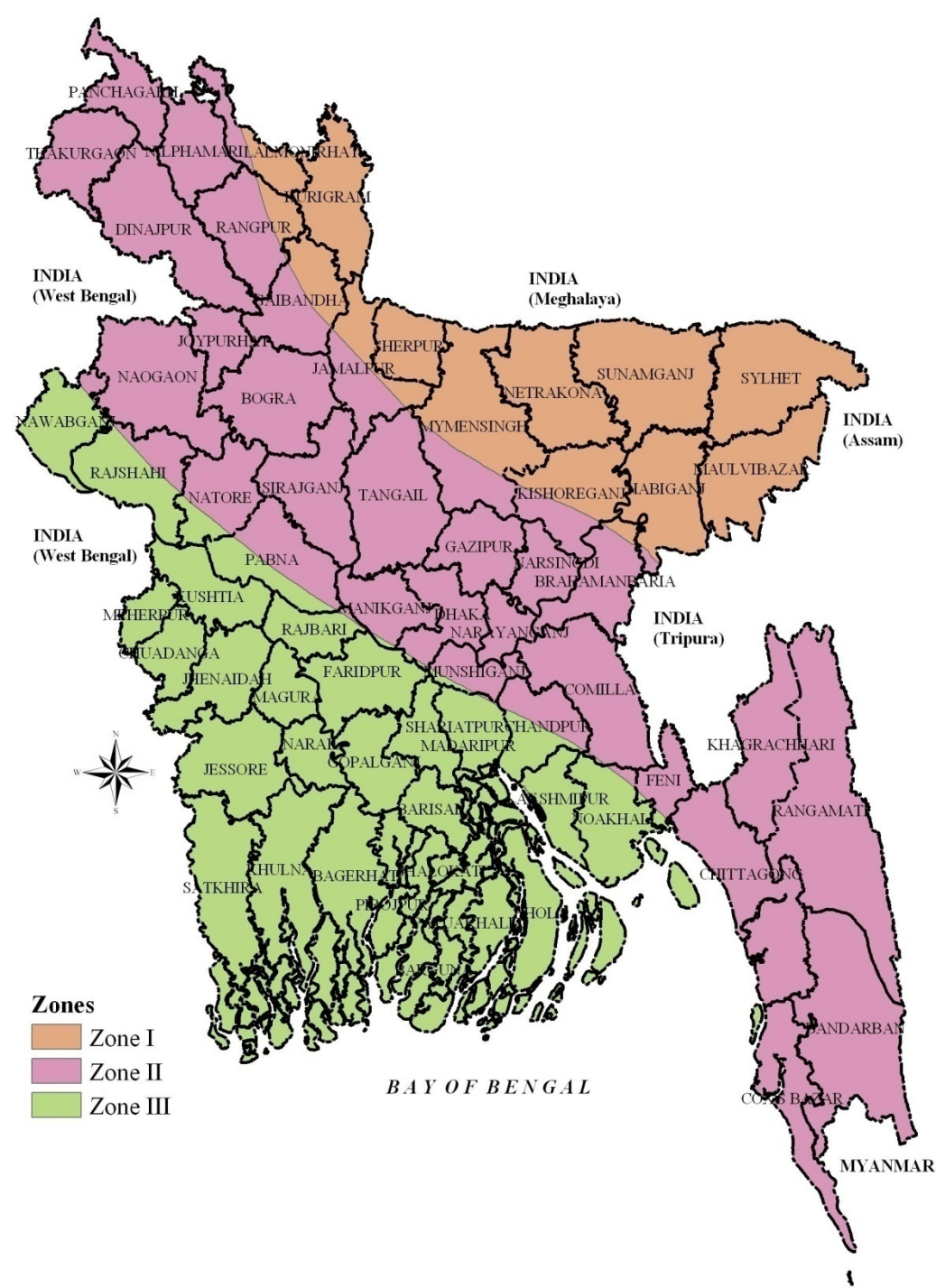


Cyclone

Coastal upazilas affected by severe cyclones



Earthquake Risk Zone



EROSION



预览已结束，完整报告链接和二维码如下：

https://www.yunbaogao.cn/report/index/report?reportId=5_5834

