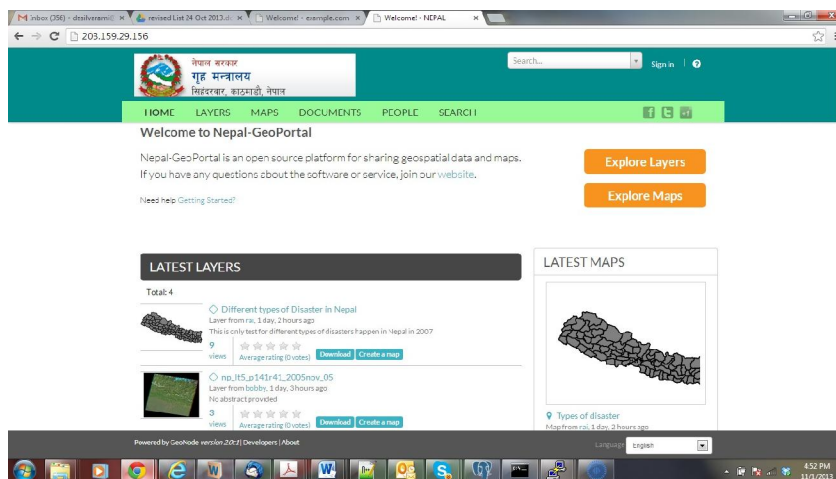


Technical Assistance on Implementation of Geo-referenced Information Systems for Disaster Risk Management (Geo-DRM)



Goal

- Working Geo-Portal



What it offers

GeoNode is a geospatial content management system, a platform for the management and publication of geospatial data

- **Geospatial data storage**

- Vector Data (as Shapefiles)
- Raster Data (as GeoTIFFs)

- **Data mixing, maps creation**

- Once the data has been uploaded, GeoNode lets the user search for it geographically or via keywords and create maps.
- possible to use different popular base layers, like Open Street Map, Google Satellite or Bing layers
- Once maps are saved, it is possible to embed them in any webpage or get a PDF version for printing.

Built on



Build upon GIS open source projects:

- GeoServer (Map Engine)
- PostgreSQL/PostGIS (Spatial Database)
- GeoNetwork (Meta Data)
- OpenLayers (Visualization)
- GeoExt (Tools)
- GeoWebCache (Caching)
- Mapfish Module (Printing)

Components

EXPLORE LAYERS

Most Recent | Less Recent | A-Z | Z-A | Most Popular | Relevance

Total: 15

Myanmar - Water Bodies
Layer from gic, 2 days, 18 hours ago
Water bodies of Myanmar
3 views | Average rating (0 votes)

Myanmar - Roads
Layer from gic, 3 days, 18 hours ago
The road network in Myanmar
5 views | Average rating (0 votes)

Internet Users (Per 100 Po)
Layer from gic, 1 week, 4 days ago
The internet users in SAARC countries
13 views | Average rating (0 votes)

RGB Image-After Cyclone
Layer from gic, 2 weeks, 2 days ago
RGB composite image derived from
red color depicts the inundated area
5 views | Average rating (0 votes)

Data Layers

EXPLORE MAPS

Most Recent | Less Recent | A-Z | Z-A | Most Popular | Relevance

Total: 2

Flood Map - After Cyclone Na
Map from gic, 3 days, 18 hours ago
This image was taken after Cyclone Na
5 views | Average rating (0 votes)

Transportation-SAARC Region
Map from gic, 4 weeks ago
Road Network and Railway Network of
15 views | Average rating (0 votes)

Maps



Documents

Security Features

Chosen user permissions

layers	attribute	Can delete attribute
layers	layer	Can add layer
layers	layer	Can change layer
layers	layer	Can change permissions
layers	layer	Can delete layer
layers	layer	Can view
layers	style	Can add style
layers	style	Can change style
layers	style	Can delete style
maps	map	Can add map
maps	map	Can change map
maps	map	Can change permissions
maps	map	Can delete map
maps	map	Can view
maps	map layer	Can add map layer
maps	map layer	Can change map layer
maps	map layer	Can delete map layer

User Permissions

PERMISSIONS

Who can view and download this data?

- ☐ Anyone ☒ Any registered user
☐ Only users who can edit

Who can edit this data?

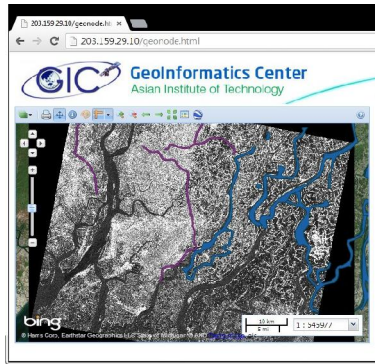
- ☐ Any registered user
☒ Only the following users or groups:

gic

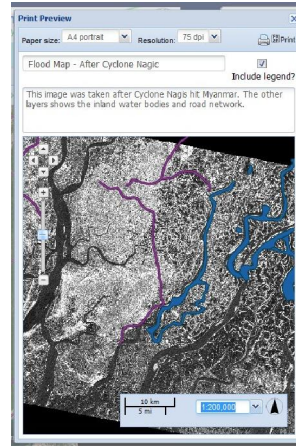
Data Permissions

- Layer
- Map
- Document

Dealing with maps



Map Publishing



Map Printing

预览已结束，完整报告链接和二维码如下：

https://www.yunbaogao.cn/report/index/reportId=5_5637

