

STATUS AND CHALLENGERS FOR GIS APPLICATION SPACE TECHNOLOGY IN FIJI

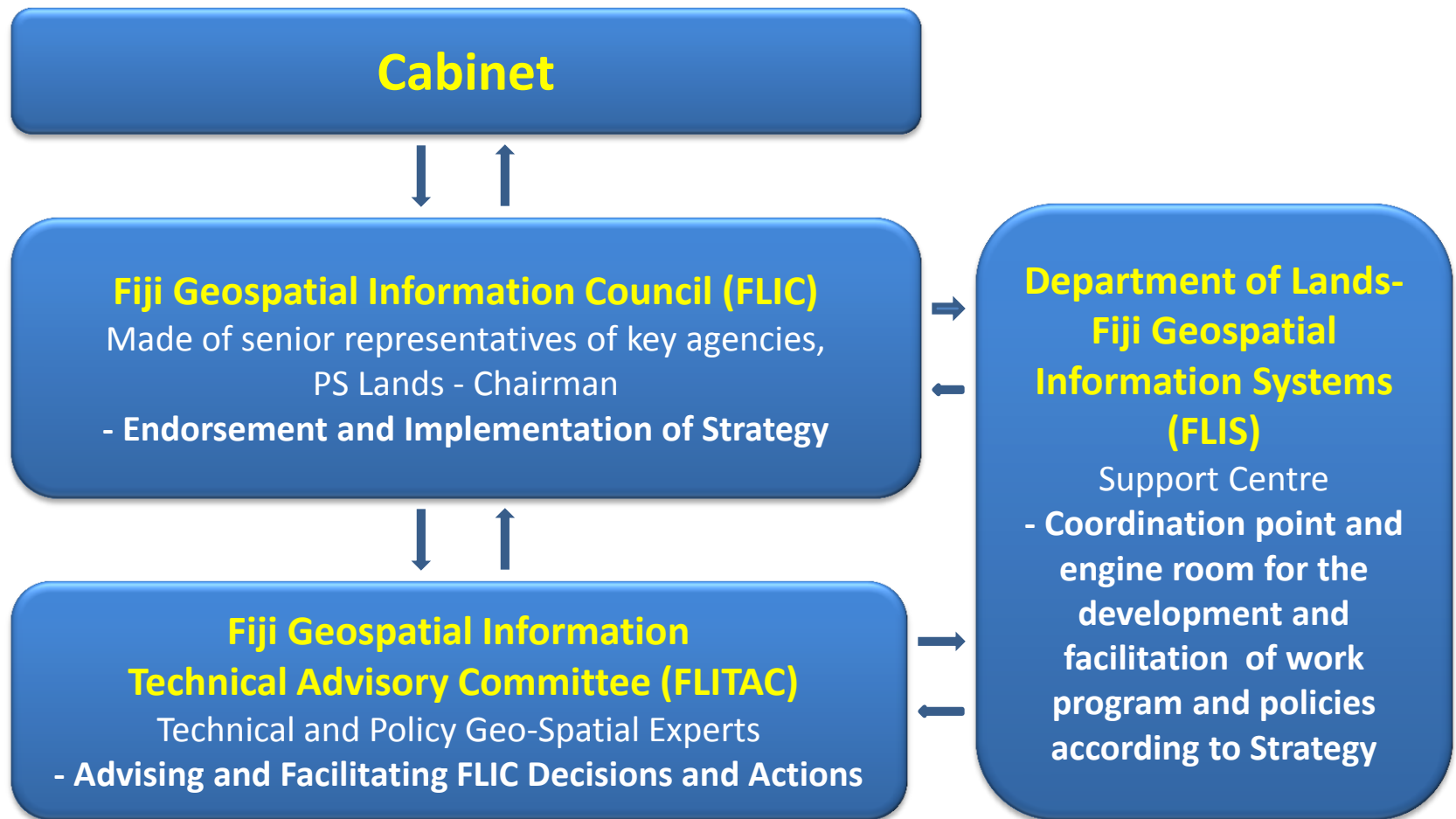
GENERAL GEOSPATIAL BRIEF - FIJI

- May 1989 – LMR submitted a paper to Government for a need of a GIS – Request favourably considered.
- NZAID – funded two highly qualified personnel from LINZ
- Study team identified 9 key objectives and 21 key issues
- 5th February 1991- Cabinet agreed to adopt the LIS blue print

Cabinet Decision 33 of 1995

- Fiji Government to adopt the National Geospatial Information Strategy
- Minister for Lands and Mineral Resources (Hon. Prime Minister) appointed responsible for the programme;
- That FGIC be formed under the Chairmanship of PSLMR
- Members to include PS for Housing, Finance, Fijian Affairs, GM iTLTB, PSC, SG & other Geospatial related agencies.

Proposed Governance Structure



FUNCTIONS OF FGIC

- ☐ Development and coordination of all GIS Projects
- ☐ Sought Funding
- ☐ Formulation of policies on data management
- ☐ Training and education
- ☐ Liaison with private sectors and user communities, inter-depth coordination's
- ☐ Management of GIS Support Centre
- ☐ Publication of information

ACHIEVEMENTS

- ❑ Development of various databases –survey plan journal, Valuation records, lease admin, Road index, RT System, Geodetic Systems (WGS72), NG & CG register, **State Land Register, National Land Use Master Plan.**
- ❑ Development of Spatial/Mapping Applications –CCMS, Fiji Topographical Database, Digitization of NLC maps , Vanua View etc
- ❑ Development of Policies and Standards –standards & integration, rights of data creators,
- ❑ Training and capacity Building -GIS Training at USP, GIS/RS User Forum & Conferences, Overseas Trainings

Challenges and Setbacks

- ❑ From 2000 not much external support but under operating budget of Govt and NZ Govt.
- ❑ 2006 FGIC membership dropped and FGIS operated under Ministry of Lands budget.
- ❑ Some applications not sustained by respective agencies/custodians.

预览已结束，完整报告链接和二维码如下：

https://www.yunbaogao.cn/report/index/report?reportId=5_5614

