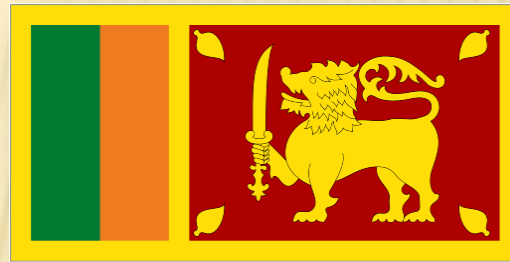




# Regional Policy Dialogue on Transport Connectivity in Southern Asia 19-20 November 2014



## COUNTRY REPORT PRESENTATION SRI LANKA RAILWAYS - SRI LANKA

WIJAYA SAMARASINGHE  
DIRECTOR PLANNING  
SRI LANKA RAILWAYS

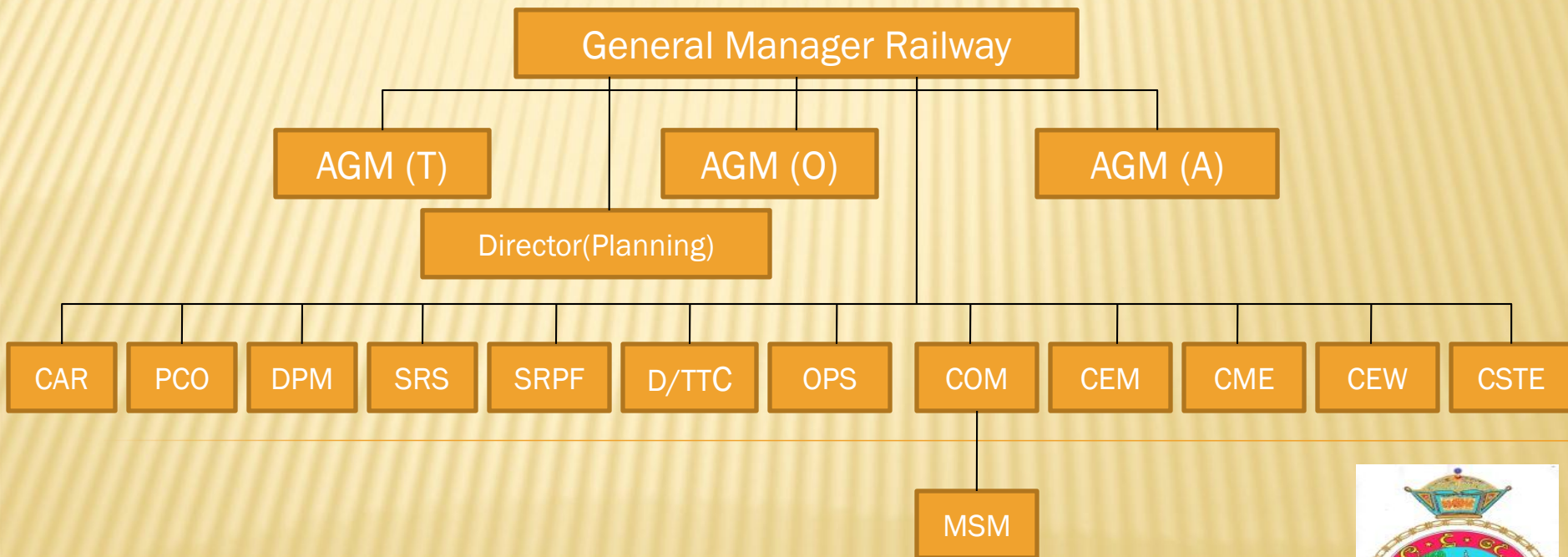
# A. Company Profile

## ORGANIZATION - DEPARTMENT OF SRI LANKA RAILWAY

P.O. Box,355,Olcott Mawatha ,Colombo 10.

Tel. +94 11-2421281 Fax: +94 11-2446490

Web. [www.railway.gov.lk](http://www.railway.gov.lk)





## 02. COMPANY STATUS

- ✖ Operated as Government Department as per the provision of the Railway Ordinance



Service began in 1864, with the construction of the Main Line from Colombo to Ambepussa, 54 kilometers to the east. The first train ran on 27 December 1864 and the line was officially opened for traffic on 02 October 1865.



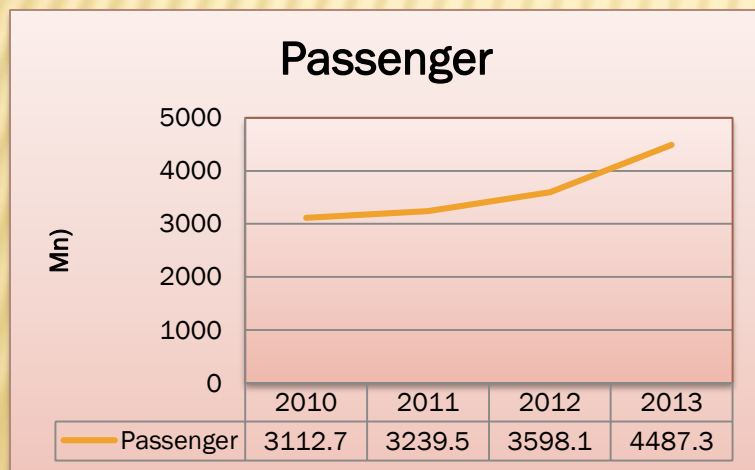
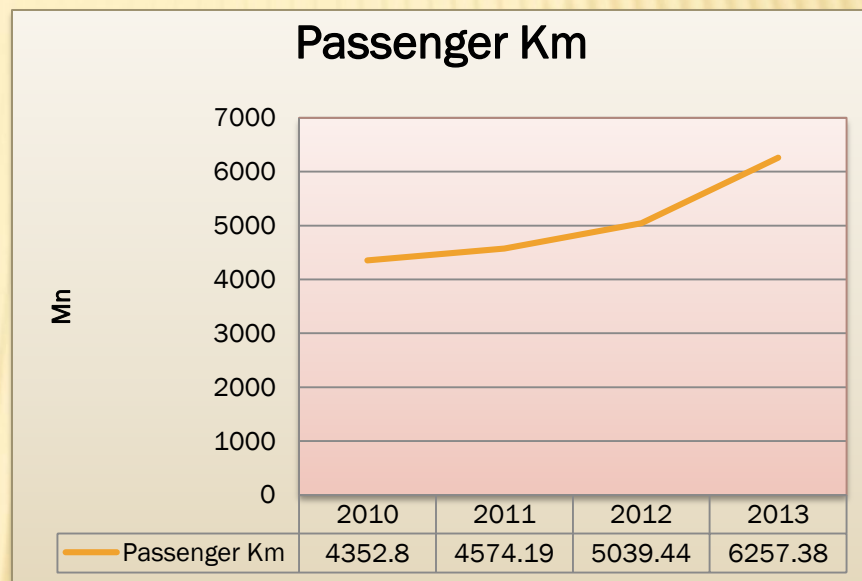
# NUMBER OF EMPLOYEES, STATIONS

Description	Nos.
<b>Employees</b>	
Permanent	12,883
Casual	3,583
<b>Total</b>	<b>16,466</b>
<b>Stations</b>	
Main Station	160
Sub Station	149
<b>Total</b>	<b>309</b>



# ANNUAL PASSENGER TRANSPORT

Description	Nos (Mn) (2013)
Number of Passengers	118.70
Passenger Km	6257.37





# NUMBER OF ROLLING STOCKS

DESCRIPTION	NOS
Locomotives	95
Power Sets	74
Carriages	740
Wagons	819



# TRAIN OPERATING – RAIL NET WORK

N o.	Line	KM
01	Main Line	291
02	Mat ale` Line	34
03	Puttalam Line	120
04	Kelanively line	59
05	Batticaloa Line	212
06	Northern Line	339
07	Trincomalee line	70
08	Coastal Line	161
09	Thalai mannar line	106
10	Mihintala Line	14
	Total Track Length	1449
	<b>Average Number of Daily Train runs</b>	<b>350-360</b>





# SHARE OF THE DOMESTIC RAILWAY

- ✘ Share of the Domestic Railway- 100%
- ✘ Share of Domestic passenger transport – 6%



预览已结束，完整报告链接和二维码如下：

[https://www.yunbaogao.cn/report/index/report?reportId=5\\_4846](https://www.yunbaogao.cn/report/index/report?reportId=5_4846)

