

# Critical Issues to consider

Srinivas Tata  
*ESCAP*

---

# Issues and challenges

---

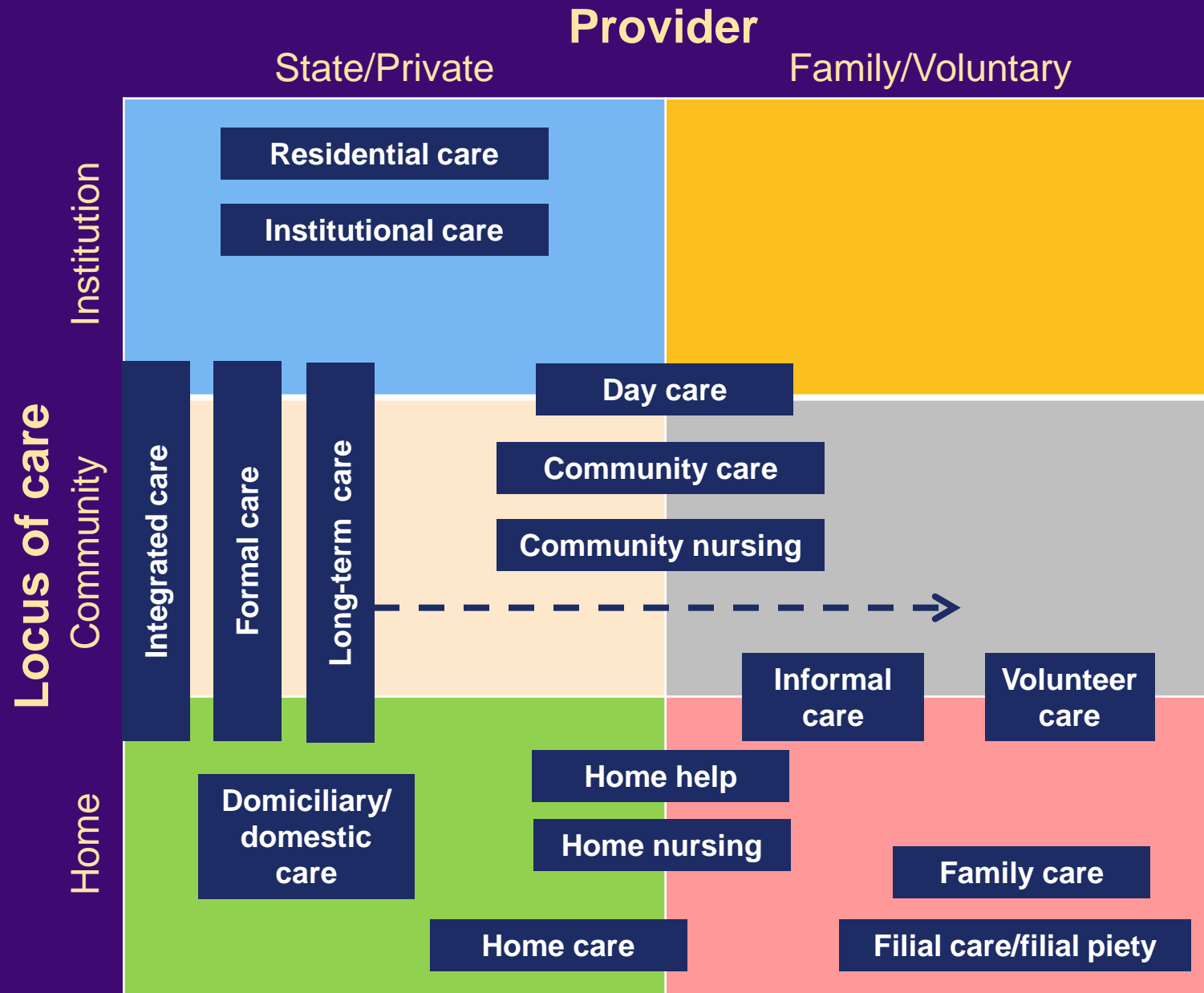
- Terms and nomenclature
- Addressing diverse needs of countries
- Role of stakeholders
- Financing
- Human resources
- Technology
- Data and evidence for policy

# Terms and nomenclature

---

- Long term care
- Institutional care
- Social Care
- Community care
- Home-based or Home care
- Family care
- Self care
- Continuum of Care

# Typology of care (adapted from Helpage)



# Diversity of countries

---

- Countries well into process of ageing where LTC is central e.g. Japan and RoK
- Countries which have rapidly ageing such as China, Thailand and Viet Nam
- Countries with low proportion but large number of older persons in absolute terms i.e. India, Indonesia
- High income vs Middle income solutions
- Interregional learning

# Role of stakeholders

---

- Government
  - Central, provincial and local
  - Policy and provider
- Family
- Community
- CSOs
- Older persons
- International community

# Financing

---

- Tax-based
- LTC insurance
- Philanthropic
- Private Sector
- Older persons savings
- Family

预览已结束，完整报告链接和二维码如下：

[https://www.yunbaogao.cn/report/index/report?reportId=5\\_4373](https://www.yunbaogao.cn/report/index/report?reportId=5_4373)

