

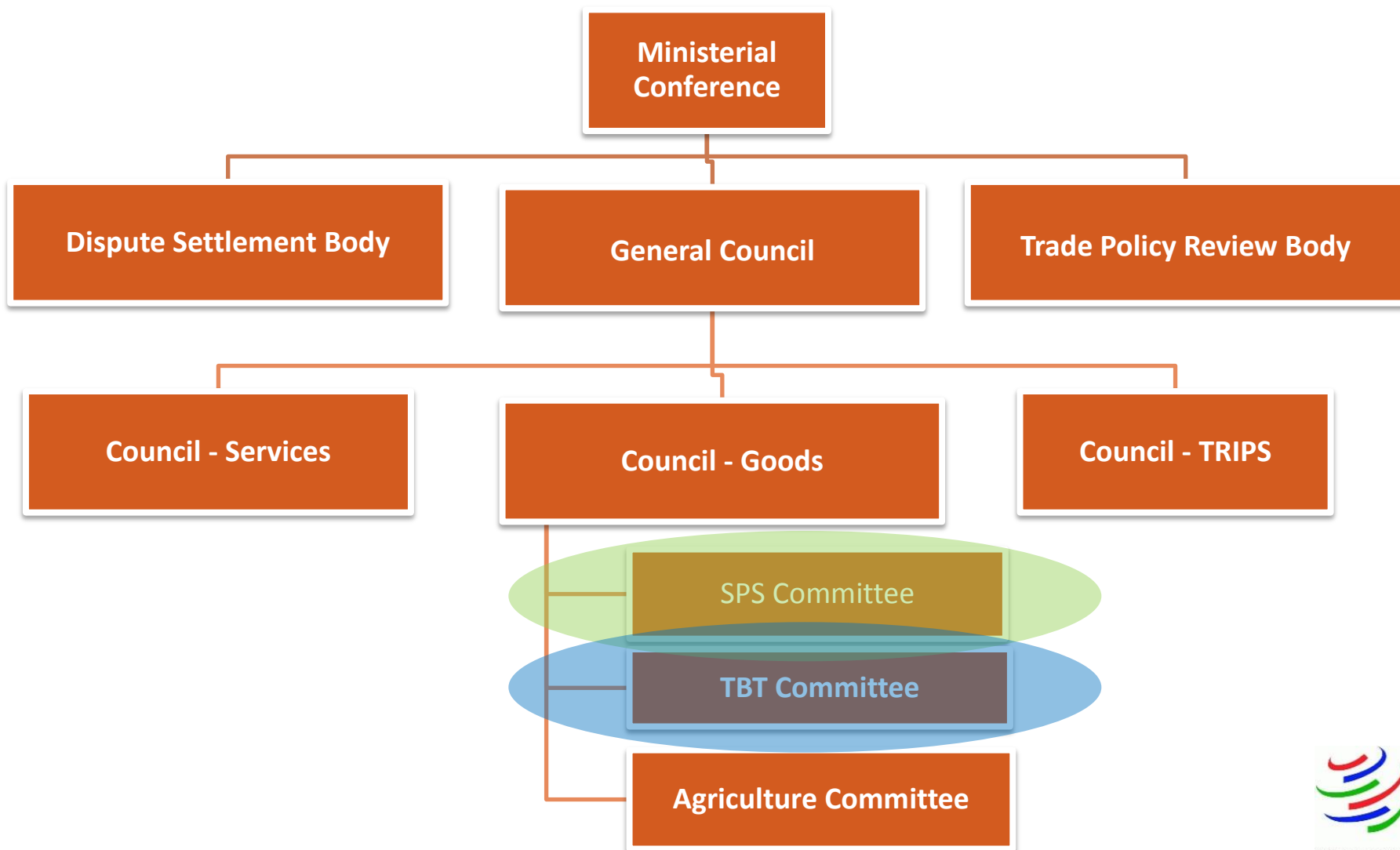
Functions and Procedures of the SPS and TBT Committees



Serra Ayrar and Gretchen H. Stanton
World Trade Organization



WTO: The Structure





Card 1: SPS Committee

Who is on it?

1a The SPS Committee is open to:
participation by agricultural producer and exporter
associations, industry representatives, and the general
public can participate as observers

1b The SPS Committee is open to:
WTO Members, observer governments and observer
international intergovernmental organizations



Card 1: SPS Committee

Who is on it?

1B

- All 161 WTO Members
- Observer governments (acceding members)
- Intergovernmental organizations

4 new WTO Members in 2012:

Montenegro, Russia, Samoa, Vanuatu

2 new WTO Members in 2013:

Lao PDR, Tajikistan

1 new WTO Member in 2014: Yemen

1 new WTO Member in 2015: Seychelles





Card 1: SPS Committee

Who is on it?

1B

SPS Committee

Observers:

- Codex, IPPC and OIE
- FAO, WHO, UNCTAD, World Bank, IMF, ITC, ISO

Ad hoc Observers:

- ACP Group, AU, CEN-SAD, COMESA, ECCAS, ECOWAS, EFTA, GSO, IGAD, IICA, OECD, OIRSA, SADC, WAEMU

Pending requests:

- Asian Pacific Coconut Community, CABI, CBD, CITES, ICCO, International Vine and Wine Office (OIV)



TBT Committee

Observers

- ACP Group, Codex, IEC, IMF, FAO, ISO, ITC, OECD, OIE, UNCTAD, UNECE, WHO, World Bank

Ad hoc Observers:

- ALADI, ARSO, BIPM, EFTA, GSO, IGAD, OIML, SADC, ITU, UNIDO

Pending requests:

- CITES, CBD, GOIC, IAF/ILAC, OIV



Card 2: SPS Committee Meetings

Standing Agenda Items

2a The SPS committee only considers issues
specifically mentioned in the SPS Agreement

2b The SPS Committee can consider
any issue raised by Members
that is included on the agreed agenda



Card 2: SPS Committee Meetings

Standing Agenda Items

SPS Committee

2B

- Activities of Members
- Specific trade concerns
- Transparency
- Special and differential treatment
- Equivalence
- Pest- or disease-free areas
- Technical assistance



预览已结束，完整报告链接和二维码如下：

https://www.yunbaogao.cn/report/index/report?reportId=5_3863

