



Geographical Indications:

Experiences in Peru

Diego Llosa



ARTNeTonline



@ARTNeTtrade

www.artnetontrade.org

Outline

1. Peru at a glance
2. Geographical Indication framework
3. Peruvian Appellations of Origin
4. Conclusions and challenges

Peru at a glance

Peru?



Machu Picchu



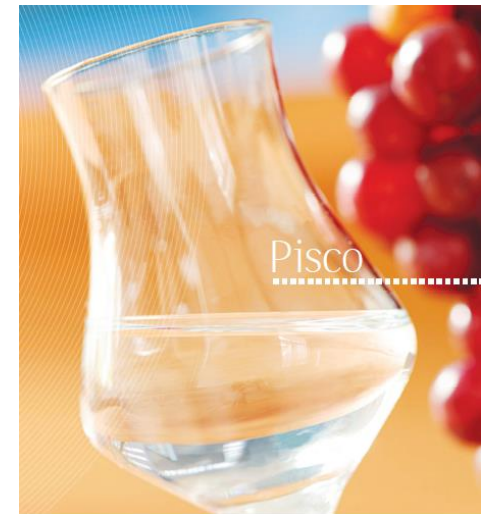
Ceviche



Llamas



The Incas



Pisco

Peru at a glance

Elevation:
0-6768 masl



AMAZON RAINFOREST:

Hot, tropical weather with plenty of rain.



HIGHLANDS:

Dry and temperate weather with huge variations in temperature during the day.

COAST:

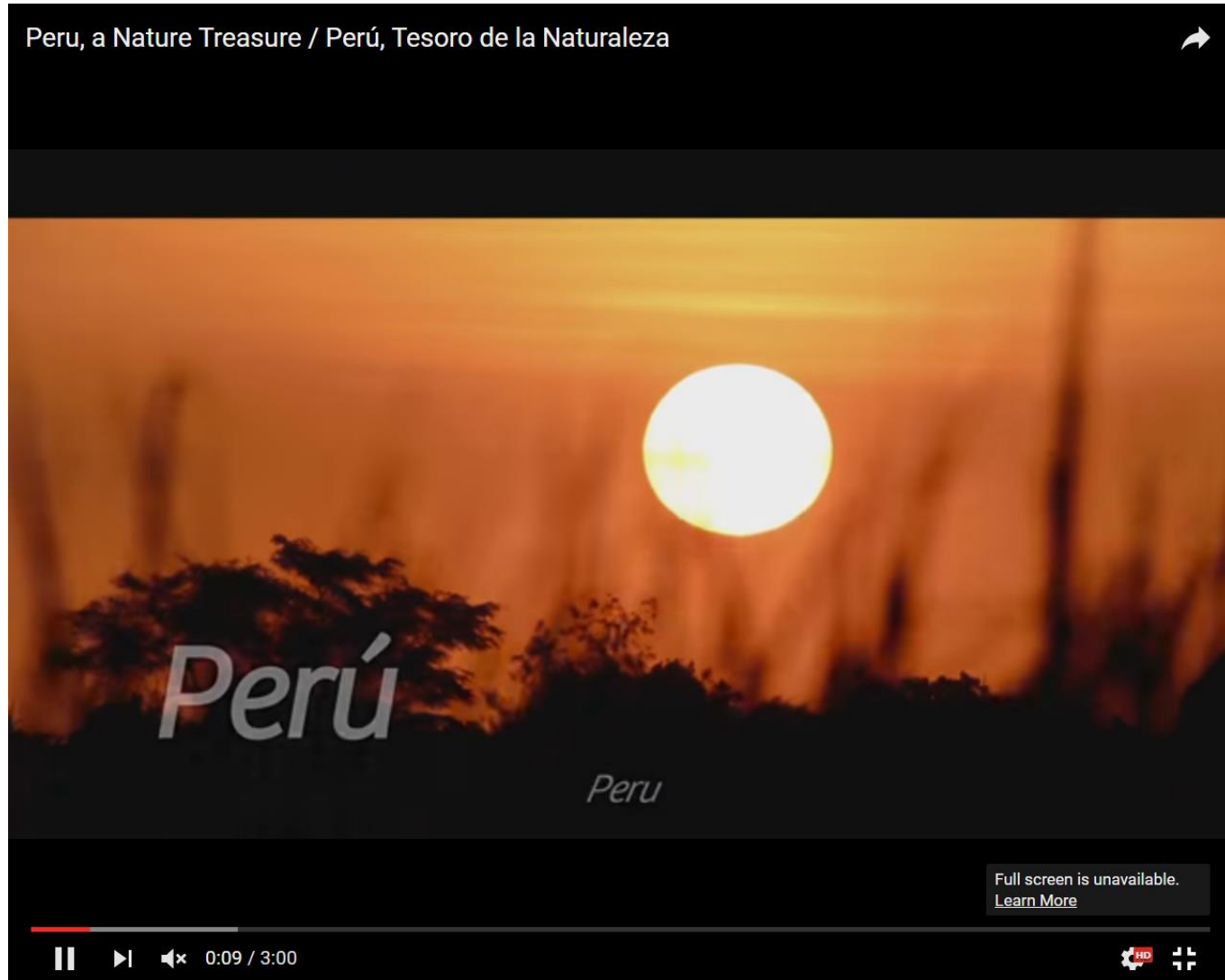
Northern section: Sunny all yearround. Central and southern section: Temperate, region with no rain, yet humid with plenty of cloud water.



Peru at a glance: Basic indicators

	2015
Population	31.2 million
Ethnic groups	Amerindian (45%), mestizo (37%), white (15%), African, Japanese, Chinese and other (3%)
Languages	Spanish, Quechua, Aymara, other native languages
Real GDP Growth	3.3%
GDP per capita (current)	US\$ 6147
Income level	Upper middle
Human Development Index	Position 84 (High Human Development)
Poverty rate	21.8%
Exports of G&S (% GDP)	21%
Imports of G&S (% GDP)	23.6%
Exports by commodity group	Fuels and mining (63%), agricultural (15%), manufacture (15%), fishing (7%)
Exports by main destination	China (22%), UE (16%), USA (14.9%), Switzerland (8.1%), Canada (6.9%)

Video



Source: PROMPERU

Geographical Indications Framework

预览已结束，完整报告链接和二维码如下：

https://www.yunbaogao.cn/report/index/report?reportId=5_3024

