



# MERCURY POISONING:

---

## CLINICAL SIGNS AND SYMPTOMS

DR UZMA ALI  
MBBS , FCPS  
ASSOCIATE DERMATOLOGIST  
CAPITAL HOSPITAL , ISLAMABAD

# Introduction

---

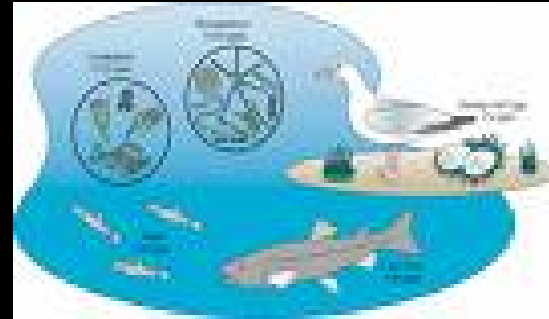
- Only metal in liquid state at room temperature.
- Toxic to humans in both liquid and vaporized state.



# HUMAN EXPOSURE

---

- Aquatic food chain



- Fungicides used on seeds



## Human exposure.....contd

---

- **Inhalation** ---- from working environment

Burning waste

Burning coal in power plants

Industries:

Chlor alkali

Cathodes in distilleries

Making of scientific instruments

Hat , Fur , Felt industry



## Human exposure .....contd

---

- **Dentistry**--- amalgams



- Drinking water & atmosphere---min
- **Broken** fluorescent **bulbs** & **thermometers**
- Skin whitening **creams**
- **Thiomersal**---preservative in **vaccines** ( still used in flu tetanus & other non-childhood vaccines in U.S)

# Human screening tests for mercury

---

## 1. URINE TEST :

24 hr collection better than spot test

normal value---- less than 5ugm/g of creatinine

occupational limit----less than 35ug/g creatinine

## 2. BLOOD TEST:

normal value----less than 8ug/L

occupational limit-----less than 15ug/L

## Human Screening.....contd

---

### 3. HAIR ASSAY:

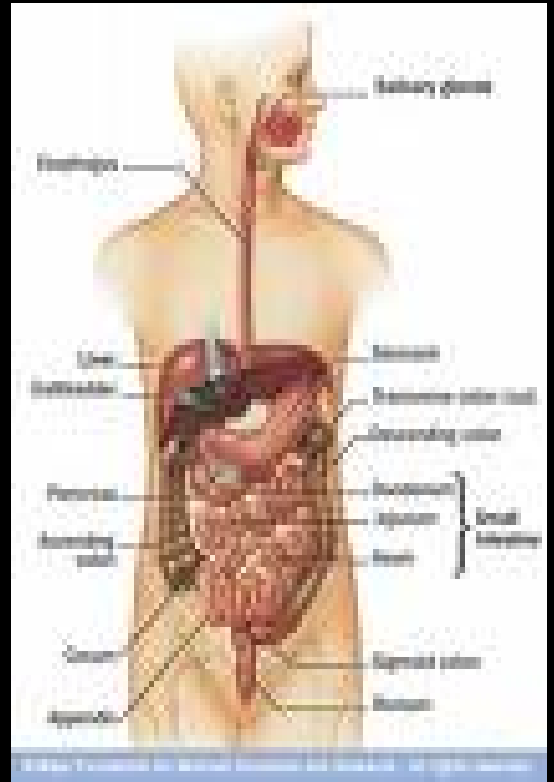
Most reliable if properly performed

Normal value-----less than 15 ug /g

# PHARMACOKINETICS

## Mercury

absorption  
gut.



预览已结束，完整报告链接和二维码如下：

[https://www.yunbaogao.cn/report/index/report?reportId=5\\_14119](https://www.yunbaogao.cn/report/index/report?reportId=5_14119)

