

MAP-X

The next transparency revolution
in the extractive industries

Mapping and Assessing the Performance of Extractive Industries

01



EXTRACTIVE INDUSTRIES

03



ABOUT MAP-X

05



MAP-X COMPONENTS

06



DIFFERENT SCALES OF MAP-X

07



KEY FUNCTIONALITIES

14



POTENTIAL BENEFITS



Extractive Industries: Expectations and Challenges

Extractive resources such as oil, gas, minerals and timber can have a transformative impact on the development trajectory of a country. They can create jobs, generate revenue to fund basic government services and stimulate further economic growth. However, harnessing these opportunities presents numerous challenges and pitfalls. This is especially the case in countries affected by fragility, conflict and violence.

In too many cases, the extractives sector in fragile states is plagued by decades of opaque contracts, backroom deals and decisions taken without public consultation or dialogue with local communities. As a result, stakeholder trust breaks down, benefits are not shared equitably, and there is little public access to authoritative information about the profits the sector is generating, the development gains it is catalysing or the risks it is causing. When expectations are not met, social grievances and conflict are a common result.

Fortunately, significant progress is being made towards improving the governance of the sector. Hard fought battles have been won through initiatives such as the Extractive Industries Transparency Initiative (EITI) over contract disclosure, revenue payments, beneficial ownership, and production information. These are important steps

forward to inform decision-making, strengthen benefit sharing, and meet public expectations.

However, current transparency initiatives need to be taken forward to enable data to be published in an open and easily accessible format. The vast amount of information being generated needs to be unlocked and made available in formats that everyone can use. It must be interoperable and have the ability to speak to other geospatial data sets.

In addition, stakeholders can benefit from access to not only financial information, but data relating to social and environmental benefits and risks of concern to local communities. The public is interested in companies' compliance with contractual obligations, whether benefit-sharing agreements are honoured, how individual sites are performing and what environmental risks exist. The range of transparency information can also be presented in more compelling visual and interactive formats that support dialogue and decision-making.

Overcoming these shortfalls will help stakeholders to use extractives data to inform public debate, build confidence, attract new investments and improve the development impact of the sector.



Many communities and other stakeholders in the extractives sector are demanding transparency and access to authoritative information on a range of economic, social and environmental issues.

OGONILAND, NIGERIA



Capitalizing on the potential benefits from the extractive industries also requires monitoring key social and environmental risks to prevent conflicts.

OGONILAND, NIGERIA

What is MAP-X?

MAP-X is an answer to some of these challenges. Born out of a request by the g7+ group of conflict-affected states, the open data platform 'Mapping and Assessing the Performance of Extractive Industries', or MAP-X, aims to:

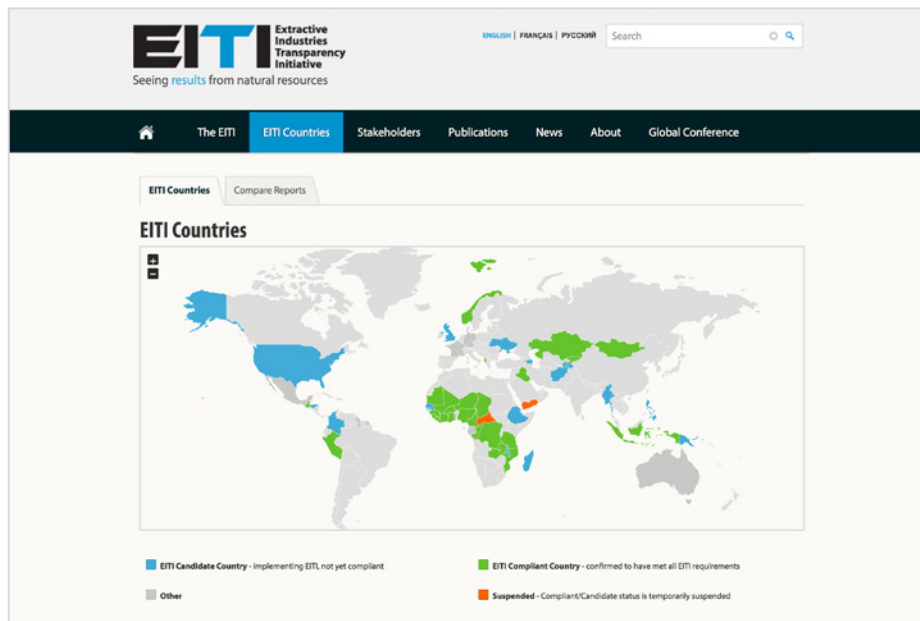
- Transform transparency information into an open data and interoperable format that is easy to access by all stakeholders in a visually intuitive platform;
- Provide a one-stop shop for stakeholders to access authoritative data on the extractive sector and other contextual information;
- Facilitate community engagement in the award and renewal of concessions;
- Help stakeholders monitor compliance and performance of individual concessions across the extractive industry value chain using economic, social and financial criteria.

MAP-X is being developed in close cooperation with the Extractive Industries Transparency Initiative (EITI). Countries in compliance with EITI or in the process of adopting the EITI standard could

use MAP-X as a transparency and open data tool linking both concession information and financial data to other types of social, environmental, land use and operational data. MAP-X could also help EITI countries to achieve compliance with the EITI requirement 6.2, which encourages countries to publish their data in a format that is machine-readable and can be compared with other publically available data.

The key long-term beneficiaries of MAP-X are local authorities and communities, national ministries, and extractive companies in countries with governments seeking to build an extractive sector based on inclusiveness, authoritative data, transparency and stakeholder dialogue. Ultimately, MAP-X is a tool to build confidence between stakeholders in the extractive sector that should help share and maximize benefits for peacebuilding and sustainable development.

The MAP-X prototype is currently being tested in the Democratic Republic of Congo and Afghanistan. Prototype development is being funded by the UNEP Partnership Trust Fund, the UN-World Bank Fragility and Conflict Partnership Trust Fund and the government of Finland.



MAP-X could help countries to achieve compliance with the EITI requirement 6.2, which encourages countries to publish their data in a format that is machine-readable and can be compared with other publicly available data.



MAP-X could help stakeholders monitor the compliance and performance of individual concessions across the entire extractive industry value chain.

TONKOLILI DISTRICT,
SIERRA LEONE

MAP-X Components

Open data platform:

MAP-X will offer a national open data platform for visualizing extractives sector data that can be tailor-made to local needs, is owned by stakeholders, and supported by UNEP and the World Bank. MAP-X is a tool that can reinforce the implementation of national transparency commitments, such as those under EITI as well as National Action Plans of the Open Government Partnership.

Normative data standard and workflow:

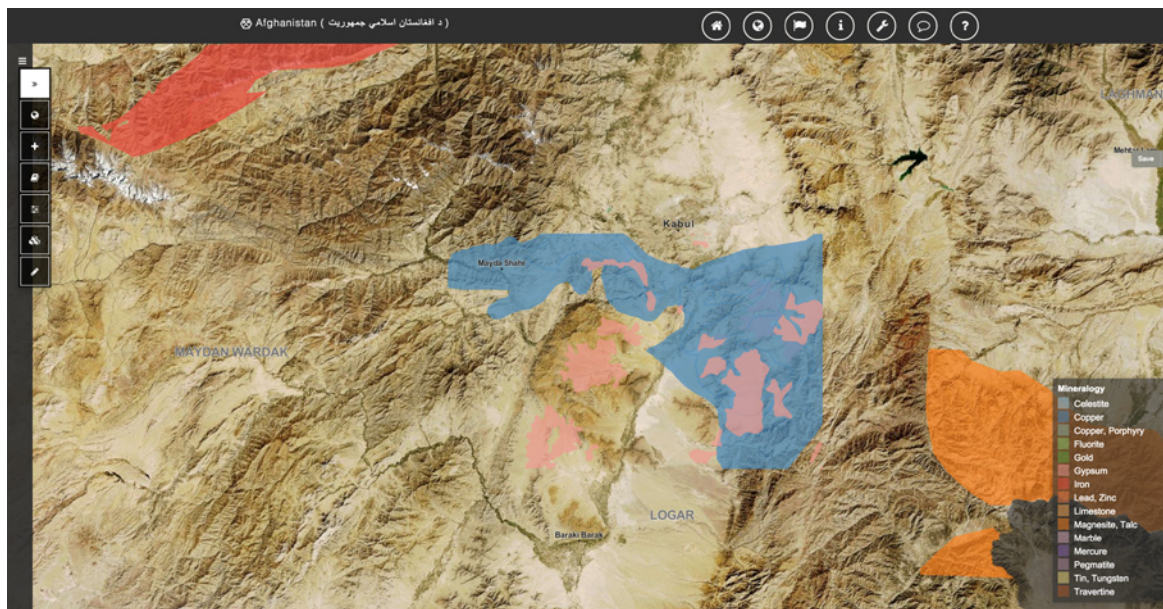
MAP-X will support data suppliers and other stakeholders in consolidating, validating, reconciling and licensing the data and making it avail-

able in standardized open data formats. This will ensure that different data sets can be integrated together, and support quality control by ensuring that all the data fed into the system is accurate, authorized, validated and interoperable.

Stakeholder capacity building:

MAP-X will offer a capacity building programme for stakeholders to comply with the standard, manage the workflow and use the open data platform to inform decision-making. This will ensure a bottom-up approach and strengthen the national ownership of the platform for it to become a key information and monitoring tool adapted to conflict-affected contexts.

MAP-X will offer an open data platform for extractive information, plus a normative data standard and a capacity building programme. Here depicted: mineralogy around Kabul, Afghanistan.



Different Scales of MAP-X

Given recent advances in information technology and communications, the MAP-X initiative is being designed to function at three different scales and be accessible by either web connected computers or mobile smart phones.

Local level:

Stakeholders will be provided a range of tools to access the operational requirements of individual concessions in order to monitor their compliance and performance throughout the value chain. This will cover financial, social and environmental aspects using a score card system.

National level:

The platform will permit open access to authoritative information on all extractive industry concessions, including ownership, duration, resource type, and payments. It will support strategic planning and investments by providing other important contextual data layers, as well as help identify key risks and potential development impacts.

Global level:

Data from country platforms can also be aggregated to the global level as a basis for comparative analysis and tracking the performance of individual companies and beneficial owners.

MAP-X will integrate information at the local, national and global scales.

WESTERN AREA
PENINSULA,
SIERRA LEONE



2011 © Tommy Trenchard/ UNEP

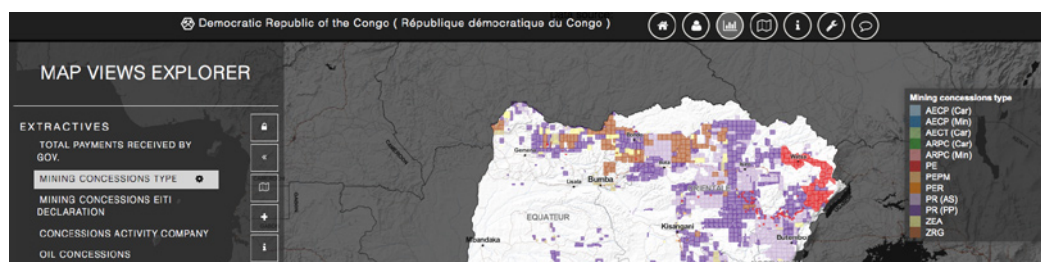
Key MAP-X Functionalities

The key functionalities of the MAP-X prototype are presented here through the national pilot platform developed for the Democratic Republic of the Congo. It should be noted that as the prototype development and data collection are ongoing, some of the data presented here may not reflect the latest available information.

Mapping Concessions by Type or Activity Status

To date, much of the concession-specific data remains locked down in static PDF files, such as annual EITI reports, closed databases and outdated software that do not inform real-time decision-making and do not effectively reduce information asymmetries among different ministries and stakeholders. In a single click, MAP-X can provide information on all resource concessions either by type, activity status, date of issue, or owner. Each concession can be queried for immediate access to further information. MAP-X also includes a time slider function to visualise changes in these variables over time.

Stakeholders can access resource concession information by type, activity status, date of issue or owner. Here depicted: mining concessions



预览已结束，完整报告链接和二维码如下：

https://www.yunbaogao.cn/report/index/report?reportId=5_13077

