

The Canary Current Large Marine Ecosystem Project

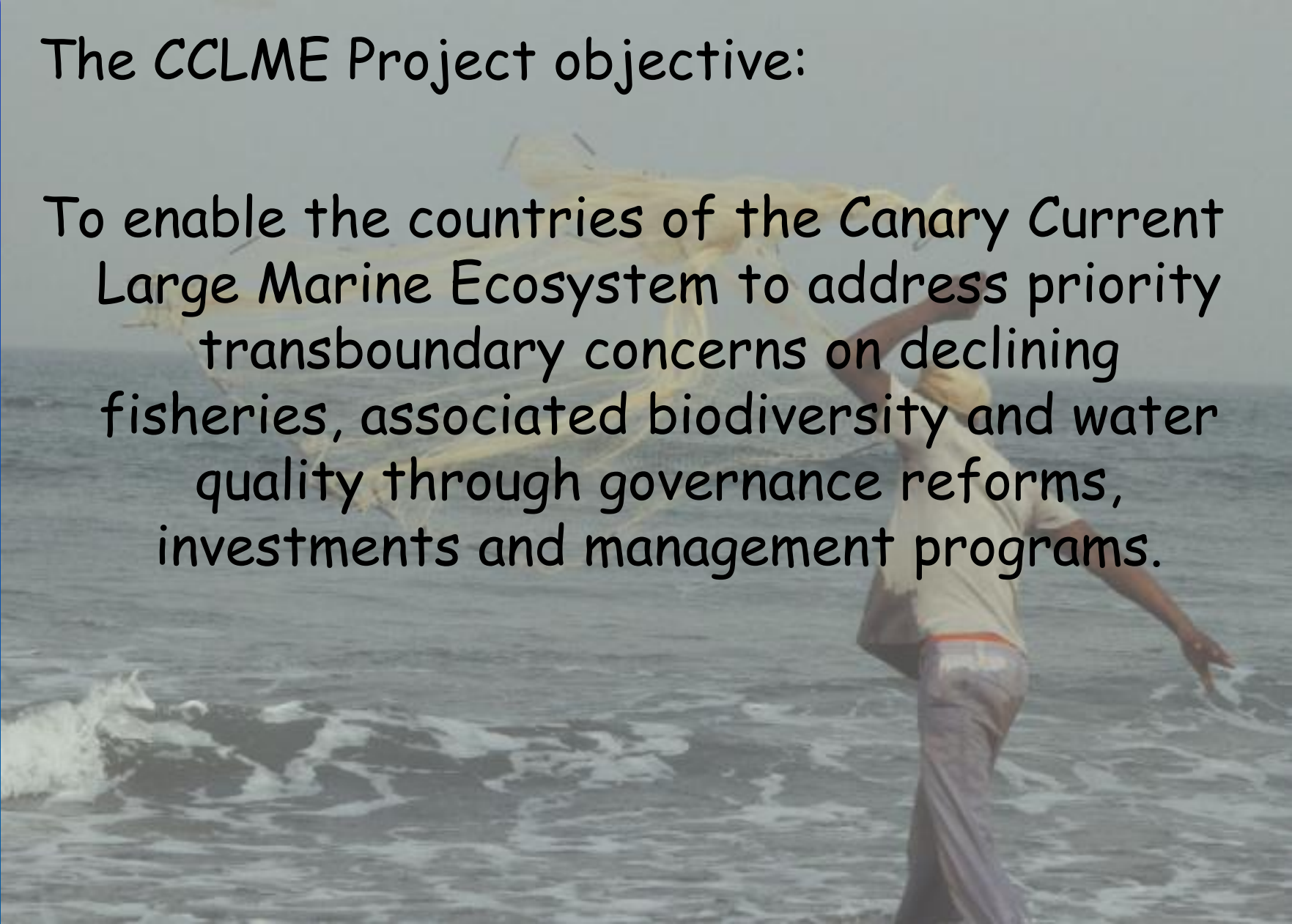
2010 - 2016 (1st phase)

FAO / UNEP / GEF



The CCLME Project objective:

To enable the countries of the Canary Current Large Marine Ecosystem to address priority transboundary concerns on declining fisheries, associated biodiversity and water quality through governance reforms, investments and management programs.



The Canary Current Large Marine Ecosystem

Morocco

Mauritania

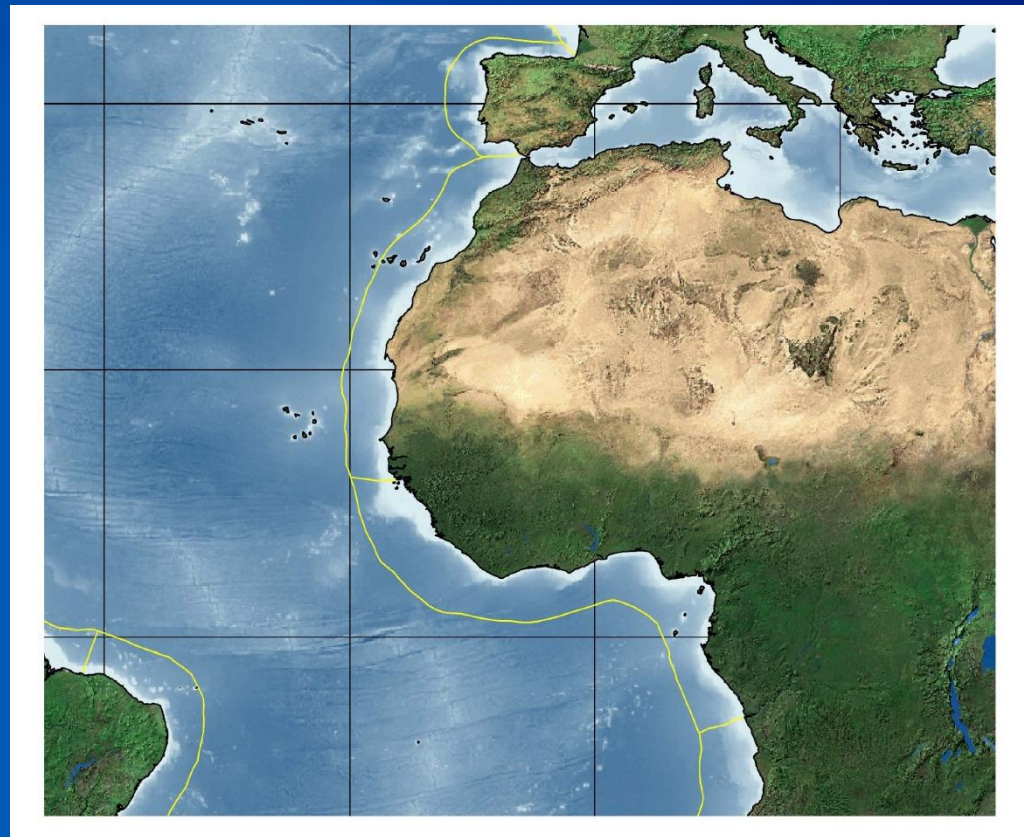
Cape Verde

Senegal

Gambia

Guinea

Guinea-Bissau



Some project info:

- Project period: 2010-2016 (1st phase)
- Regional Coordinating Unit (RCU) based in Dakar, Senegal
- Funding partners: GEF, participating countries, FAO, UNEP, PRCM, AFD, Norway, Holland, NOAA
- Project partners: Countries, funding partners, CSRP, CECAF, Abidjan Convention, FAO and UNEP

Thematic project components:

Component 1. "Process"

Component 2. "Marine fisheries"

Component 3. "Biodiversity, habitat and water quality"

- Five demonstration projects to test ways of addressing key transboundary concerns
- Working groups on key thematic areas
 - Ecosystem surveys (collaboration EAF-Nansen)

Demonstration projects in the areas of:

- Transboundary management of shared small pelagic stocks
- By-catch reduction in coastal shrimp trawling
- Transboundary co-management of migratory coastal species
- MPAs for fisheries
- Regional mangrove conservation

- **Working groups**
 - State of stocks (CECAF WG groups)
 - Survey data analysis and planning
 - Biodiversity, habitat and water quality
 - Climate change
 - TDA and SAP

预览已结束，完整报告链接和二维码如下：

https://www.yunbaogao.cn/report/index/report?reportId=5_12427

