

## DEFINITION & CLASSIFICATION



The UNECE standard applies to inshell walnuts\* free from outer husks, of varieties (cultivars) grown from *Juglans regia* L., intended for direct consumption or for food when intended to be mixed with other products for direct consumption without further processing.

It does not apply to inshell walnuts that are processed by salting, sugaring, flavouring, roasting or for industrial processing.

Inshell walnuts are classified into the following **three classes: Extra Class, Class I and Class II.**

**The classification is determined in accordance with the defects allowed in the Standard's section "IV, Provisions concerning tolerances".**

## QUALITY DEFECTS



FREE OF BLEMISHES



MOULD ON SHELL



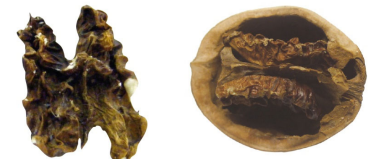
DAMAGED BY PESTS



DAMAGE ON SHELL



DAMAGED SHELL, EXPOSED  
KERNEL



NOT SUFFICIENTLY DEVELOPED



INTACT SHELL



BLEMISHES AND DISCOLOURATION



MOULD ON KERNEL



INSECT DAMAGE



ADHERING HULL / HUSK



MEASURING STAINS

# 我们的产品



## 大数据平台

国内宏观经济数据库

国际经济合作数据库

行业分析数据库

## 条约法规平台

国际条约数据库

国外法规数据库

## 即时信息平台

新闻媒体即时分析

社交媒体即时分析

## 云报告平台

国内研究报告

国际研究报告

预览已结束，完整报告链接和二维码如下：

[https://www.yunbaogao.cn/report/index/report?reportId=5\\_937](https://www.yunbaogao.cn/report/index/report?reportId=5_937)

