

---

## GOVERNMENT NOTICE

---

### DEPARTMENT OF TRANSPORT

No. 301

24 March 2009

### DEPARTMENT OF TRANSPORT

## THE SOUTH AFRICAN NATIONAL ROADS AGENCY LIMITED

Registration No: 98/09584/06

---

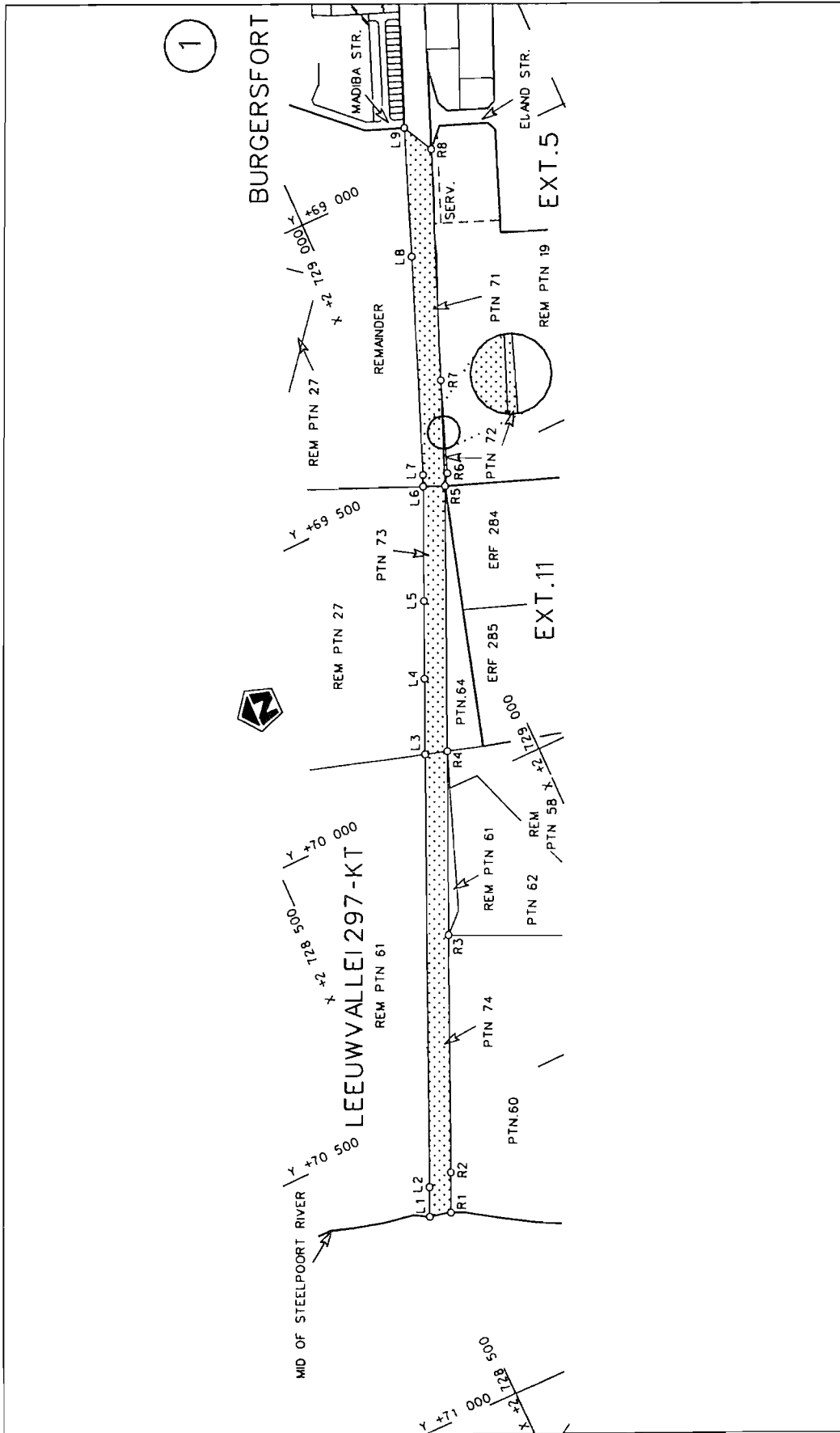
### DECLARATION AMENDMENT OF NATIONAL ROAD R37 PART OF SECTION 1 AND SECTION 2

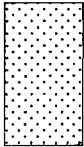
AMENDMENT OF DECLARATION No. 727 OF 2005

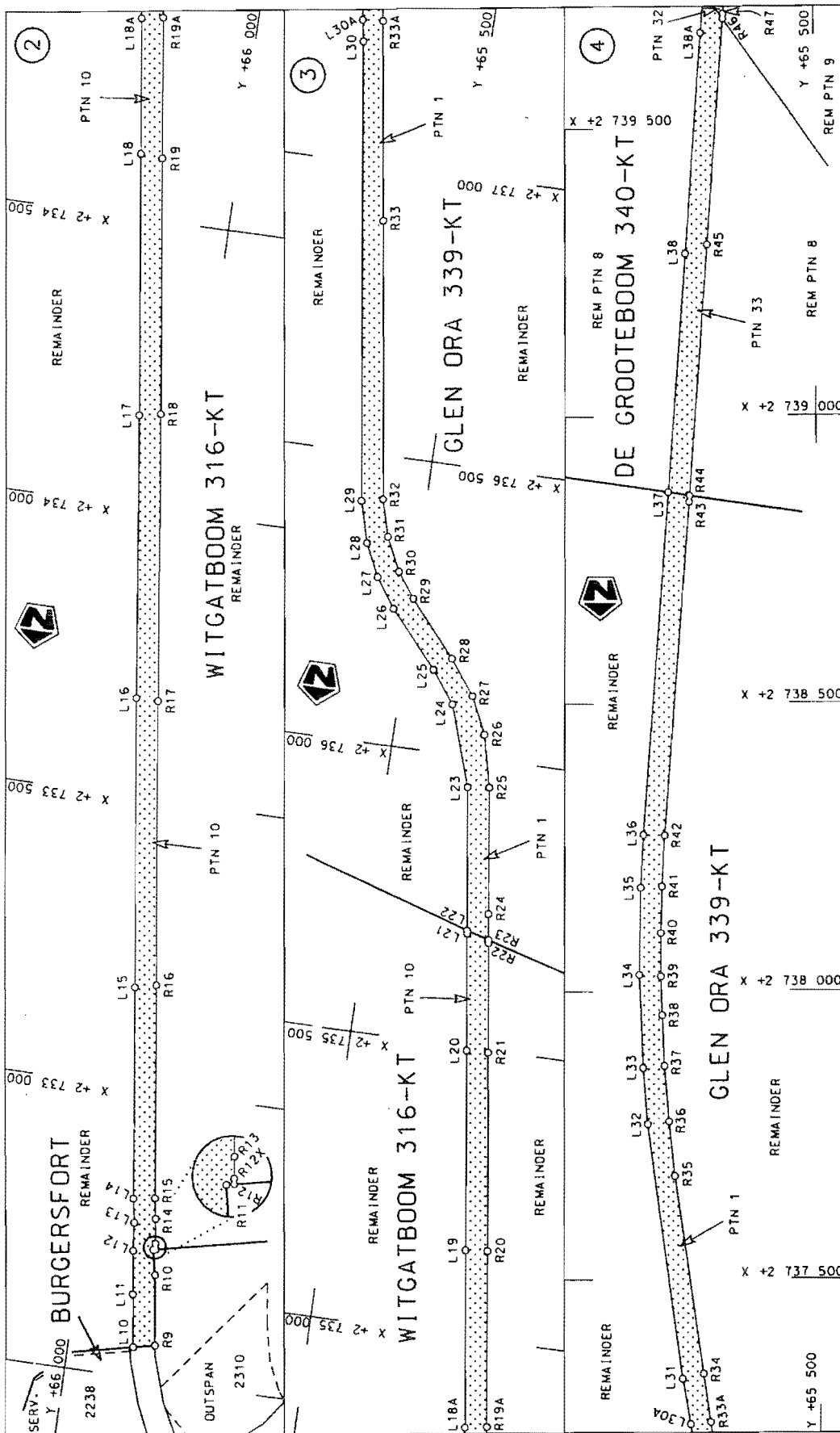
By virtue of section 40 (1)(b) of the South African National Roads Agency Limited and the National Roads Act, 1998 (Act No. 7 of 1998), I hereby amend Declaration No. 727 of 2005 by substituting Annexure paragraph (I), with the subjoined sheets 1 to 20 of Plan No.P699/08.

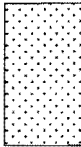
(National Road R37 Part of Section 1 and Section 2: Steelpoort River -Lydenburg)

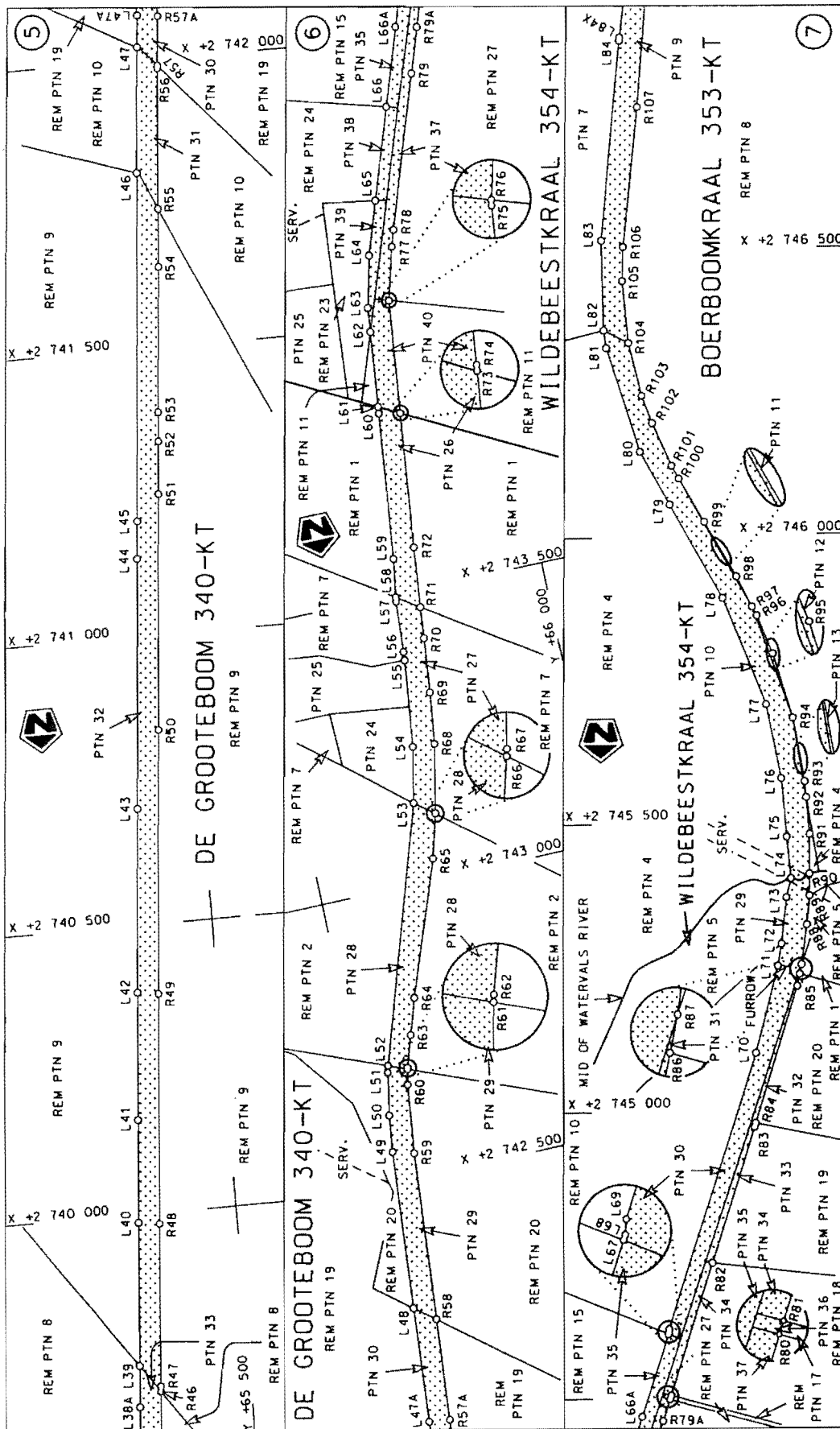
  
\_\_\_\_\_  
MINISTER OF TRANSPORT



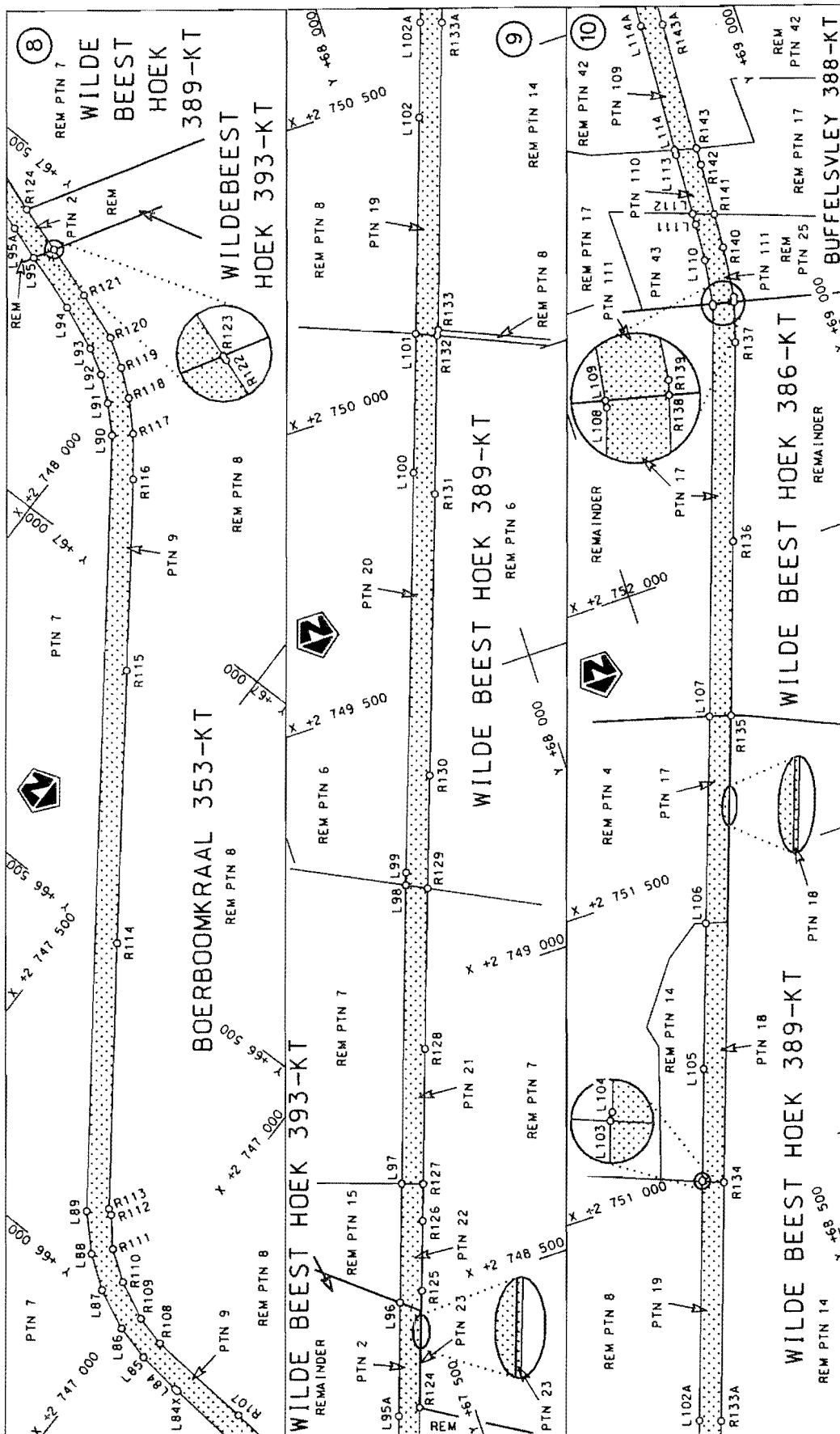
<p>Die Suid Afrikaanse Nasionale Padagentskap Beperk The South African National Roads Agency Limited</p>	<p>Die figuur getoon The figure shown</p>  <p>stel die padreserwe voor van 'n gedeelte represents the road reserve of a portion van Nasionale Roete R37 Seksie of National Route R37 Section</p>	<p>Vel Sheet 1 van 20 Plan P699/08</p>
--	---	--



Die Suid Afrikaanse Nasionale Padagentskap Bepark The South African National Roads Agency Limited	Die figuur getoon The figure shown		stedie podreserwe voor van 'n gedeelte represents the road reserve of a portion van Nasionale Roete R37 of National Route Section	Vel Sheet 2 of 20
				Plan P699/08



Die Suid Afrikaanse Nasionale Padagentskap Beperk The South African National Roads Agency Limited	Die figuur getoon The figure shown	steldie padreserwe voor van 'n gedeelte represents the road reserve of a portion van Nasionale Roete R37 of National Route	Vel Sheet	van of	20
			Plan	P699/08	



<p>Die Suid Afrikaanse Nasionale Padagentskap Beperk The South African National Roads Agency Limited</p>	<p>Die figuur getoon The figure shown</p>	<p>stelt die padreserwe voor van 'n gedeelte represents the road reserve of a portion von Nasionale Roete R37 of National Route</p>	<p>Plan P699/08 Section 2 Vel Sheet 4 of 20</p>
--	---	---	---