

---

## GOVERNMENT NOTICE

---

### DEPARTMENT OF TRANSPORT

No. 304

25 March 2009

## THE SOUTH AFRICAN NATIONAL ROADS AGENCY LIMITED

Registration No: 98/09584/06

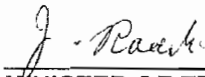
---

### DECLARATION AMENDMENT OF NATIONAL ROAD N12 SECTION 10

AMENDMENT OF DECLARATION No. 631OF 2005

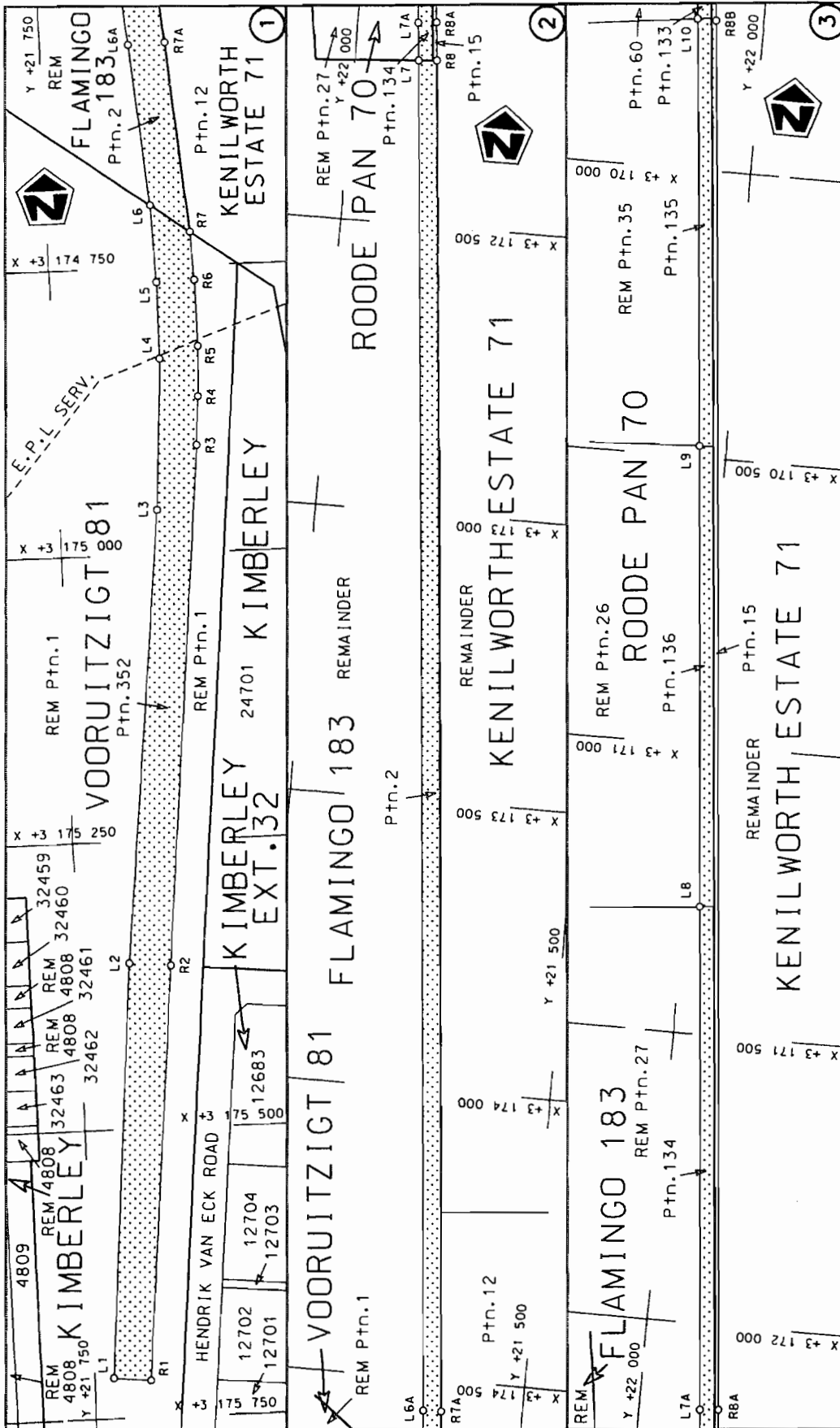
By virtue of section 40 (1)(b) of the South African National Roads Agency Limited and the National Roads Act, 1998 (Act No. 7 of 1998), I hereby amend Declaration No. 631 of 2005, by substituting the descriptive section of the route from Kimberly up to the Northern Cape/North West Provincial Border, with the subjoined sheets 1 to 18 of Plan P611/07.

(National Road N12 Section 10: Kimberly – Northern Cape/North West Provincial Border)

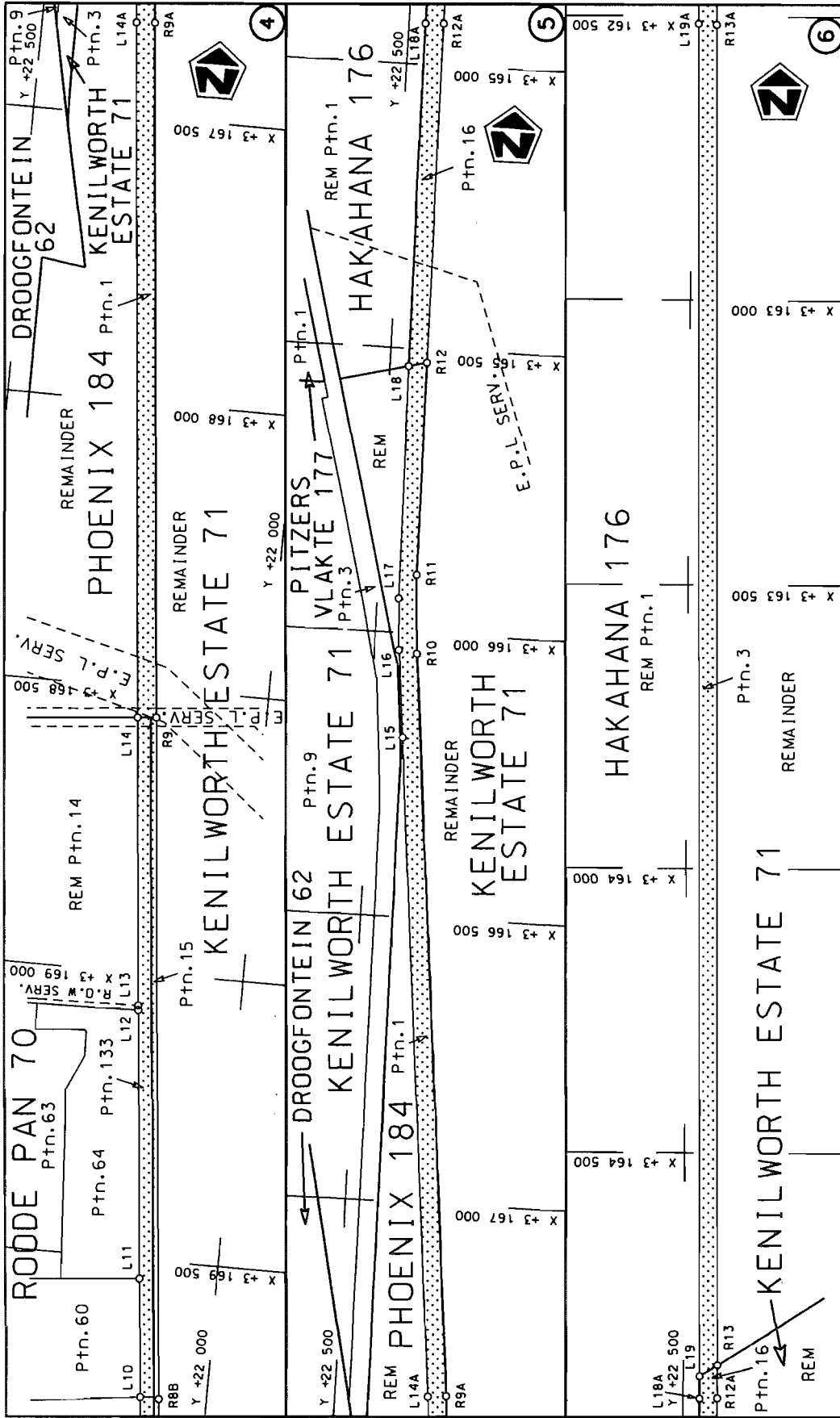


---

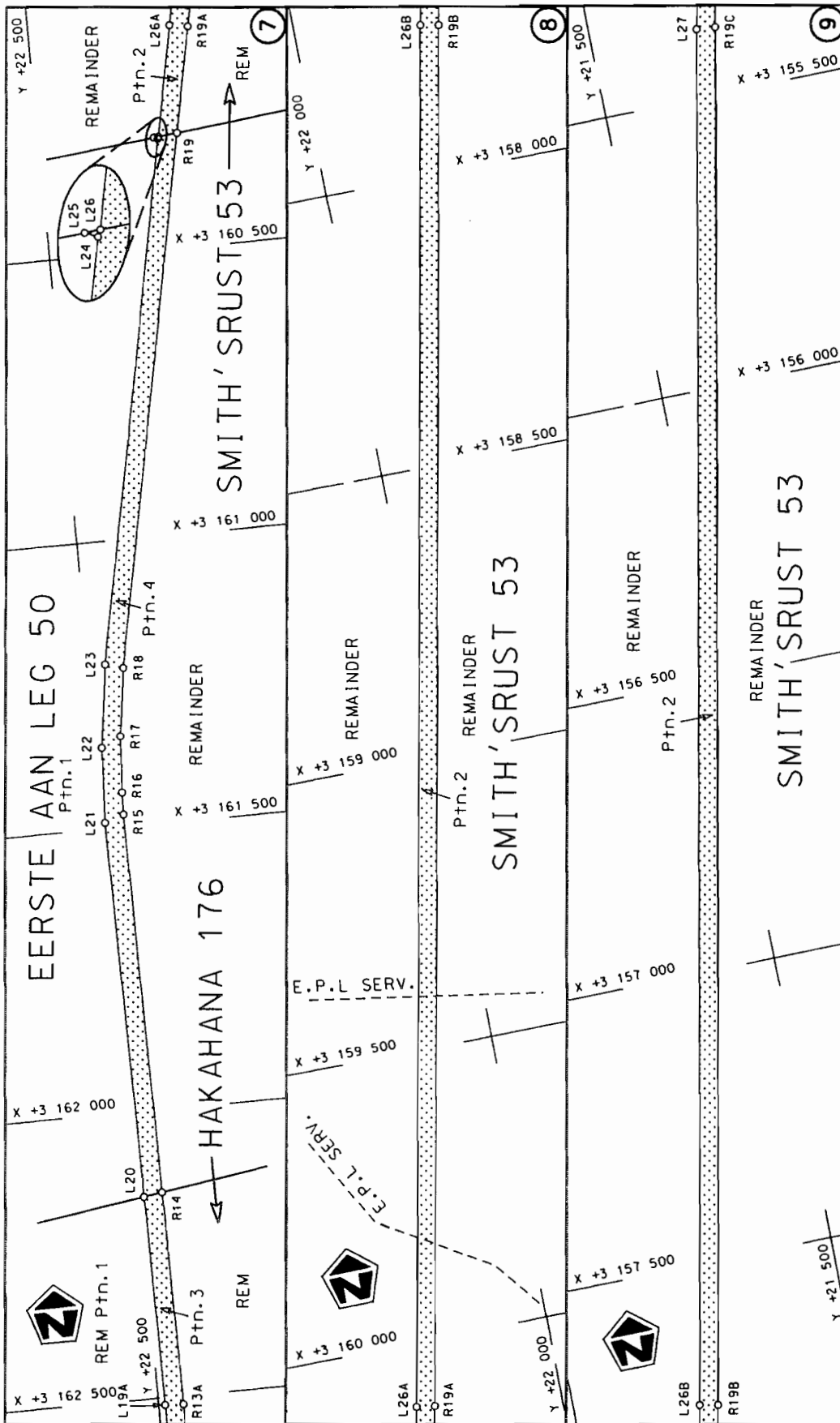
MINISTER OF TRANSPORT



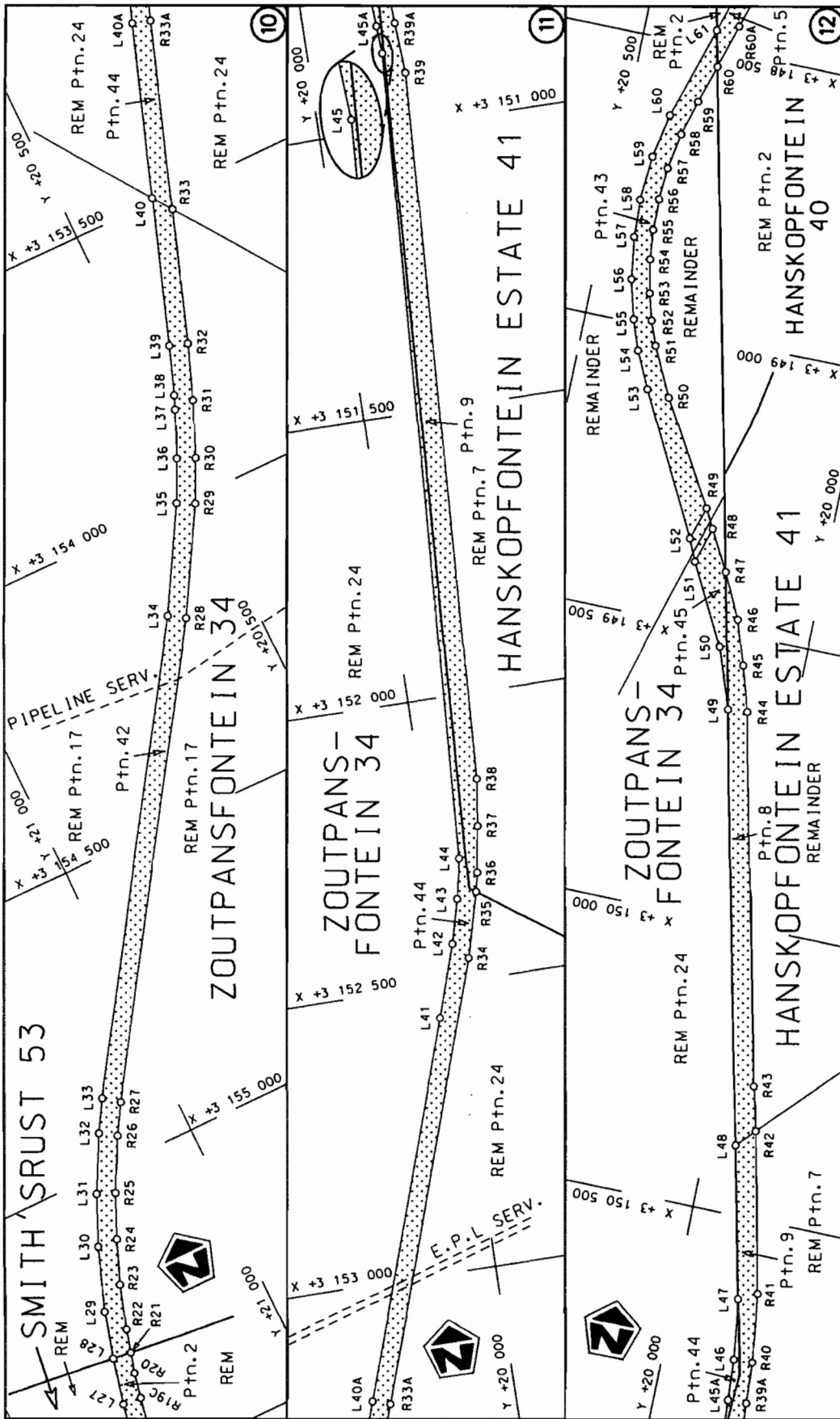
<p>Die Suid Afrikaanse Nasionale Padogenskop Beperk The South African National Roads Agency Limited</p>	<p>Die figuur getoon The figure shown</p>	<p>steeldie podreserwe voor von 'n gedeelte represents the rood reserve of a portion von Nasionale Roete N12 of National Route</p>	<p>10</p>	<p>Plan P611/07</p>
<p>Vel Sheet 1 of 18</p>		<p>Section</p>		



Die Suid Afrikaanse Nasionale Padagentskap Beperk The South African National Roads Agency Limited	Die figuur getoon The figure shown		stelede padreserwe voor van 'n gedeelte represents the road reserve of a portion von Nasionale Roete N12 of National Route Section	
			10	10
			Vel Sheet 2 of 18	von Plan P611/07



<p>Die Suid Afrikaanse Nasionale Padagentskap Beperk The South African National Roads Agency Limited</p>	<p>Die figuur getoon The figure shown</p>	<p>steldie podreserwe voor van 'n gedeelte represents the road reserve of a portion von Nasionale Roete N12 of National Route</p>	<p>Vel Sheet 3 of 18 Plan P611/07</p>
<p>Die figuur getoon The figure shown</p>		<p>steldie podreserwe voor van 'n gedeelte represents the road reserve of a portion von Nasionale Roete N12 of National Route</p>	<p>Vel Sheet 3 of 18 Plan P611/07</p>



<p>Die Suid Afrikaanse Nasionale Podogentskop Beperk The South African National Roads Agency Limited</p>	<p>Die figuur getoon The figure shown</p>	<p>steedie podreserwe voor van 'n gedeelte represents the road reserve of a portion van Nasionale Roete N12 of National Route</p>	<p>Vel Sheet 4 of 18 Plan P611/07</p>
--------------------------------------------------------------------------------------------------------------	-----------------------------------------------	-----------------------------------------------------------------------------------------------------------------------------------------------	-------------------------------------------

10